



Getting Started with AVSystem Coiote and nRF Cloud Location Services using LwM2M

World-class device management and location services

Marcin Nagy

Seppo Takalo

Bjørn Kvaale

Today's hosts

Marcin Nagy



Product Director IoT



Seppo Takalo



Senior R&D Engineer



Bjørn Kvaale

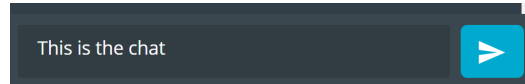
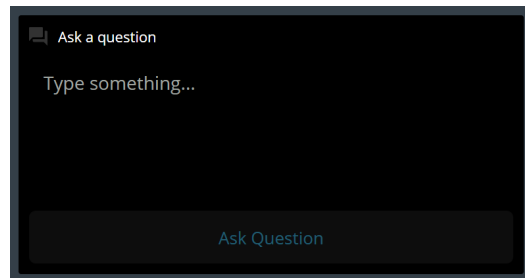


Product Marketing
Engineer



Practicalities

- Duration: 50-60 mins
- Questions are encouraged!
- Please type questions in the top of the right sidebar
 - All questions are anonymous
 - Try to keep them relevant to the topic
- We will answer questions towards the end
- The chat is not anonymous, and should **not** be used for questions
- If you have more questions:
 - Go to [DevZone](#) for Nordic related questions
- iot@avsystem.com or <https://discord.avsystem.com/>
- A recording of the webinar will be available together with the presentation at webinars.nordicsemi.com



{ DevZone

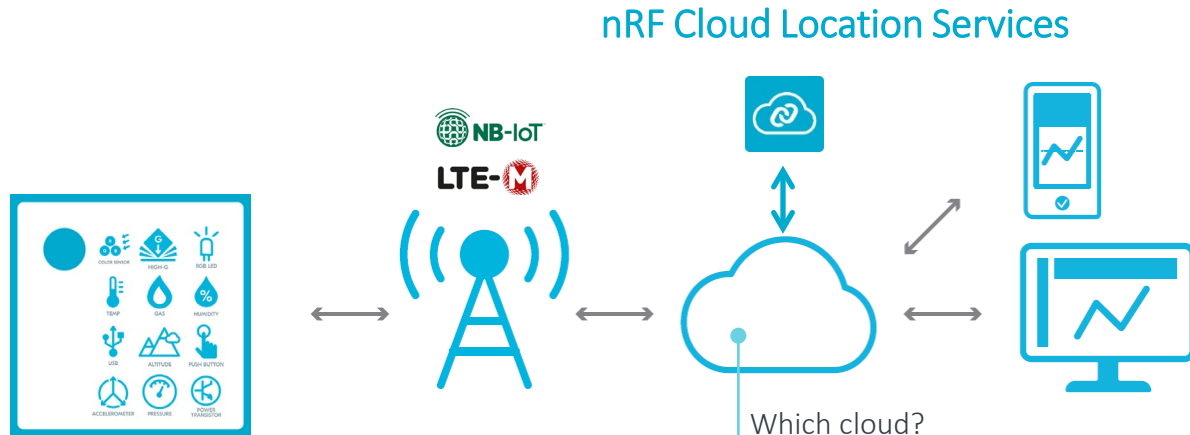
Abstract

- LwM2M for device-to-cloud connectivity
- Introduction to AVSystem
- Nordic and AVSystem benefits
- Getting Started: Connecting nRF9160 DK to AVSystem Coiote
- Q&A

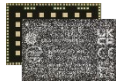
Introduction

LwM2M for device-to-cloud connectivity

Connecting your cellular device to the cloud



Your cellular IoT device with nRF9160



Which cloud?

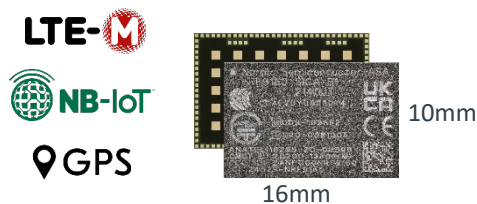
How to send data? Which protocol to use (TCP, UDP, etc)?

How to support FOTA – Fleet management?

How to get location services from nRF Cloud?

[Best Practices White Paper](#), [more info](#)

nRF9160 SiP



Ultra Low power & Small SiP

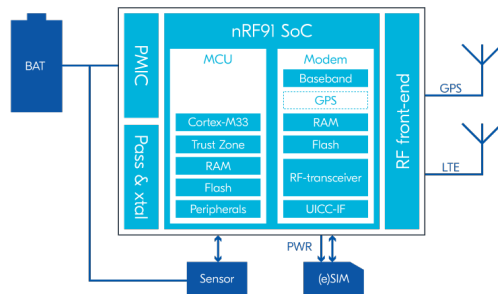
Pre-certified SiP

LTE-M, NB-IoT with GNSS

Multiband for global coverage

Advanced SiP technology

Enabling single chip solutions



High level of integration

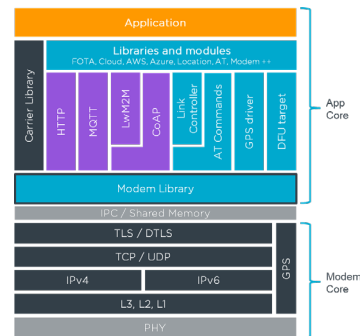
Nordic Dual Core SoC chipset:

app core: ARM Cortex M33 MCU

modem core: LTE-M, NB-IoT with GNSS

Includes PMIC, RF FEM, passives and crystals

nRF Connect SDK



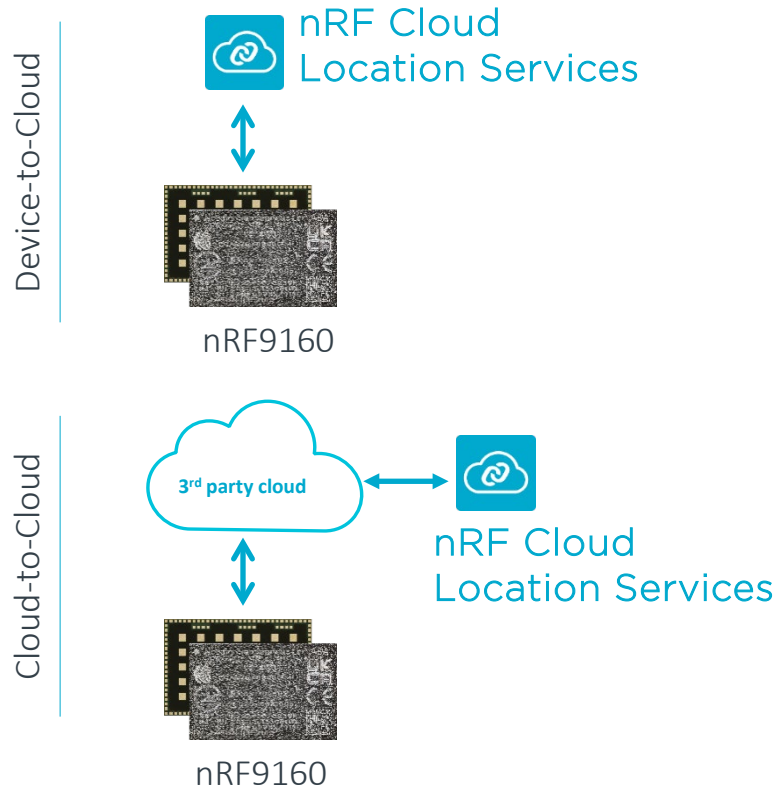
Easy to use and flexible

Modern and flexible nRF Connect SDK, supporting all clouds, with examples and tools

Seamless integration between App Core and Modem thanks to Modem Library

nRF Cloud Location Services

- Location Services offered as part of nRF Cloud
- Nordic has unique offering to help customers who need enhanced location solutions:
 - A-GPS, P-GPS, single-cell (SCELL), multi-cell (MCELL), Wi-Fi
 - Seamless integration for nRF9160
- Improve performances / power consumption
- Customers can use it in two ways:
 - Device-to-Cloud
 - Cloud-to-Cloud
- More info: www.nordicsemi.com/cloudservices



Introduction to AVSystem

Shaping the World of Connected Devices

AVSystem is a software provider specializing in solutions and services for device connectivity. **Leaders in IoT device management** and experts in affordable, secure, and energy-efficient large scale solutions.

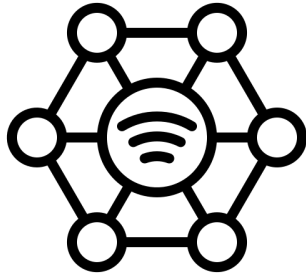
AVSystem in numbers:

- ❑ 80 million managed devices
- ❑ 60 countries
- ❑ 170+ customers worldwide
- ❑ 16+ years of experience
- ❑ 200+ software engineers
- ❑ 100% software development done in-house



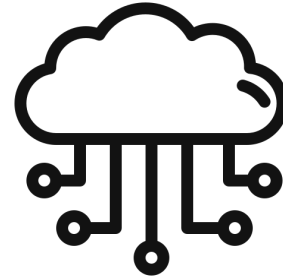
Attentive coexistence of human, environment
and technology.

IoT Products Portfolio



LwM2M Client

SDK - Anjay



Coiote IoT Device Management

Anjay & Coiote: value for customers

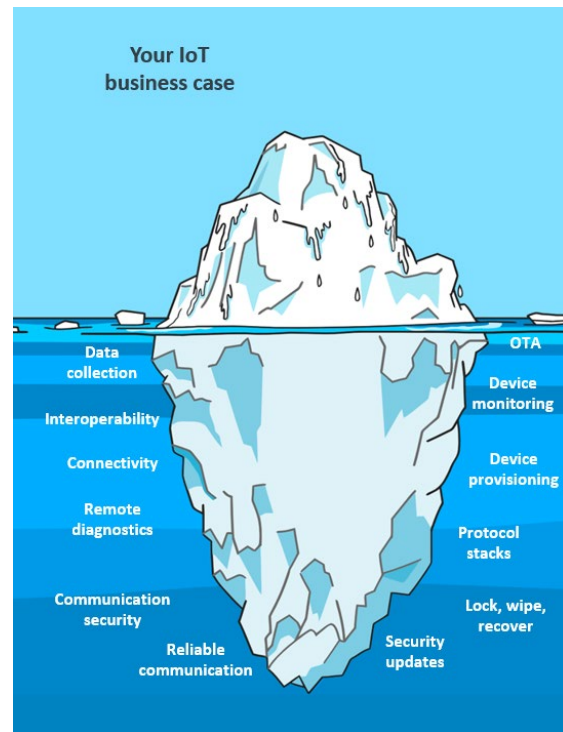
As a user, I **want** to focus on building my application.

I **don't want** to spend time implementing:

- Device provisioning mechanisms,
- OTA updates,
- Reliable device-to-cloud communication.
- ...

I want to save device battery; thus I'd like to avoid:

- Opening many connections to different cloud endpoints,
- Sending excessive amounts of data



Lightweight M2M (LwM2M): our cornerstone



Lower operational expenses
Low resources consumption



Reduced time-to-market
Well-defined data model



Security by design
(D)TLS, OSCORE included



Standard-based design
Device management
OTA updates
Data collection

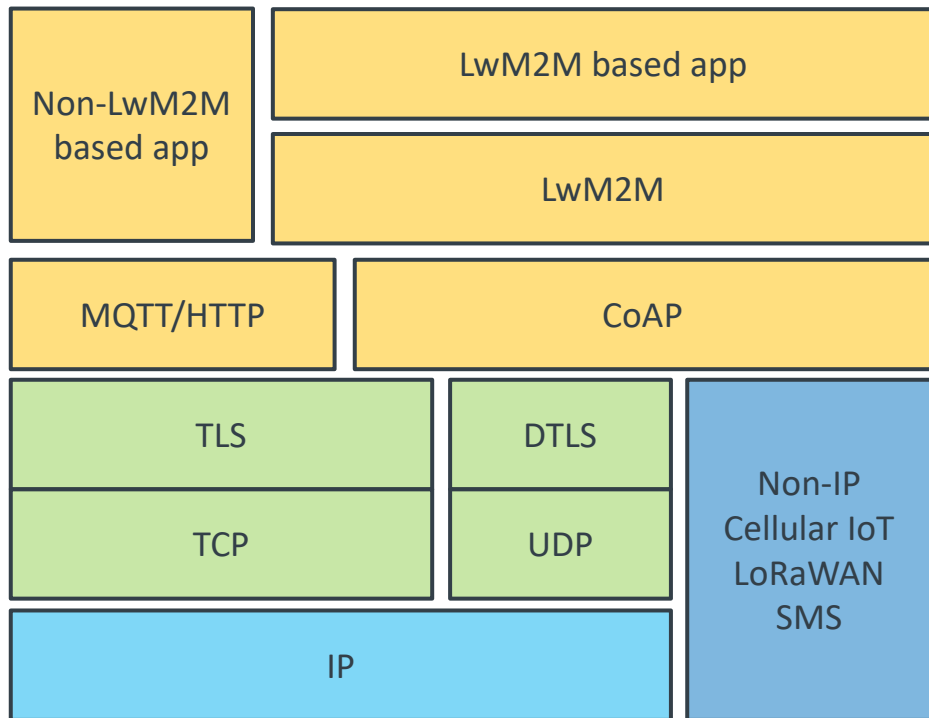


Sustainable solution
Longer battery lifetime
Less waste



Single-pane of glass
Agnostic transport layer

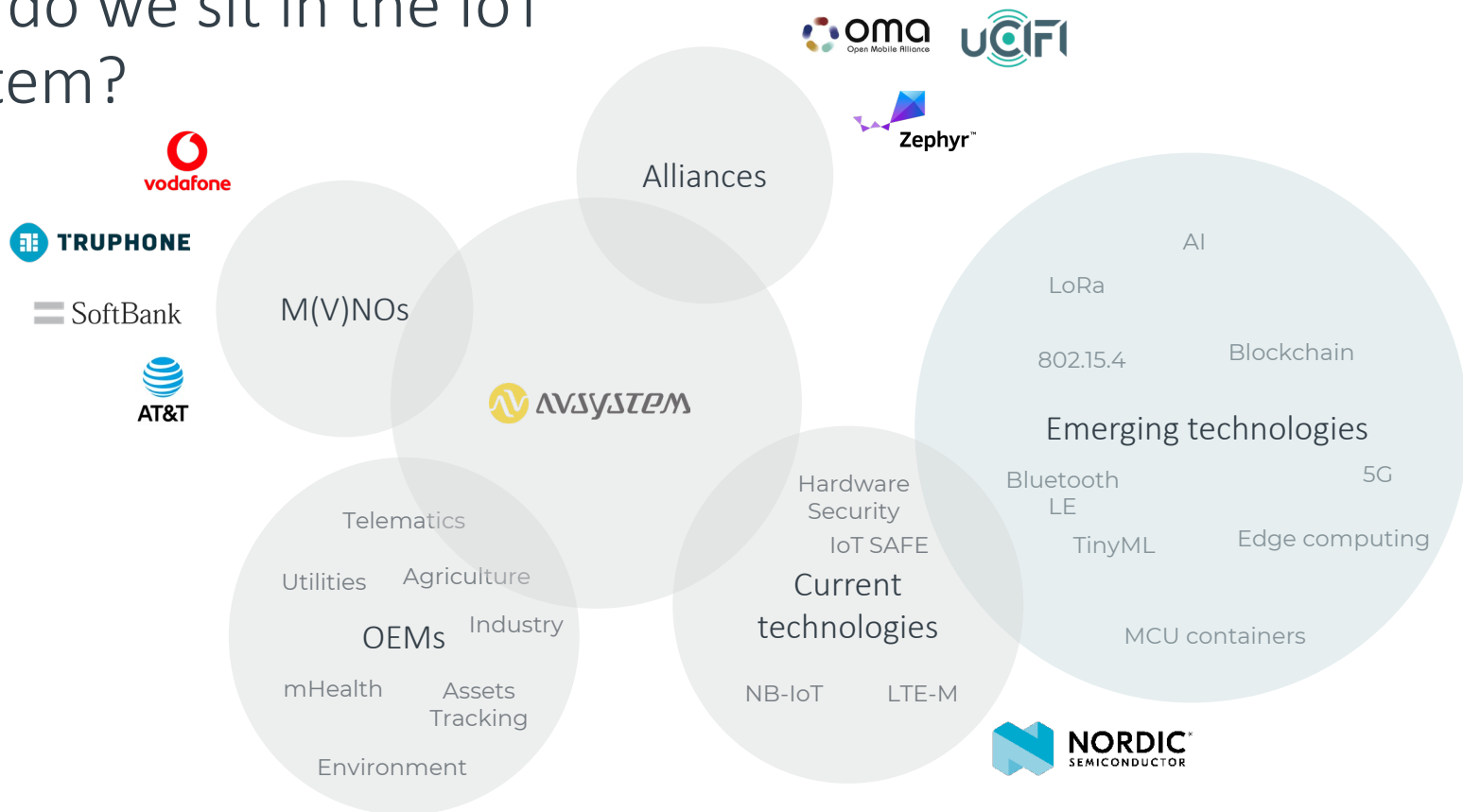
LwM2M: a deeper technical dive



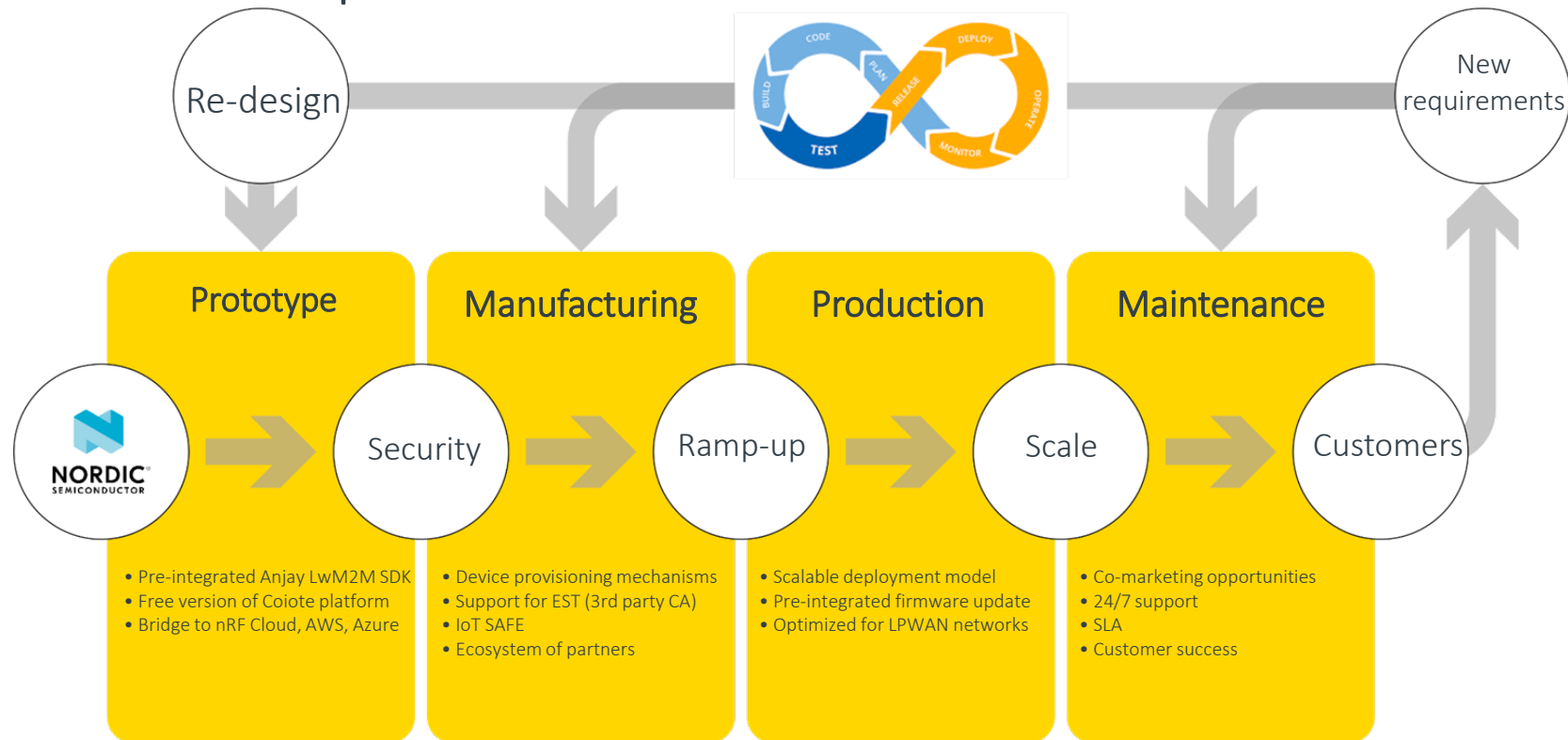
- Key features:
 - Well-defined data model
 - Device management & data collection
 - Security by design
 - Efficient communication & power consumption
 - Device provisioning by design
 - Bindings to non-IP networks

See [crash course](#) for more info

Where do we sit in the IoT ecosystem?

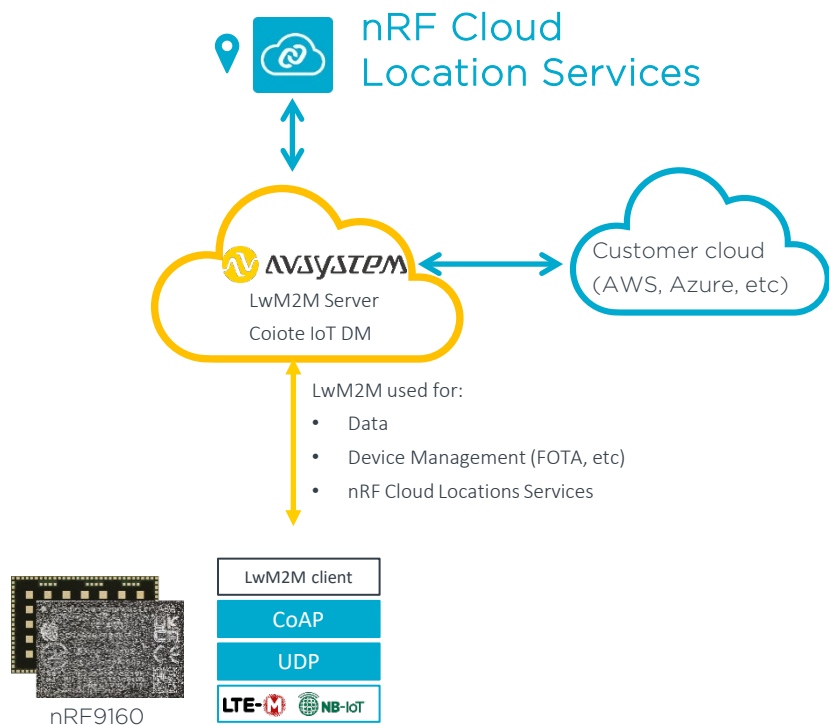


Enabler for rapid IoT success



Nordic and AVSystem Benefits

Nordic & AVSystem = Value for customers

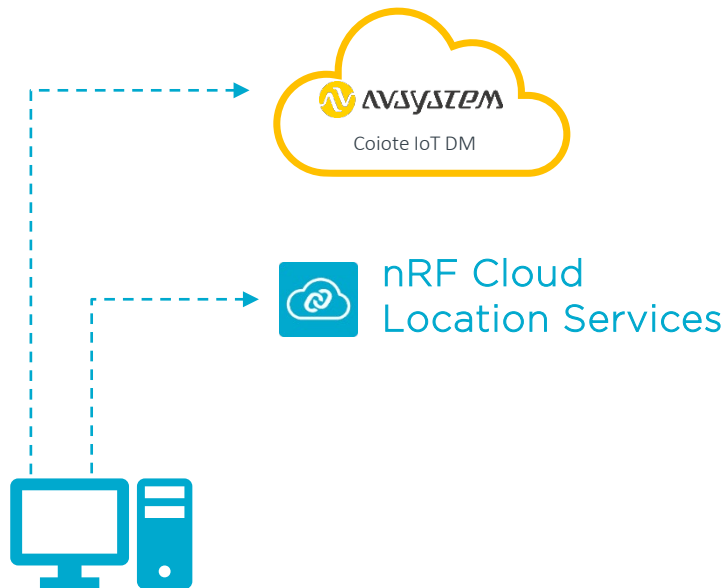


- AVSystem offers LwM2M solutions and it is Nordic Solution Partner
- Full LwM2M integration of nRF9160 with AVSystem Coiole IoT for Data, DM, Location Services
- Open Source LwM2M Clients:
 - Zephyr LwM2M stack (included in nRF Connect SDK, with Coiole IoT support)
 - AVSystem Anjay LwM2M Client (ported to nRF9160)
- Out of the box integration with nRF Cloud Location Services
- Free Development up to 10 devices
 - Self-service website sign-up registration
- Getting started guides, examples
 - See [partner page](#) for links and to get in touch

Getting Started: Connecting nRF9160 DK to AVSystem Coiote

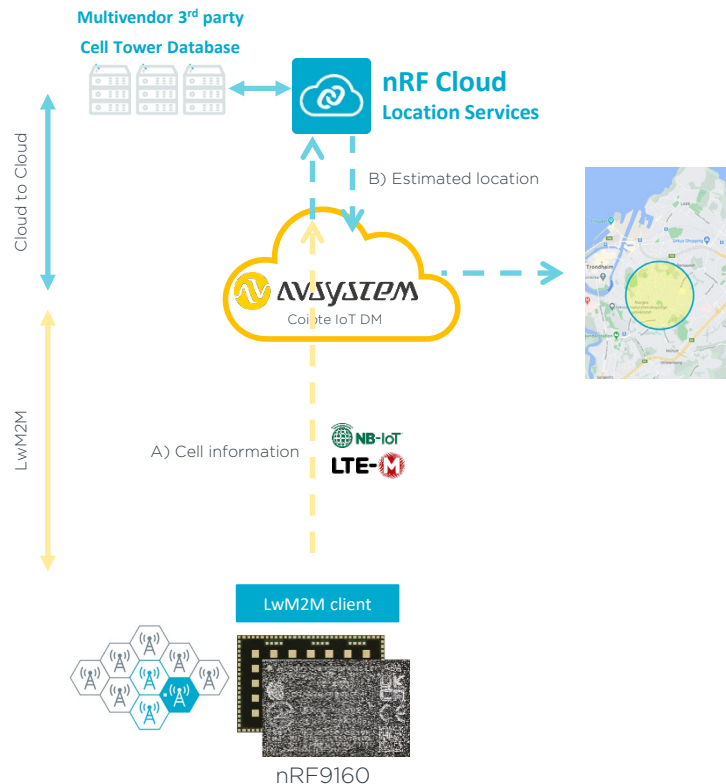
[Step by step using LwM2M Client in nRF Connect SDK](#)

Demo: Preparing the cloud accounts



- Setting up developer account at AVSystem
- Setting up developer account at nRF Cloud
- Enable nRF Cloud Location system integration in AVSystem

Demo: Cell based location via LwM2M

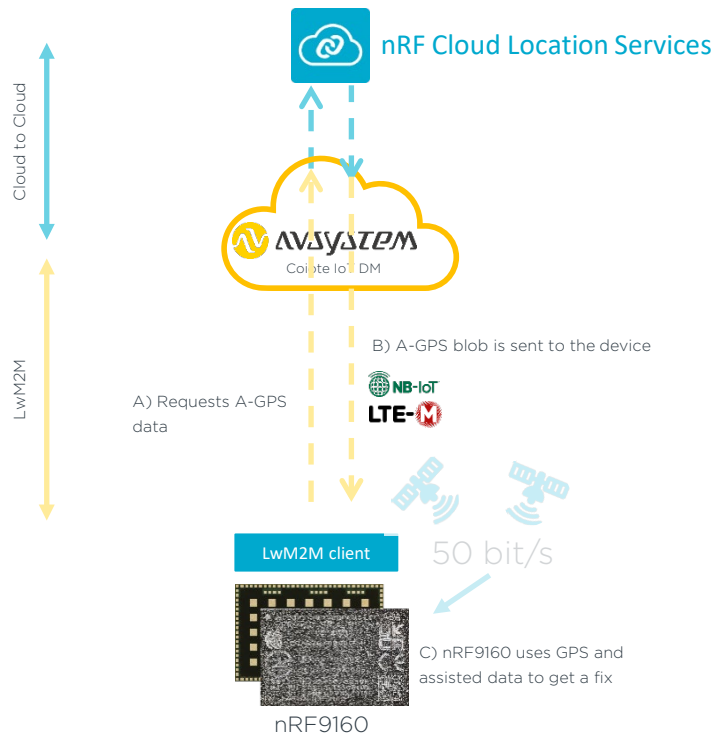


S-CELL and M-CELL uses cell info to get an estimated location

- Both indoor & outdoor
- Single Cell (accuracy up to 1000 meters)
- Multi Cell (accuracy up to 300 meters)
- Low Power (zero TTFF)

Demo: Flashing nRF9160DK with LwM2M Client from nRF Connect SDK (overlay-assist-cell.conf) & getting estimated location in AVSystem dashboard

Demo: A-GPS via LwM2M



Assisted GPS

- Download assistance data over cellular IoT (e.g. ephemeris, almanac)
- Faster Time to First Fix (TTFF)
- lower power than standard GPS
- Still uses GPS to get a fix

Demo: Flashing nRF9160DK with LwM2M Client from nRF Connect SDK (overlay-assist-agps.conf) and getting assisted data to nRF9160; finally computing GPS fix locally on nRF9160

Buy an nRF9160 DK and follow the steps here:

www.nordicsemi.com/avsystem

Register for upcoming Nordic Tech Webinars

www.nordicsemi.com/webinars

Q&A

Register for upcoming Nordic Tech Webinars

www.nordicsemi.com/webinars