



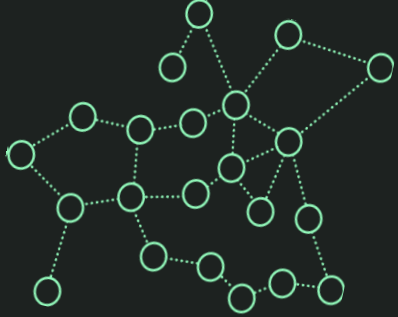
HOW TO SIMPLY MANAGE MASSIVE IOT DEPLOYMENTS

WIRELESS IOT CONNECTIVITY AT MASSIVE SCALE

YOUSSEF KAMEL

SVP Ecosystem Partners

OUR STRATEGIC FOCUS



100x
1 000x
10 000x
100 000x
1 000 000x



CONNECTIVITY

Reliable, optimized, scalable and simple to use wireless mesh **connectivity**.

SOFTWARE

The **software** core for de-centralized device connectivity, and open source reference software from node to cloud.

ROBUST PERFORMANCE

Industrial grade **massive IoT applications** and solution for our customers.

ECOSYSTEM

Building partnerships so that together we can offer turnkey solutions to end customers.

WIREPAS VALUE

DESIGNED FOR MASSIVE IOT

HIGH PERFORMANCE

EASY TO INSTALL AND PROVISION

SCALE AND DENSITY

HIGH RELIABILITY

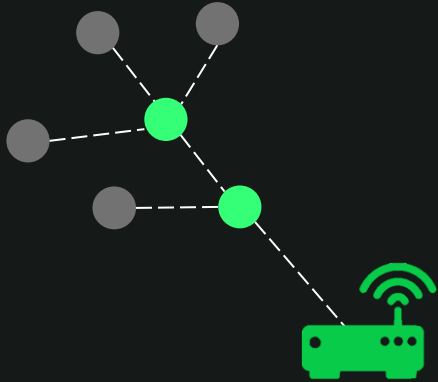
LOW POWER POSITIONING



WIREPAS MESH: DESIGNED FOR MASSIVE IOT

Local

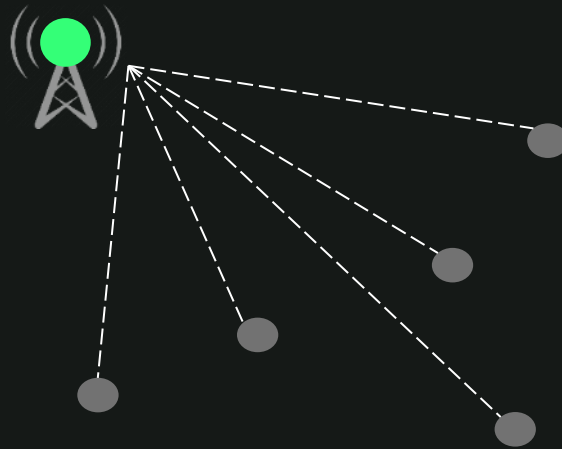
Local area and small installations



Zigbee, Thread, BLE Mesh, Z-wave

Wide Area

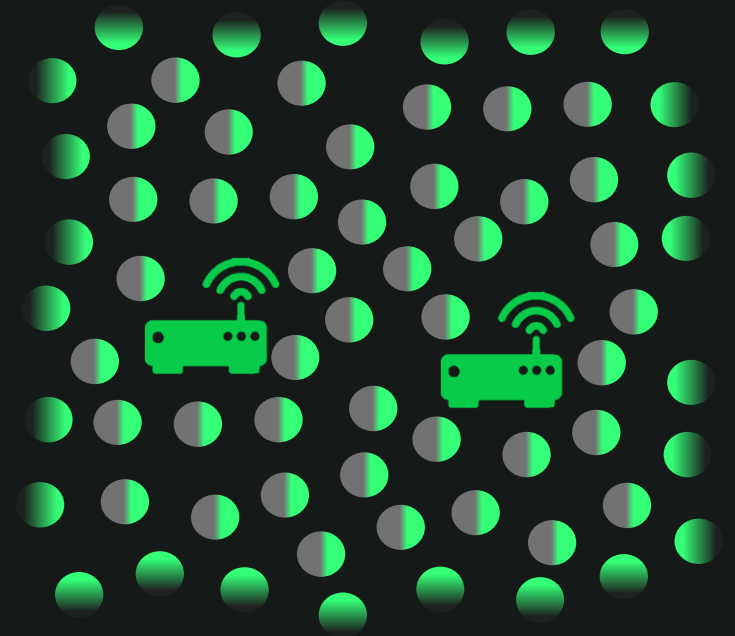
Wide area and sparse installations with limited bandwidth



SigFox, LoRA, Ingenu, NB-IoT

Massive IoT

Any scale, any density, any location with positioning



Centralized

De-centralized

FOCUS APPLICATIONS

**LOGISTICS AND
ASSET TRACKING**



SMART LIGHTING



**INDUSTRIAL AND
GENERAL IOT**



**SMART
METERING**

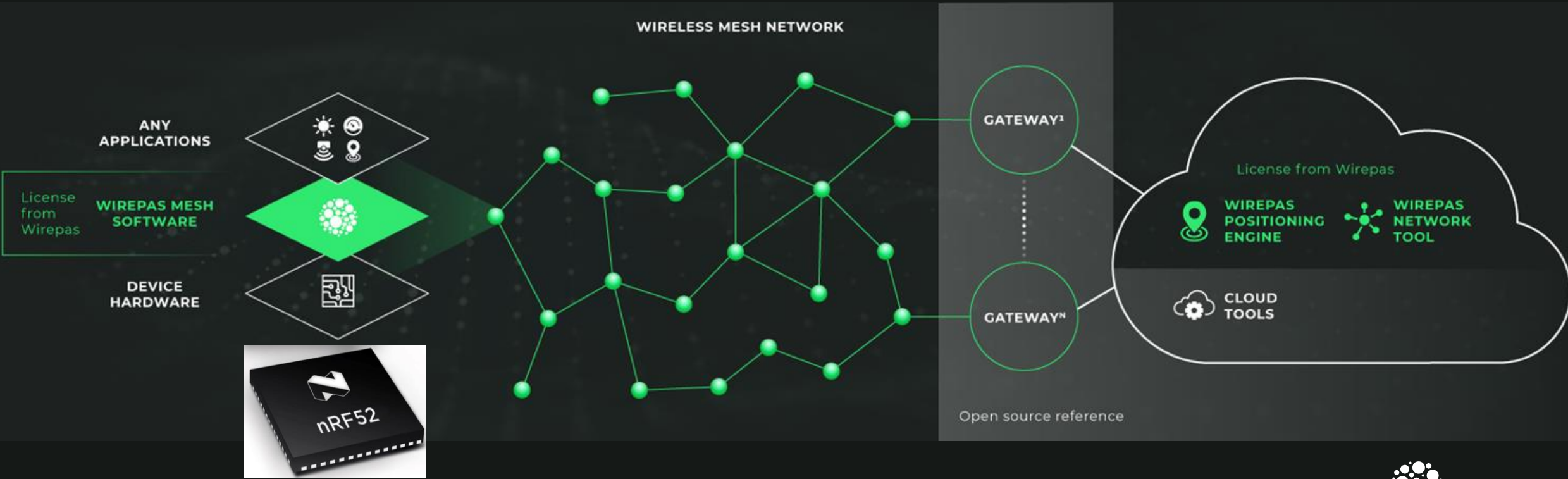
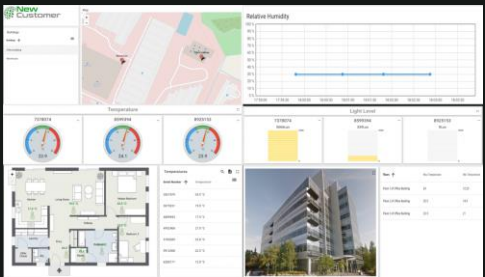


WIREPAS MESH OVERVIEW

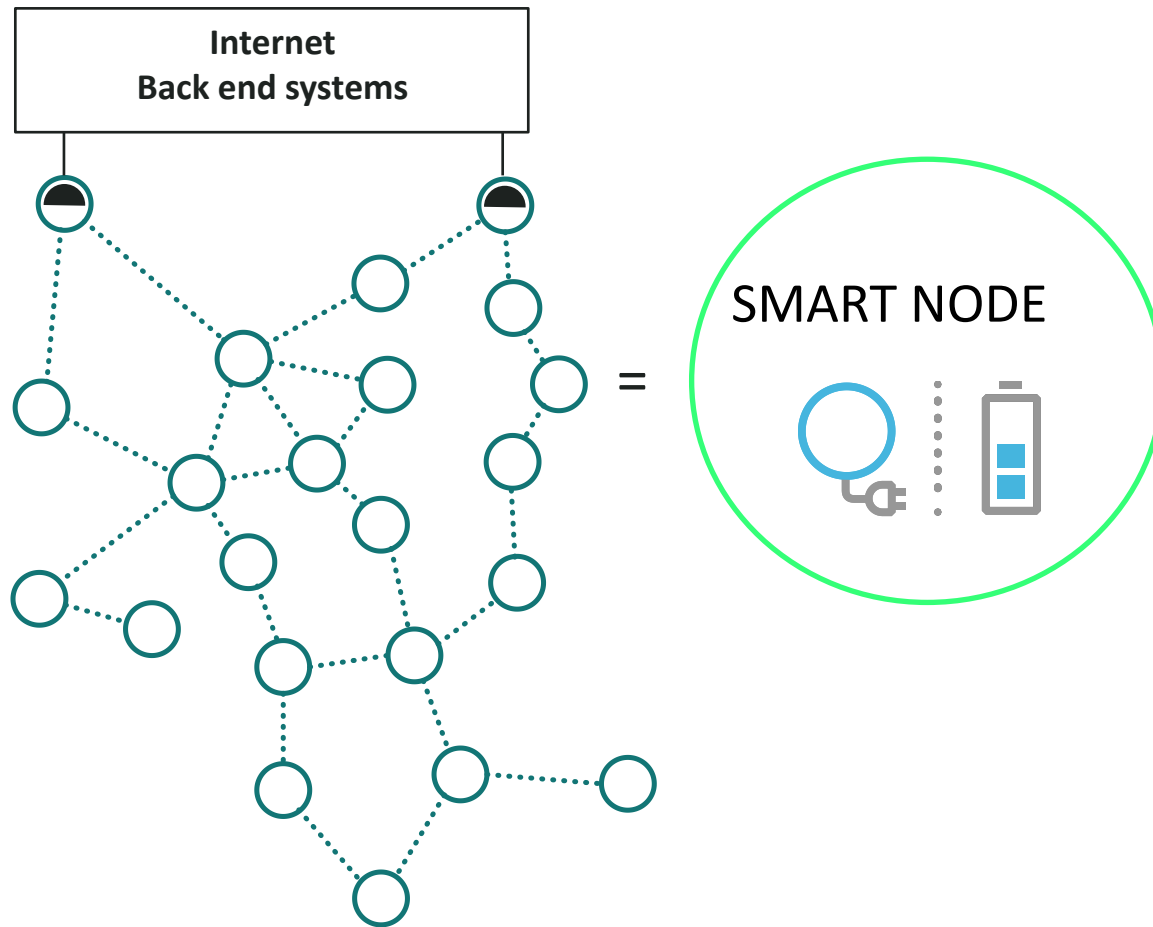
Customer Hardware



Customer Dashboard

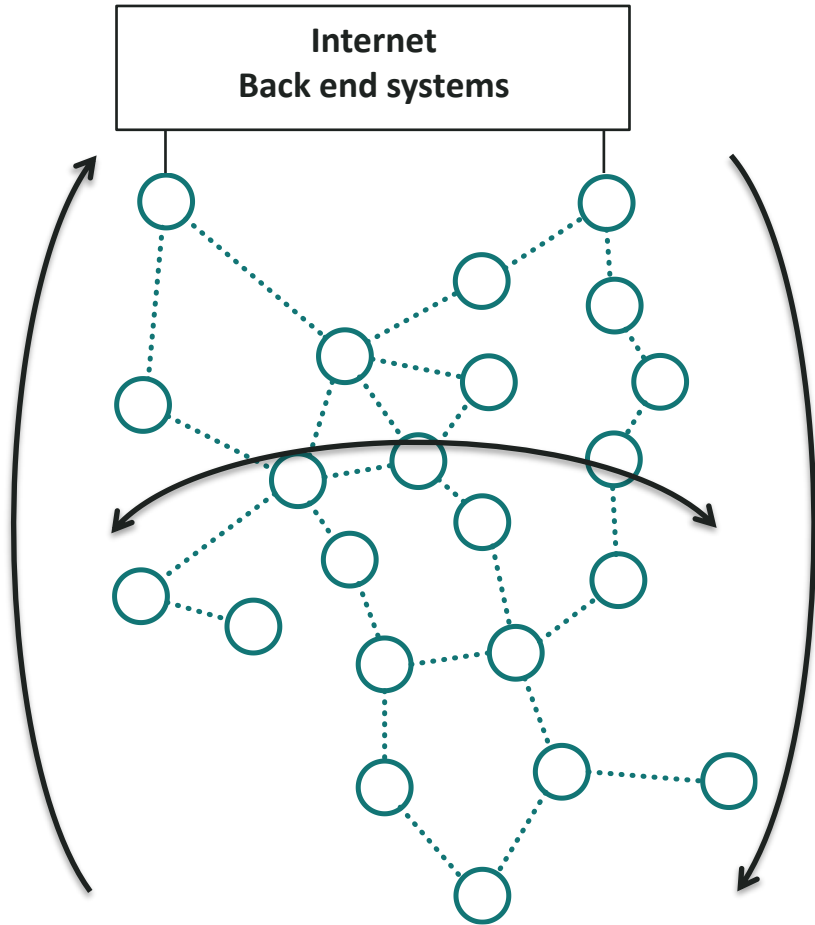


Wirepas Mesh – De-centralized operation



- A node automatically scans its neighborhood, chooses the router which has the best path to the gateway.
- It becomes a router and extends the network coverage
- Each device decides its role locally, all devices are capable to route at low power
- No network manager, no coordinator
- No network tables
- All decisions are done locally

Any communication direction

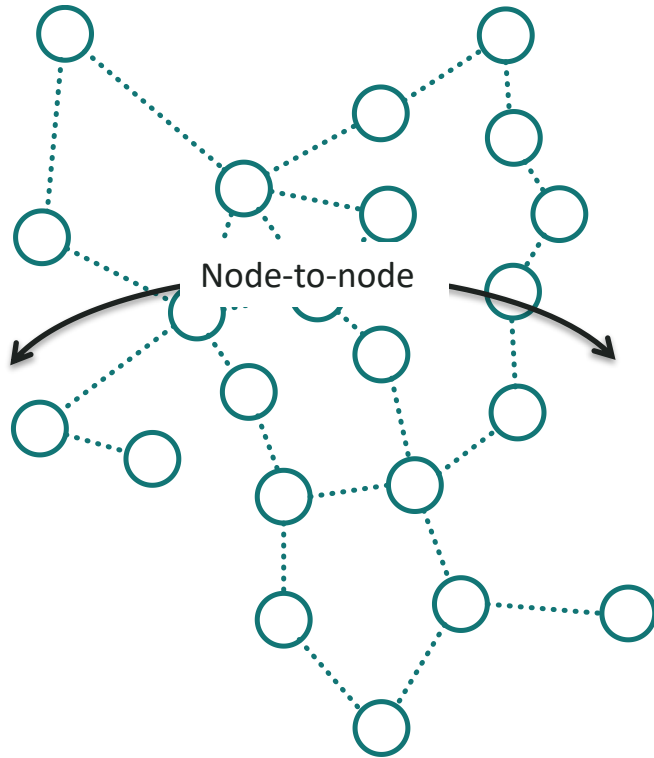


Data gathering uplink

Control and updates downlink

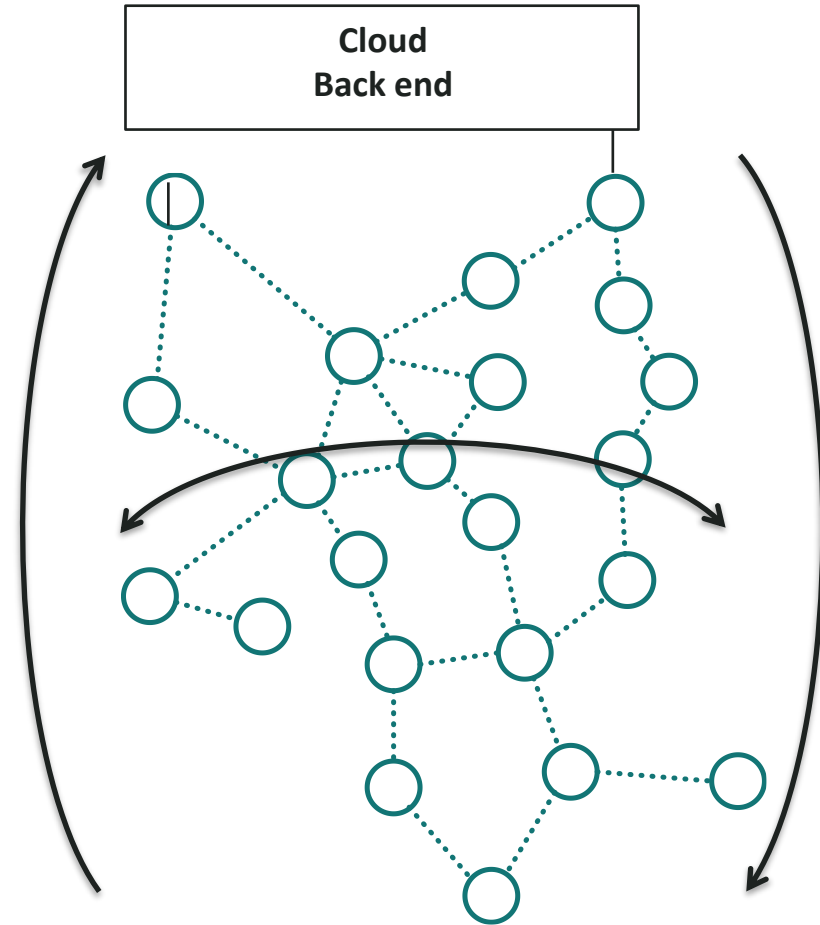
Direct node-to-node communication

Topologies



Gateway-less network

Gateway(s) can be added at any stage to connect the local network to the cloud



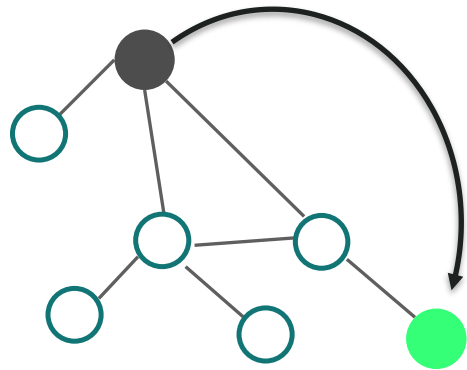
Single or multi-Gateway network

Messaging: Unicast, Broadcast and Multicast

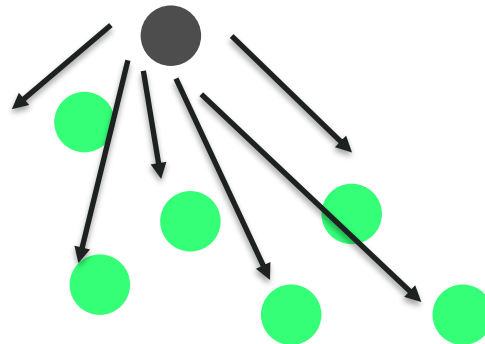
UNICAST : Send to a specific device

BROADCAST: Send to all devices

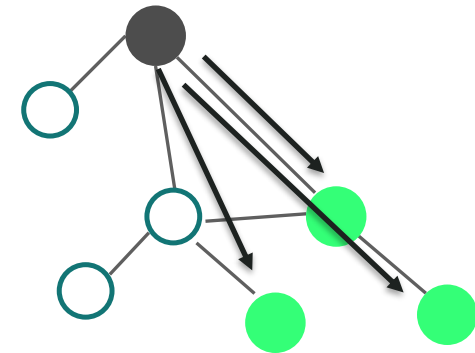
MULTICAST: Send to a group of devices



Unicast



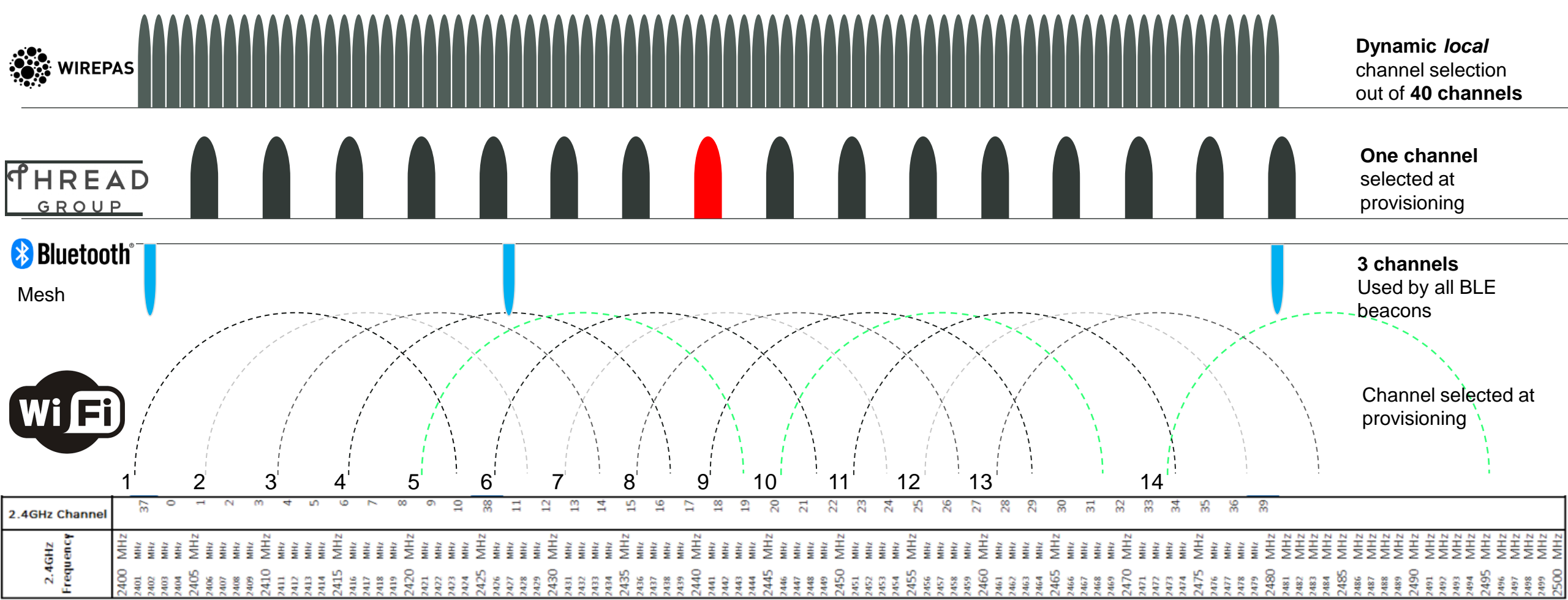
Broadcast



Multicast

INTERFERENCE TOLERANCE

Dynamic local channel selection



FIT FOR PURPOSE PERFORMANCE*

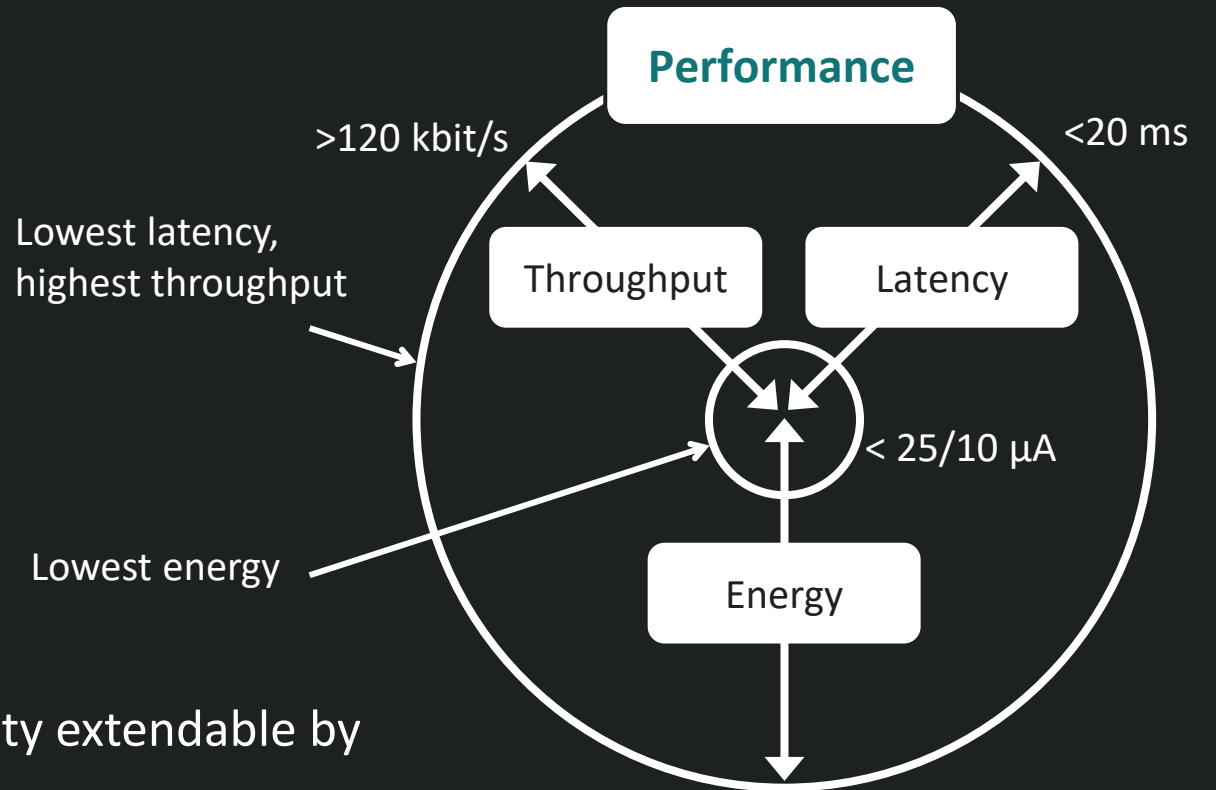
< 25 μ A router current (in low power mode)

< 10 μ A non-router current

< 20 ms per hop latency

> 120 kbit/s application data throughput

- Network throughput via 1 Gateway, network capacity extendable by adding gateways



* Examples on 2.4 GHz PHY

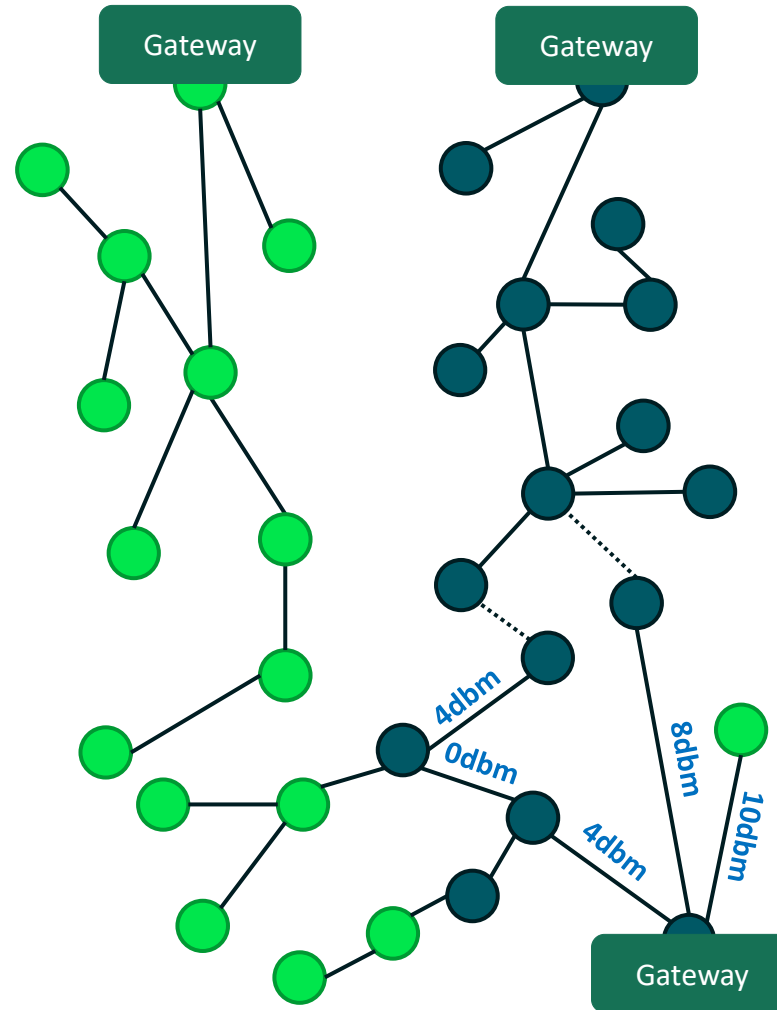
LARGE SCALE AND HIGH DENSITY

Decentralized operation

- All network decisions are done locally
- Any device can be a router at any time

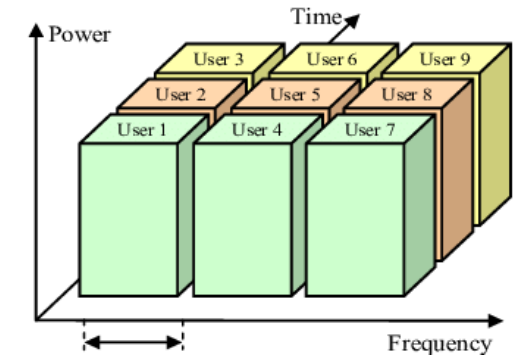
Short time on Air

- High data-rate to minimize time on air
→ Less collisions for high density



Locally synchronized and frequency agile

- Combination of FDMA and TDMA



Adaptive Transmit Power

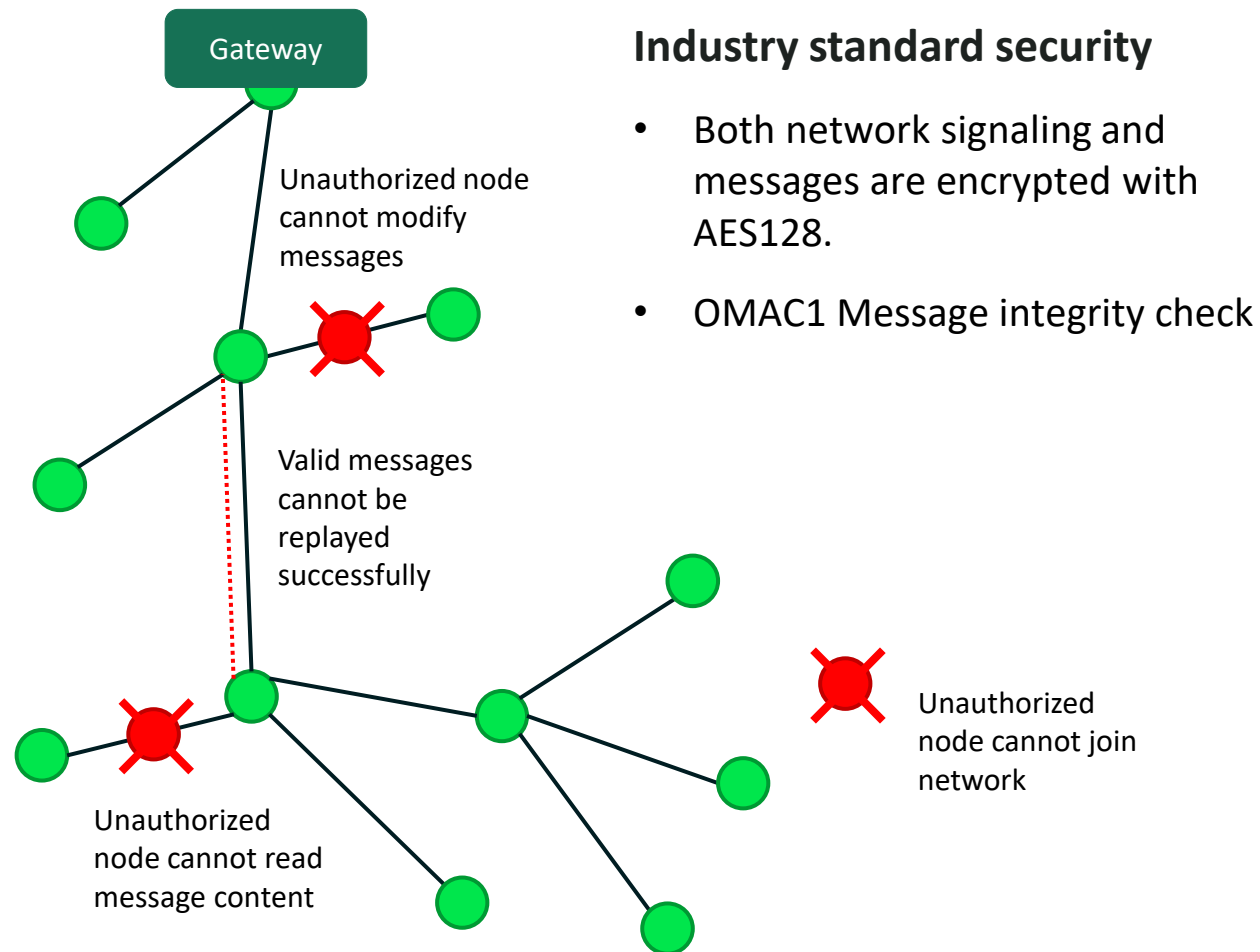
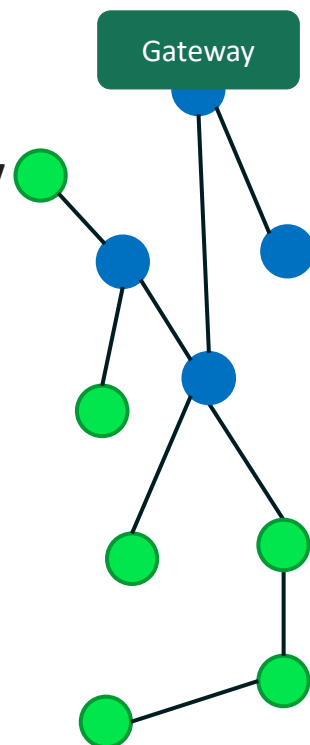
- Nodes adjust Tx power depending on neighbor proximity

SECURE AND FUTURE PROOF

Native OTA can be used to securely update :

- Wirepas Mesh firmware
- Application software

Firmware images are encrypted

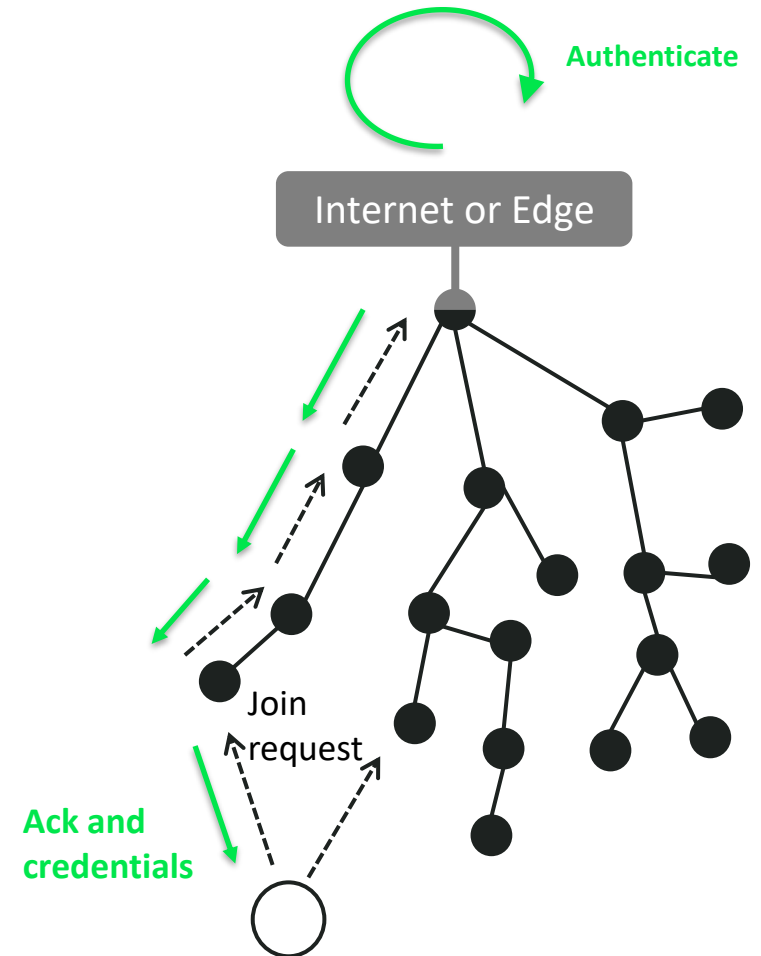


Industry standard security

- Both network signaling and messages are encrypted with AES128.
- OMAC1 Message integrity check

AUTOMATIC PROVISIONING

- A new device declares itself to the network
- Gets authenticated
- Receives its network credentials securely and joins the network
- Authentication can be local or cloud-based
- Provisioning does not disrupt network operation while new devices are added



*BLE, NFC and other out of band provisioning also supported

SELF- INSTALLATION

EASY TO INSTALL AND PROVISION

Installation requires zero configuration by the user

Mesh routers can be battery operated

Secure self-joining : the installer does not get access to network keys

No infrastructure required



RESILIENT COVERAGE & RELIABILITY

PROVEN RELIABLE CONNECTIVITY

99.99% availability in large-scale installations with over 700 000 devices per network thanks to patented routing algorithm which allows millions of decisions in parallel.



DEMANDING IOT

Designed to work in environments with thousands of other wireless devices producing interference, metal and harsh environmental conditions.



SCALE AND DENSITY

COLLISION-FREE COMMUNICATION

Up to 1,500 devices in one cubic meter can have 2-way communication with no collisions

ACCURATE INVENTORY

Wirepas Mesh can detect & identify up to 5,000 devices in one minute



LONG BATTERY LIFE

BATTERY POWERED ROUTERS

More than 4-year lifetime with two AAA battery, with continuous bi-directional connection and device routing data.

Bi-directional low power switch enabling 5-year lifetime with a coin cell battery.

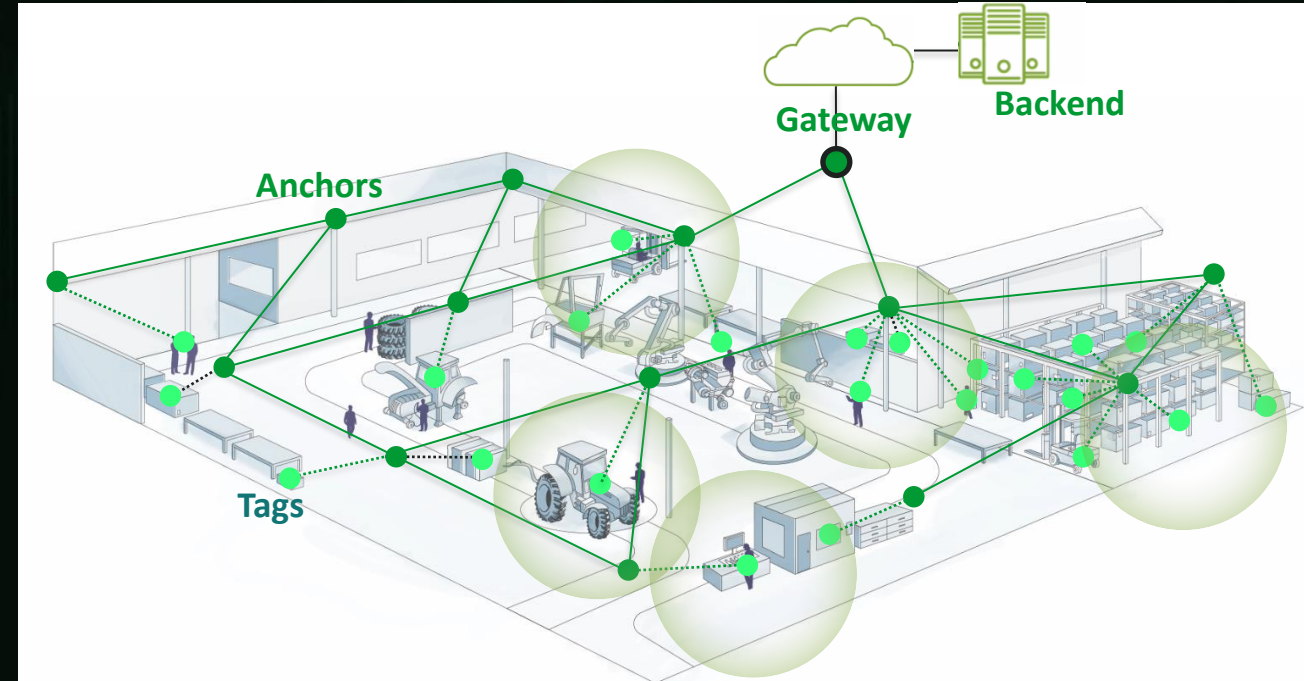
Support for energy harvesting switches



BUILT-IN POSITIONING

Wirepas Positioning Engine works with battery operated anchors

- Each fixed device operates as a position anchor
- RSSI measurements are done by the moving assets, minimizing traffic
- Simple install and low cost retrofit
- Works for **any** size of installation
- < 5m accuracy for most indoor deployments
- Lightweight & simple asset application code



USE CASES AND PARTNER SOLUTIONS

MONITORING AND CONTROL

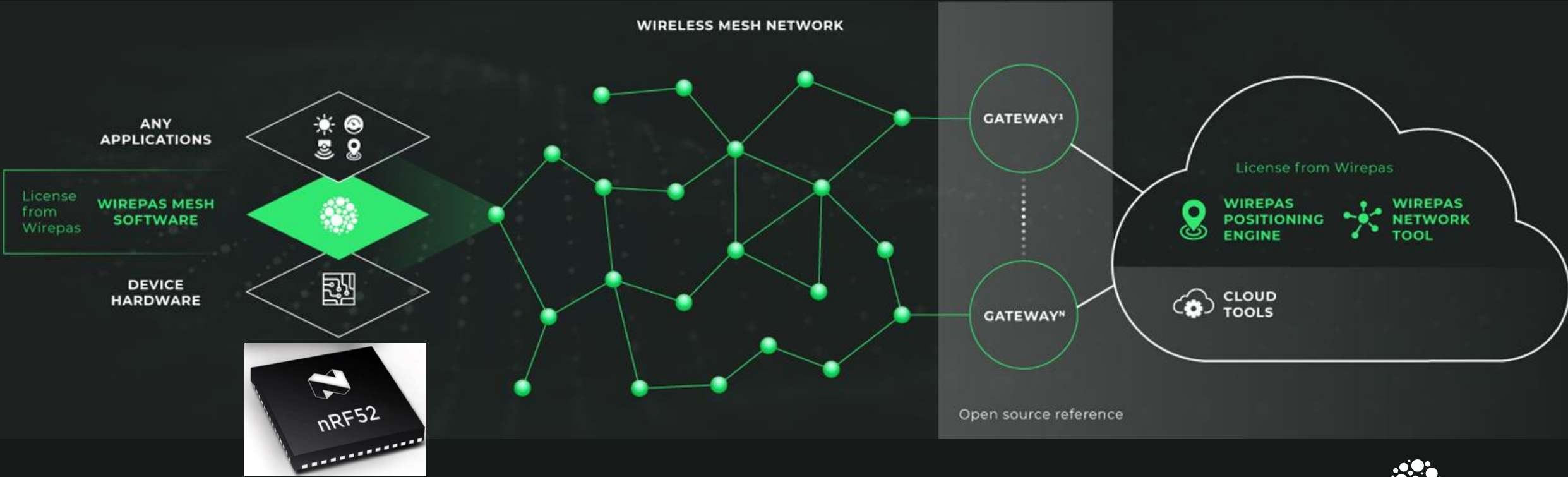
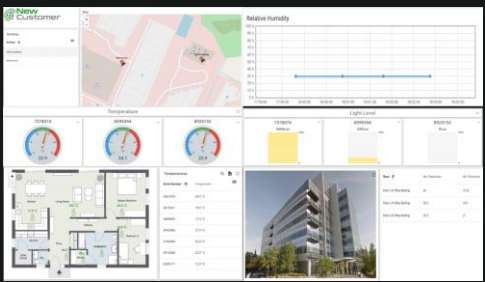
DEVICE TO CLOUD SOLUTION

SEAMLESS SENSOR TO CLOUD INTEGRATION

Customer Hardware



Customer Dashboard



WIRELESS CONDITION MONITORING SYSTEM

CASE SULZER

SOLUTION AND BENEFITS

- Sulzer uses Wirepas Mesh to manage predictive maintenance of their pumps.
- Thanks to easy installation and long battery autonomy, the system is retrofitted to existing pumps.
- TREON provide the industrial sensors and deploy the end-to-end monitoring system.



SMART LOCKER SOLUTION

CASE POSTI GROUP

SOLUTION AND BENEFITS

Finland's main postal service, deploys Wirepas Mesh in their smart locker solution and get:

- reliable wireless control of the lockers
- real-time status of the lockers,
- Improved security allowing wide self-service network.
- Centralized control of the lockers from Posti's system.
- Faster customer service and operation.



REMOTE MONITORING FOR MANUAL VALVES

CASE HALTIAN

SOLUTION AND BENEFITS

- Quick and easy to install on any valve – no cabling
- The valve position data is reported to the control system in real-time.
- Major reduction of accidents rates and increase of safety at the plant

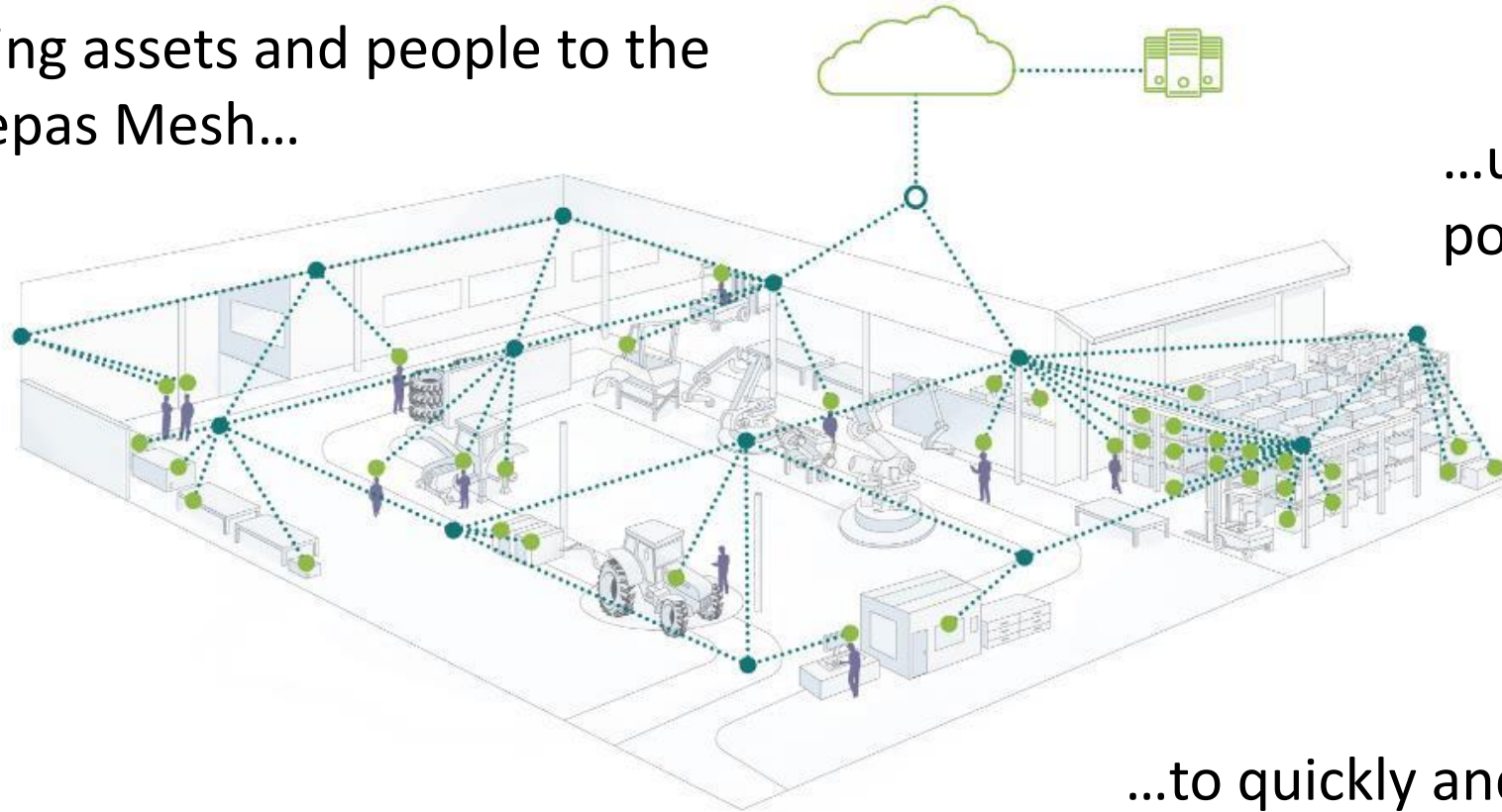


ASSET TRACKING

END TO END SUPPLY CHAIN VISIBILITY

LOCATING PEOPLE AND THINGS

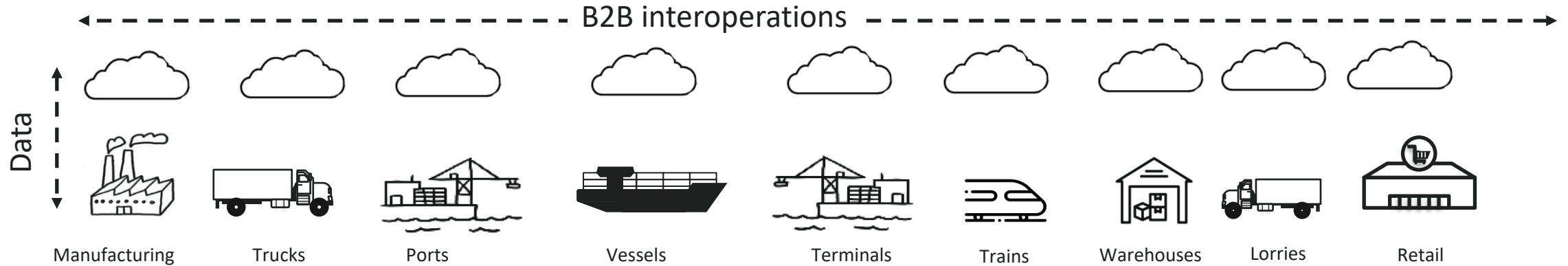
Linking assets and people to the Wirepas Mesh...



...using anchor nodes as positioning infrastructure...

...to quickly and easily locate people and assets

END TO END LOGISTICS



- Wirepas provide wireless technology supporting:
 - Self-provisioning
 - Seamless Roaming from location to location
 - Fast inventory for secure business to business handover

PALLET TRACKING

WORLD LEADER IN TRACEABLE PALLETS:

- End-to-end pallet tracking as a service.
- Real-time inventory of pallets at service centers and gates
- Real time condition monitoring of goods
- Dimensioned for individual goods tracking
- Goods in, goods out identification



WAREHOUSES

CASE PROLOGIS

Prologis is the world biggest logistic warehouse owner

Their IoT platform, powered by Wirepas Mesh connectivity, has tens of use cases.

- Real estate condition monitoring
- Lighting control and energy saving
- Asset tracking
- Goods in, goods out identification



SAFE CONSTRUCTION

CASE WAKECAP

SOLUTION AND BENEFITS

- WakeCap is an enterprise solution to improve construction safety & productivity
- By using Wirepas Mesh, Wakecap was able to cut their development time and come up with their solution in a record time.
- Affordable deployment, extremely easy on-site installation and long battery life.



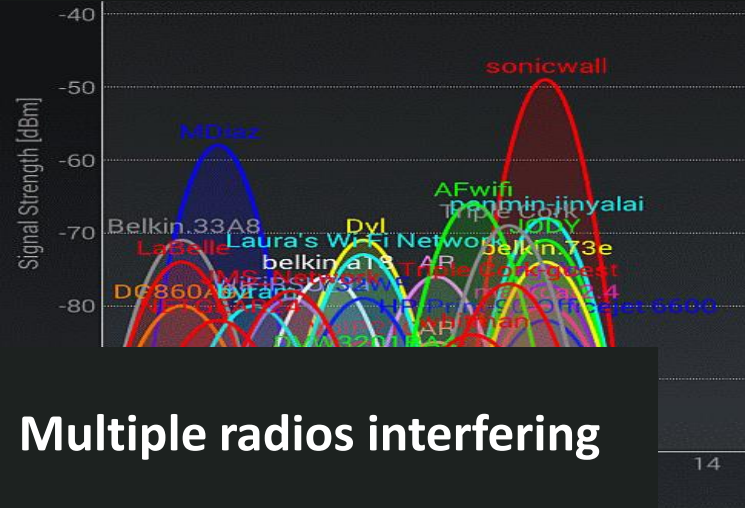
LIGHTING

SEAMLESS INSTALL AND CONTROL
FUTURE PROOF DATA COLLECTION

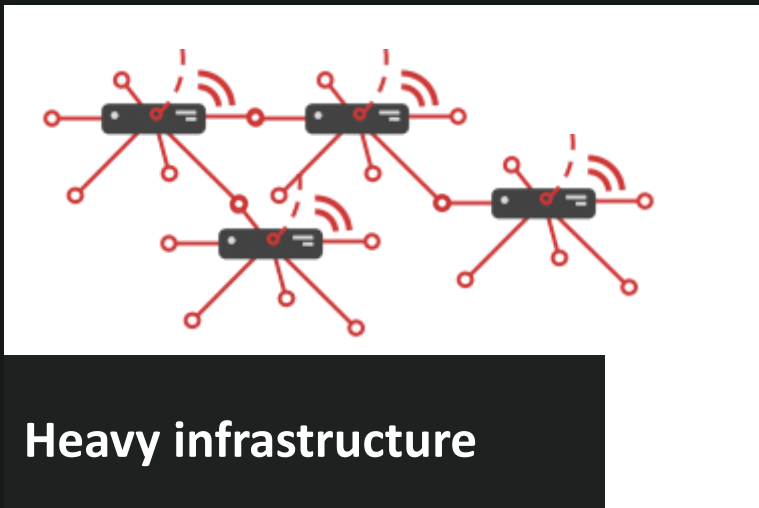
CHALLENGES WITH SMART LIGHTING DEPLOYMENTS



Complex and costly installation



Multiple radios interfering

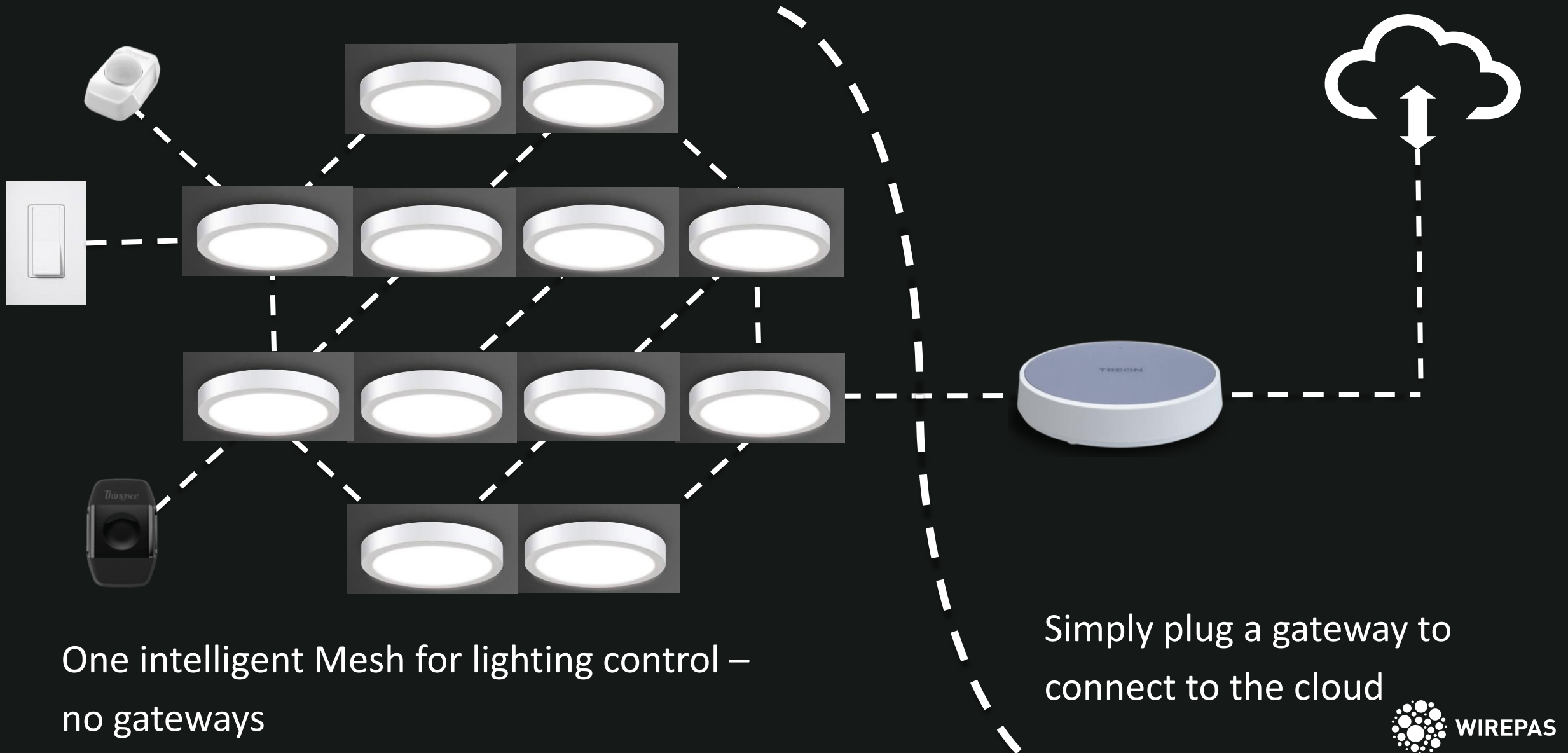


Heavy infrastructure



Too slow traffic for IoT

THE SOLUTION: ONE MESH – UPGRADEABLE TO FULL IOT



LIGHTING CONTROLS

CASE MOUNT KELVIN

SOLUTION AND BENEFITS

Wirepas Mesh is the backbone of the lighting controls system with BLE beaconing to communicate with EnOcean switches, mobile app and Alexa.

- 100's per building
- Lighting control
- Heat mapping



EMERGENCY LIGHTING

CASE EXILIGHT

SOLUTION AND BENEFITS

- Every fitting self-discovers other fittings around to form the network.
- Minimal commissioning and system management time.
- Easy installation
- No maintenance
- Over 1000 lights with one gateway



QUESTIONS ?

- Downloads and use cases:
www.wirepas.com/downloads
- Opensource software:
<https://github.com/wirepas>
- Technical support questions:
sebastien.pellorce@wirepas.com
- How to engage and partner with Wirepas:
ben.corrado@wirepas.com

THANK YOU