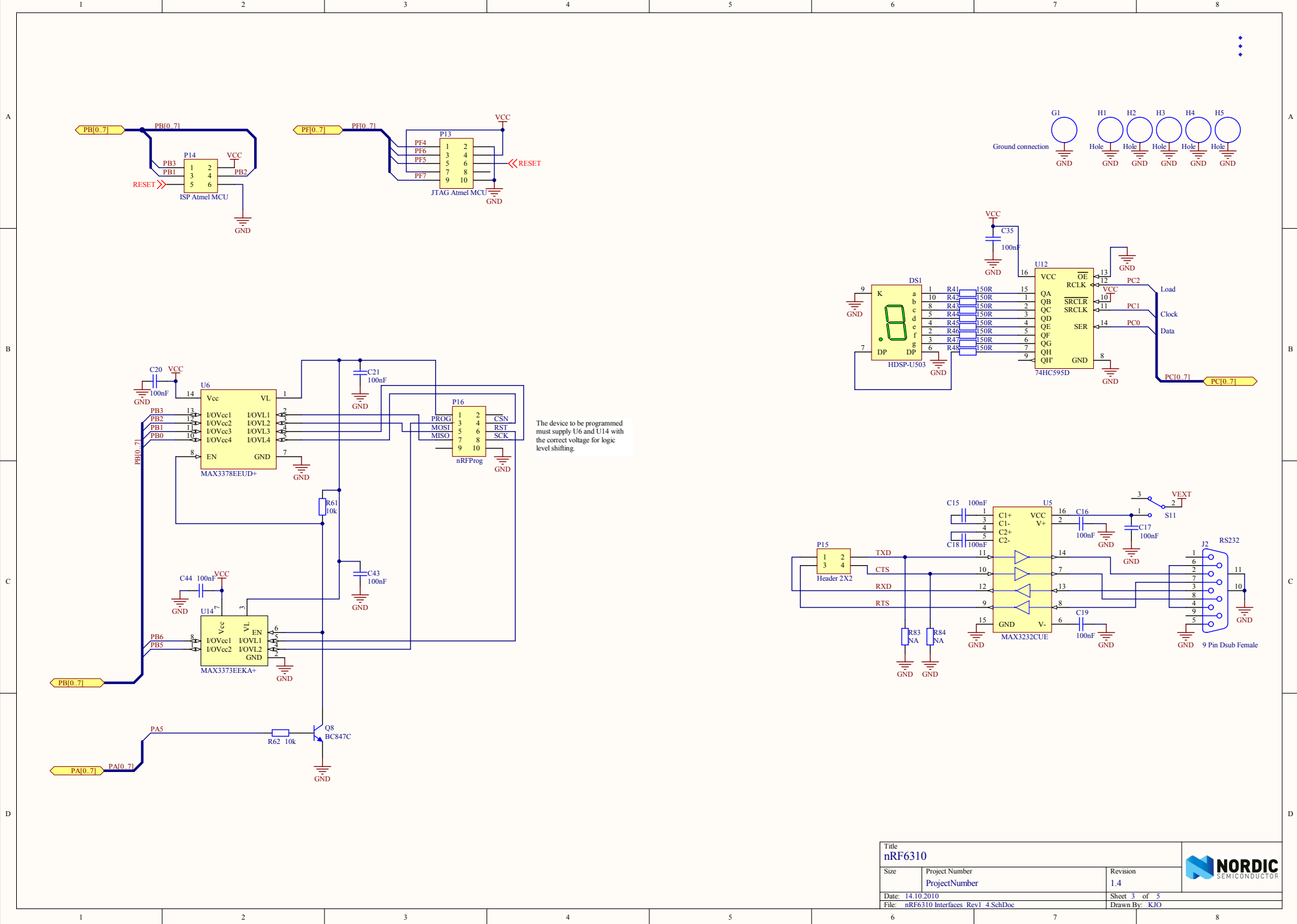
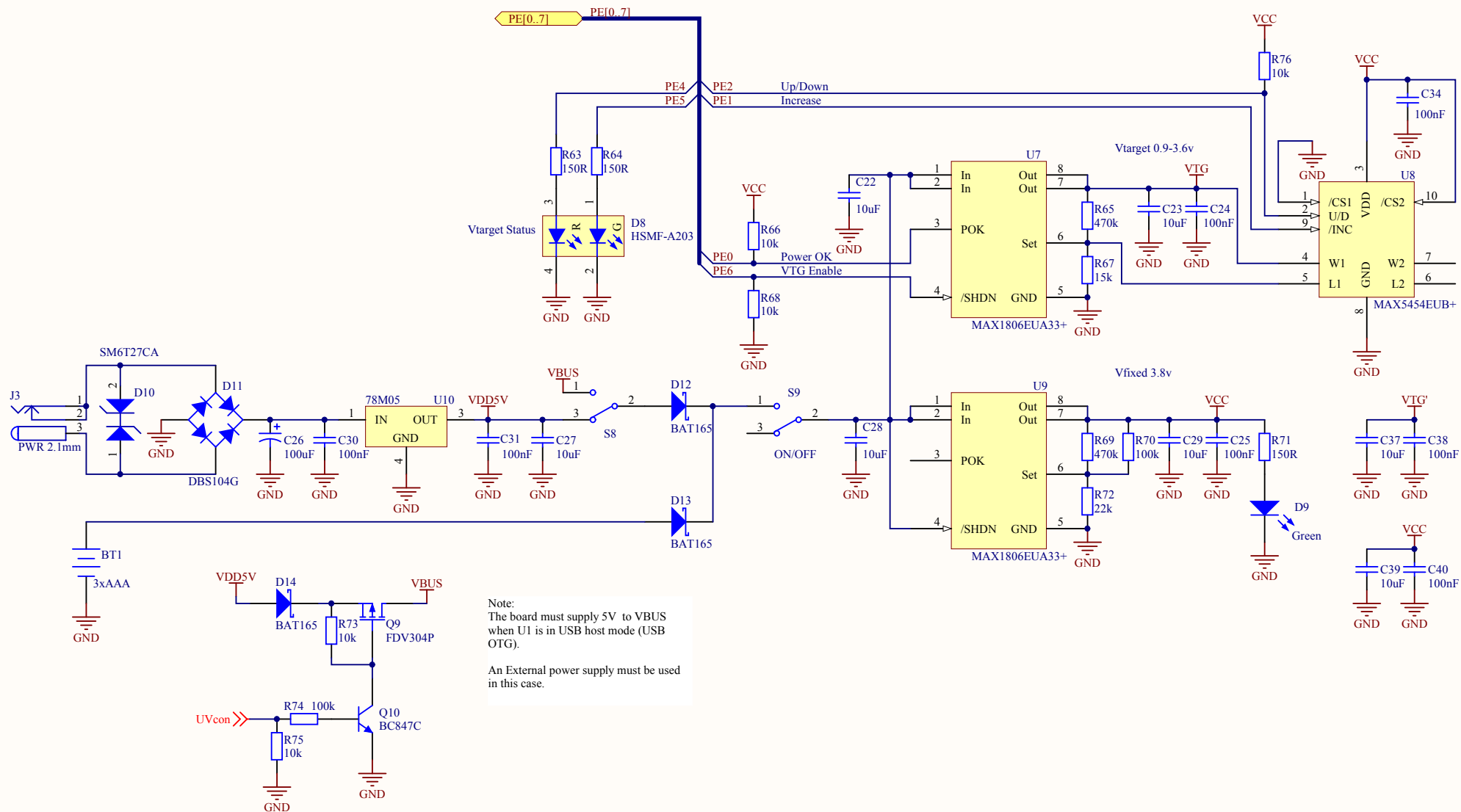



Device ports

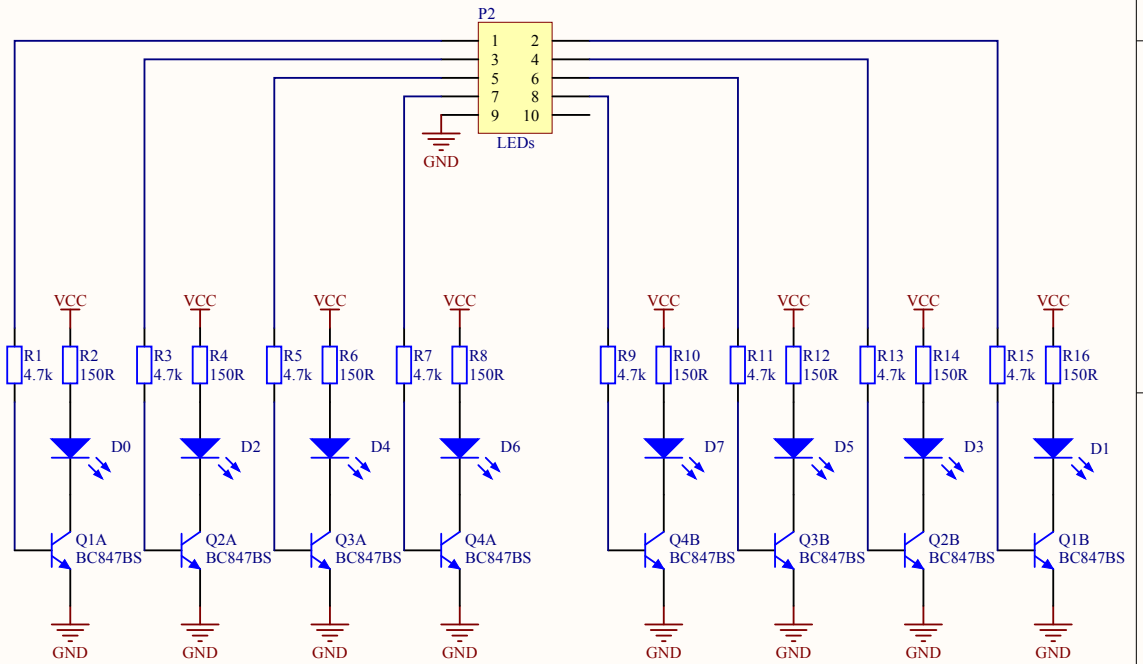
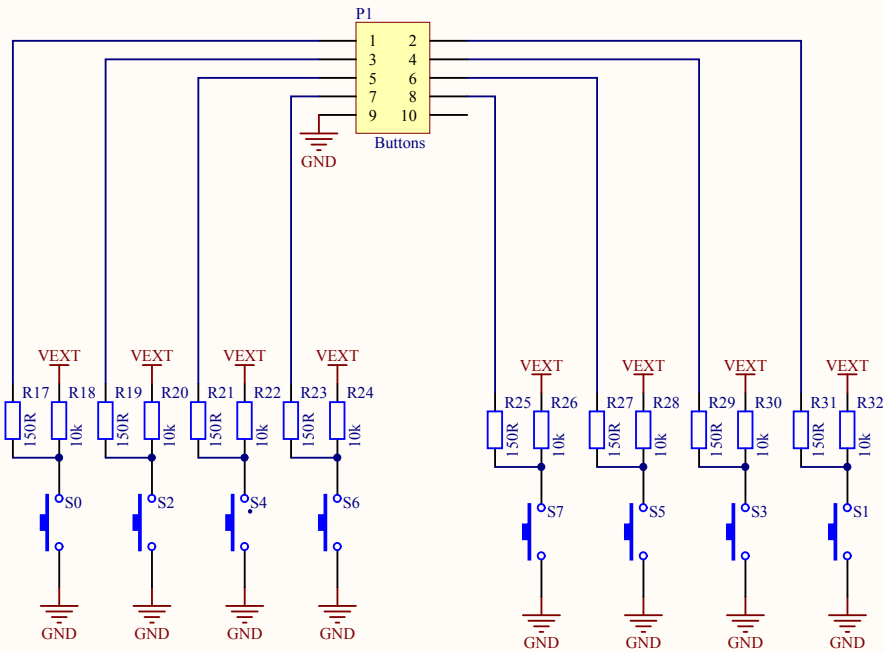
Expansion ports

BoardID >>> BoardID
ExtID >>> ExtID





Title nRF6310			
Size	Project Number		Revision 1.4
Date: 14.10.2010			Sheet 4 of 5
File: nRF6310 Power supply Rev1 4.SchDoc			Drawn By: KJO



Title
nRF6310

Size Project Number

Revision
1.4

Date: 14.10.2010

File: nRF6310 Buttons LEDs Rev1_4.SchDoc

Sheet 5 of 5

Drawn By: KJO



Designator	Value	Footprint	Comment	Description	Quantity
		LOGO_L	Logo		1
BT1	3xAAA	Plastic Battery Holder, 3x"AAA" Cells	Keystone 2479	Multicell Battery	1
C1, C2	33pF	0402s	NP0 +/-5%	Capacitor (Semiconductor SIM Model)	2
C3, C5	NA	0603s	X7R 16V	Capacitor (Semiconductor SIM Model)	2
C4, C6, C7, C9, C10, C11, C12, C15, C16, C17, C18, C19, C20, C21, C24, C25, C3 C34, C35, C36, C38, C40, C41, C42, C43, C44, C45, C46	100nF	0603s	X7R 16V	Capacitor (Semiconductor SIM Model)	29
C8, C22, C23, C27, C28, C29, C33, C37, C39	10uF	8-1206	X7R 6.3V	Capacitor (Semiconductor SIM Model)	9
C13, C14, C30	100nF	0603s	X7R 50V	Capacitor (Semiconductor SIM Model)	3
C26	100uF	SMD_RAD-6.3	Ellyt 25v SMD 6.3x7.7mm	Polarized Capacitor (Surface Mount)	1
D0, D1, D2, D3, D4, D5, D6, D7, D9	LED Green 0603	1.6X0.8X0.8	Green	High Performance Chip LED, Amber	9
D8	HSMF-A203	3.2X2.7X1.1	Farnell 105-8420	Surface Mount Chip LED (Red/Green)	1
D10	SM6T27CA	SOD6	SM6T27CA		1
D11	DBS104G	Bridge	Elfa 70-431-2	Full Wave Diode Bridge	1
D12, D13, D14	BAT165	SOD-323	BAT165	Silicon AF Schottky Rectifier Diode	3
DS1	HDSP-U503	U	Avago	8 mm Gray Surface Ultra Mini Green 7-Segment Display: CC, RH DP	1
G1	Test point Elfa 48-936-08	Hole 4mm	Ground connection		1
J1	Molex 0565790519	Molex 56579-0519	Mini USB ABF	Mini USB AB Female	1
J2	9 Pin Dsub Female	DSUB1.385-2H9	D Connector 9 Female	Receptacle Assembly, 9 Position, Right Angle	1
J3	Power Connector 2.1mm	Power supply socket 2.1mm	Elfa 42-051-59		1
P1, P2, P8, P9, P10, P11	2.54mm Dual Pinlist 10 pin	HDR2X5	Header	Header, 5-Pin, Dual row	6
P3, P4	Samtec TFC-120-X2-L-D-A	TFC-120-X2-L-D-A	Header	Header, 20-Pin, Dual row, Header, 20-Pin Dual row,	2
P5, P6	Harwin M20-7832046	HDR2X20	Header	Header, 20-Pin, Dual row, female	2
P7	Pinlist 2.54mm 2 pin	HDR1X2	Jumper	Header, 2-Pin	1
P12, P16	IDC Male 2x5	IDC2x5	Header	Header, 5-Pin, Dual row	2
P13	NA	HDR2X5	Header	Header, 5-Pin, Dual row	1
P14	2.54mm Dual Pinlist 6 pin	HDR2X3	Header	Header, 3-Pin, Dual row	1
P15	Header 2x2	HDR2X2	Header 2X2	Header, 2-Pin, Dual row	1
P17	NA	HDR2X5	Debug	Header, 5-Pin, Dual row	1
P18	NA	HDR1X2	USB Reset	Header, 2-Pin	1
Q1, Q2, Q3, Q4	BC847BS	SOT363	BC847BS	NPN General-purpose Double Transistor	4
Q5, Q6, Q7, Q8, Q10, Q14	BC847C	SOT23	BC847C	NPN Bipolar Transistor	6
Q9, Q11	FDV304P	sot-23	MOSFET-P	P-Channel MOSFET	2
Q12, Q13	FDV301N	sot-23	MOSFET-N	N-Channel MOSFET	2
R1, R3, R5, R7, R9, R11, R13, R15	4.7k	0402s	1%	Resistor	8
R2, R4, R6, R8, R10, R12, R14, R16, R17, R19, R21, R23, R25, R27, R29, R31, R4 R43, R44, R45, R46, R47, R48, R49, R63, R64, R71	150R	0402s	1%	Resistor	28
R18, R20, R22, R24, R26, R28, R30, R32, R34, R35, R37, R50, R51, R52, R53, R54, R56, R57, R58, R59, R60, R61, R62, R66, R68, R73, R75, R76, R77, R78, R79, R80, R83	10k	0402s	1%	Resistor	33
R33	390k	0402s	1%	Resistor	1
R36	12k	0402s	1%	Resistor	1
R38, R39	22R	0402s	1%	Resistor	2
R40	0R	0402s	1%	Resistor	1
R65, R69, R81, R82	470k	0402s	1%	Resistor	4
R67	15k	0402s	1%	Resistor	1
R70, R74	100k	0402s	1%	Resistor	2
R72	22k	0402s	1%	Resistor	1
R83, R84	NA	0402s	1%	Resistor	2
S0, S1, S2, S3, S4, S5, S6, S7, S10	ALPS SKHUALE010	ALPS SKHUAD	Elfa 35-790-00	Switch	9
S8, S9, S11	EAO Type 1K2	SW mini2	Elfa 35-365-21	SPDT Subminiature Toggle Switch, Right Angle Mounting, Vertical Actuation	3
U1	AT90USB1287/16AU	64A_N	AT90USB1287		1
U2, U3, U4, U6	MAX3378EEUD+	TSSOP14	MAX3378EEUD+	Low voltage level shifter	4
U5	MAX3232CUE+	TSSOP16	MAX3232CUE	3.0V TO 5.5V, Low-Power, up to 1Mbps, True RS232 Transceiver Using FoU.1uF External Capacitor	1
U7, U9	MAX1806EUA33+	UMAX8	MAX1806	500mA Low-voltage Lin. regulator	2
U8	MAX5454EUB+	UMAX10	MAX5454	MAX5454 100k dual digital potmeter	1
U10	LM78M05CDT	369A-13	78M05	Three-Terminal Medium Current Positive Voltage Regulator	1
U11	M95256-WMN6	SOP8_N	ST95040M1	4K Serial SPI EEPROM with Positive Clk Strobe	1
U12	74HC595D	D016_N	SN74HC595D	8-Bit Shift Register with 3-State Output Registers	1
U13, U14	MAX3373EEKA+	SOT23-8	MAX3373EEKA+	Bi-directional level shifter I2C	2
X1	8MHz	HC49/4H_SMX	8MHz CL=16pF +/-100ppm	Crystal Oscillator	1