

■ Turm

○ CIS Parameter

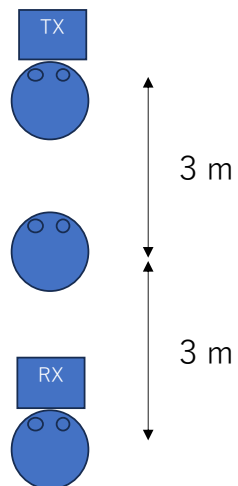
- ISO Interval = 10ms
- RETRANSTIS = 2
- Presentation delay = 10ms

○ Audio

- Input :1kHz

○ Setting

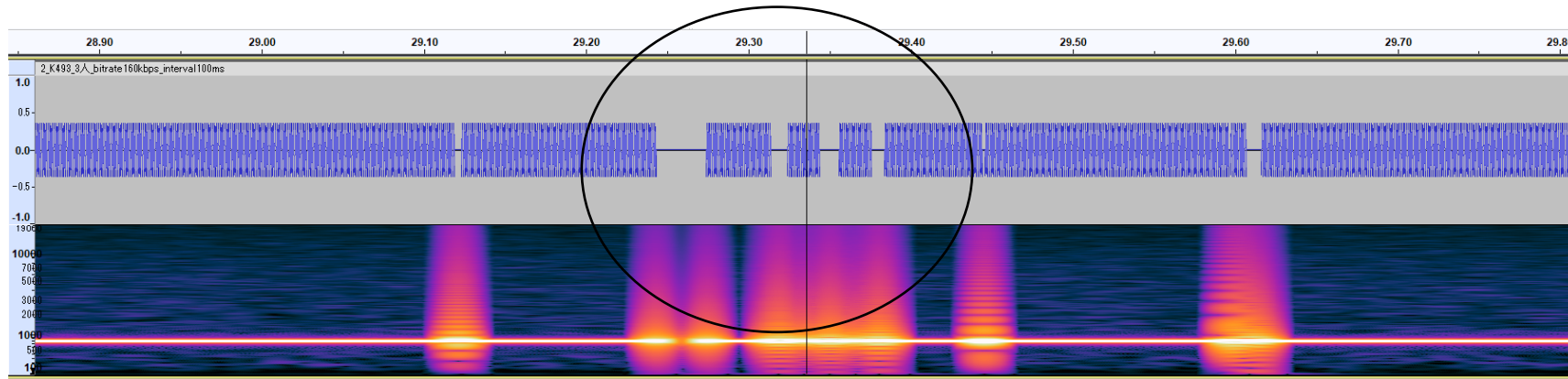
- refer to the following



Refer to protocol analyzer(X-240)

LE LL	
Control Pkt	LL_CIS_REQ
CIG ID	0x00
CIS ID	0x00
PHY_C_to_P	LE 2M PHY
PHY_P_to_C	LE 2M PHY
Max_SDU_C_TO_P	0 octets
Framing_Mode	Not applicable
Framed	Unframed
Max_SDU_P_TO_C	200 octets
SDU_Interval_C_TO_P	10000 才s
SDU_Interval_P_TO_C	10000 才s
Max_PDU_C_to_P	0
Max_PDU_P_to_C	200
Number of Subevents	3
Subevent Interval	1320 才s
Burst Number P_to_C	1
BN_C_to_P	0 (No CIS Payload)
FT_C_to_P	2
FT_P_to_C	2
ISO Interval	10.00 ms
*Calculated Flush Timeout C_to_P	20.00 ms
*Calculated Flush Timeout P_to_C	20.00 ms
CIS Offset Minimum	1256 才s
CIS Offset Maximum	1256 才s
Conn Event Counter	0x002e

■ Audio Wave



■ Spectrum wave

