


# Nordic Semiconductor ASA

## nRF52832 Bluetooth Smart/ANT/2.4GHz RF Development Board (PCA10040)

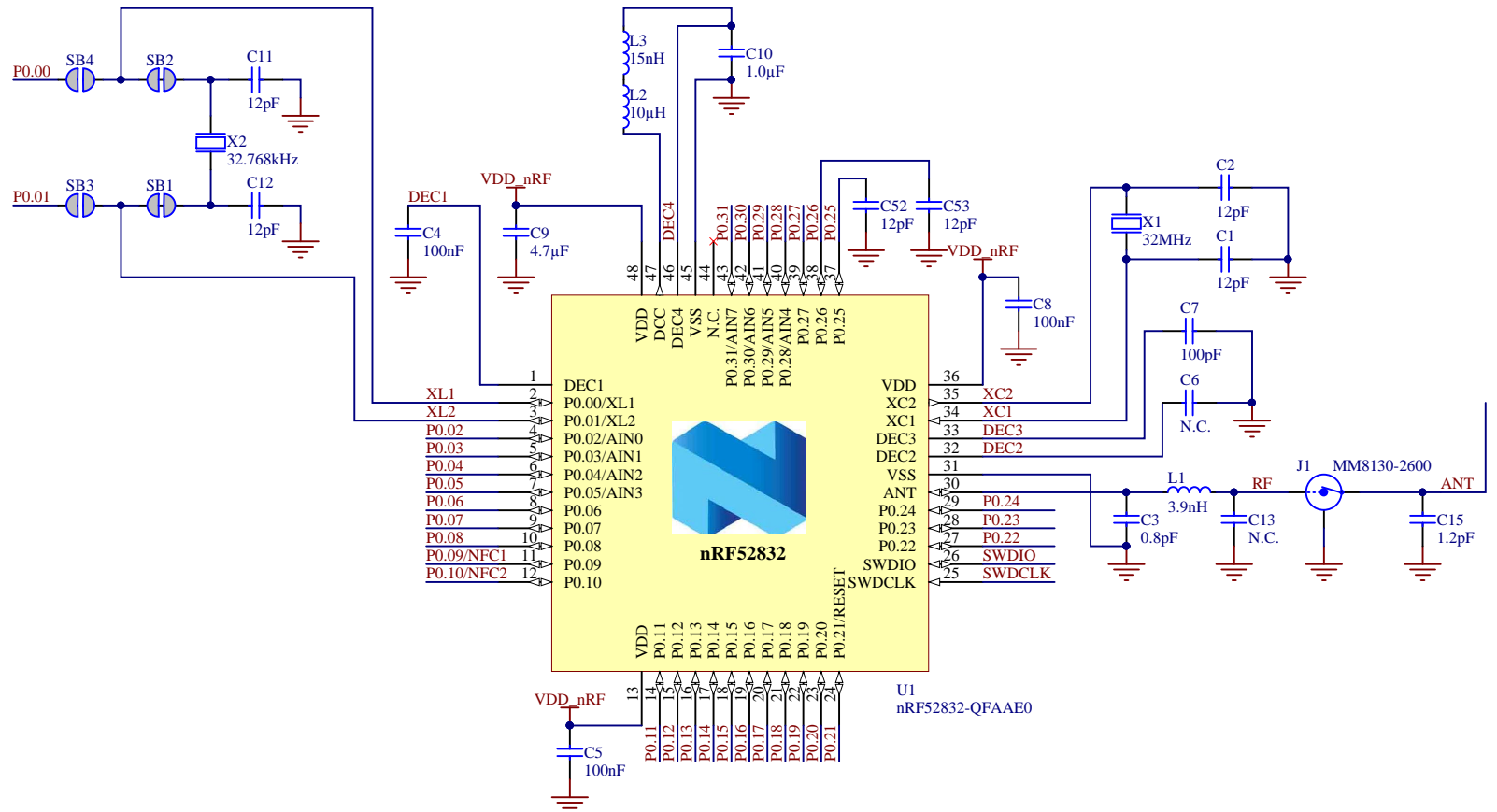
Sheet 1:	Cover
Sheet 2:	nRF Radio
Sheet 3:	Pin Map
Sheet 4:	Interface MCU
Sheet 5:	Buttons and LEDs
Sheet 6:	Connectors
Sheet 7:	Power Supply


✗ The No ERC object is a design directive.  
This directive is placed on a node in the circuit to suppress reported warnings and/or error violation conditions that are detected when the schematic project is compiled.

### PCA10040 - Cover

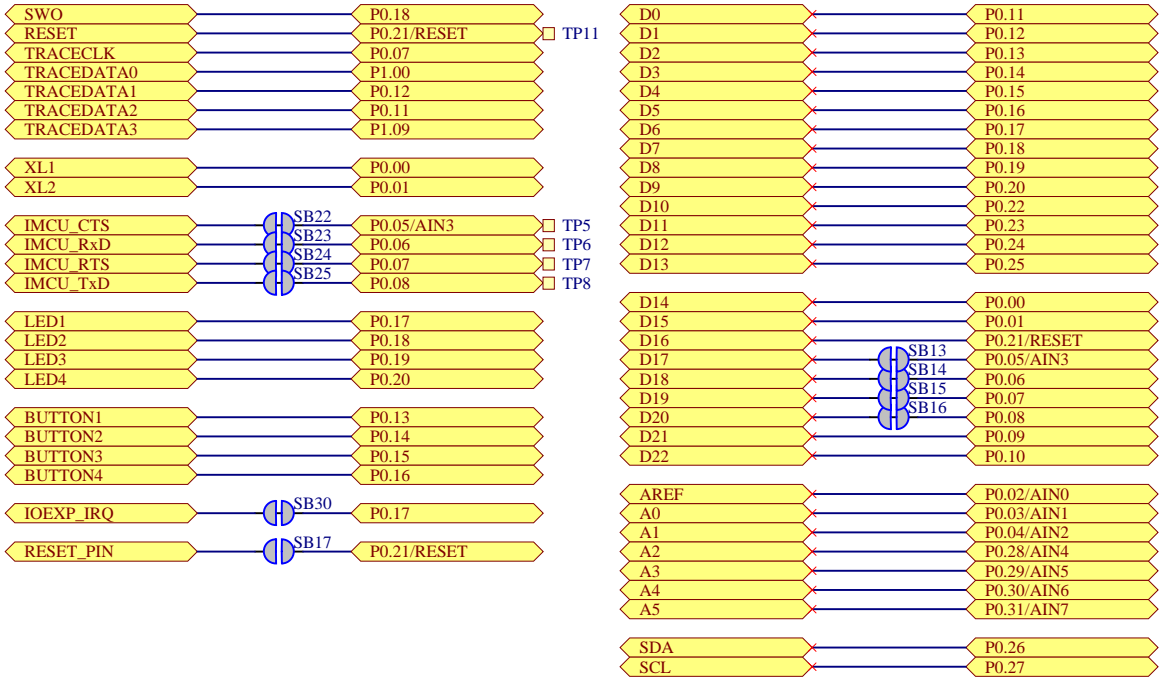
Size	Project Number	Revision	
A3	4397	1.2.4	
Date: 12.12.2017		Sheet 1 of 7	
File: pca10040_sheet1_cover.SchDoc		Drawn By: KJP/RUBR	

P0.00	P0.00
P0.01	P0.01
P0.02/AIN0	P0.02
P0.03/AIN1	P0.03
P0.04/AIN2	P0.04
P0.05/AIN3	P0.05
P0.06	P0.06
P0.07	P0.07
P0.08	P0.08
P0.09/NFC1	P0.09/NFC1
P0.10/NFC2	P0.10/NFC2
P0.11	P0.11
P0.12	P0.12
P0.13	P0.13
P0.14	P0.14
P0.15	P0.15
P0.16	P0.16
P0.17	P0.17
P0.18	P0.18
P0.19	P0.19
P0.20	P0.20
P0.21/RESET	P0.21
P0.22	P0.22
P0.23	P0.23
P0.24	P0.24
P0.25	P0.25
P0.26	P0.26
P0.27	P0.27
P0.28/AIN4	P0.28
P0.29/AIN5	P0.29
P0.30/AIN6	P0.30
P0.31/AIN7	P0.31
SWDIO	SWDIO
SWDCLK	SWDCLK



Title PCA10040 - nRF Radio			
Size A4	Project Number 4397	Revision 1.2.4	
Date: 12.12.2017		Sheet 2 of 7	
File: pca10040_sheet2_radio.SchDoc		Drawn By: KJP/RUBR	

GPIO pin mapping



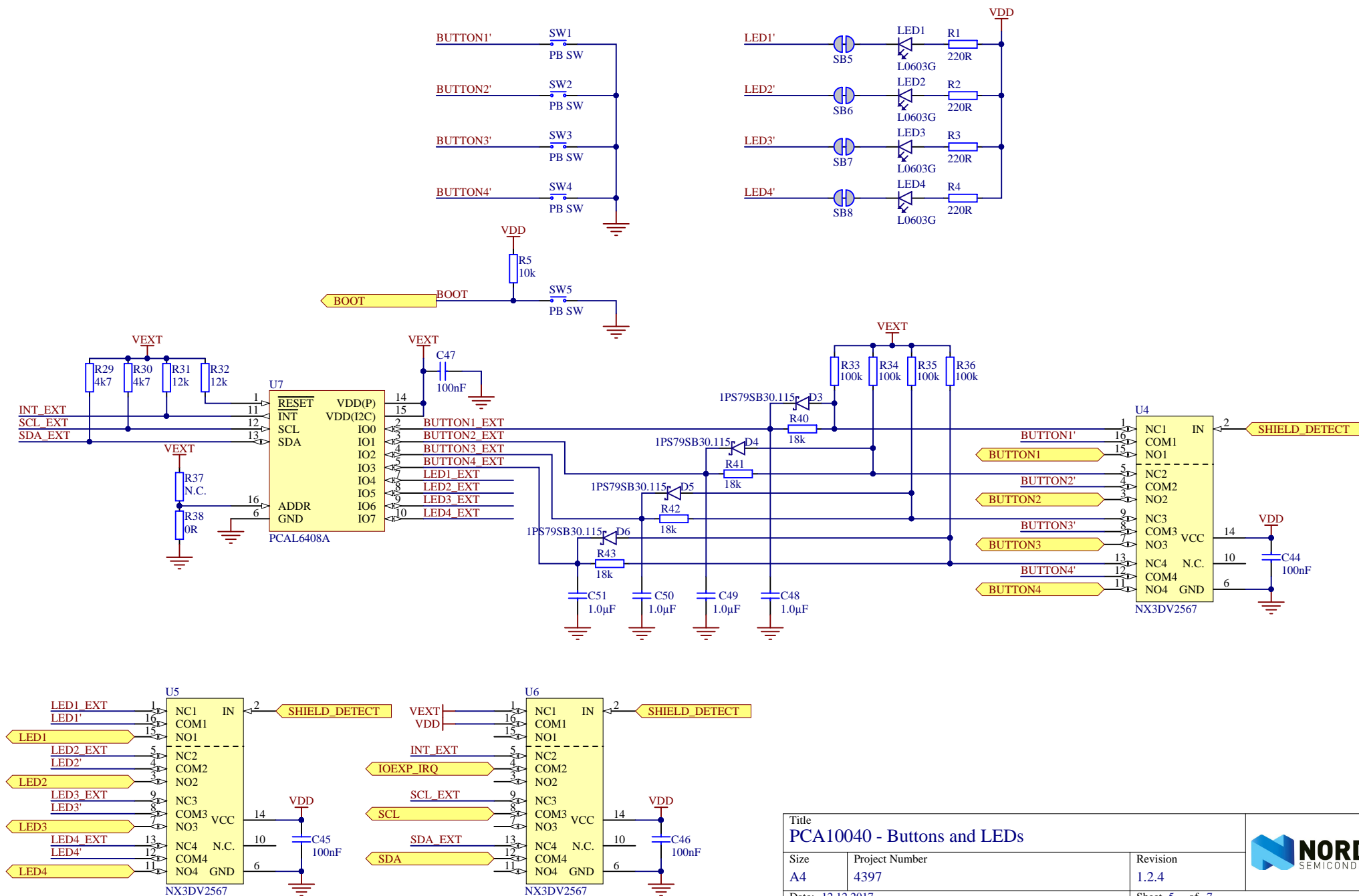


1


2

3

4



# PCA10040 - Buttons and LEDs

Size	Project Number	Revision	
A4	4397	1.2.4	
Date: 12.12.2017	Sheet 5 of 7	Drawn By: KJP/RUBR	

1

2

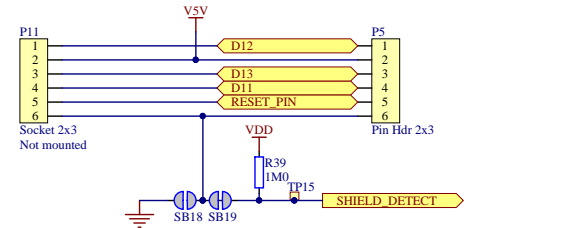
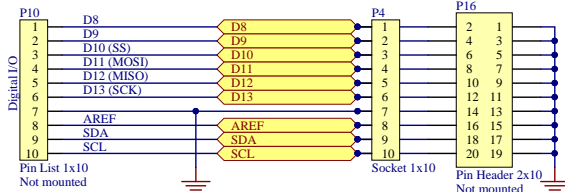
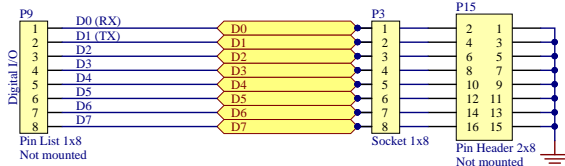
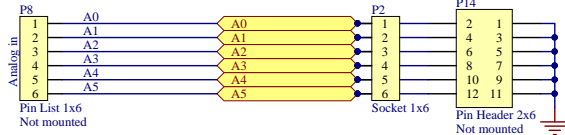
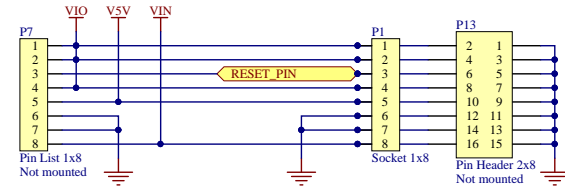
3

4

## Arduino Interface Connectors

Bottom Connectors

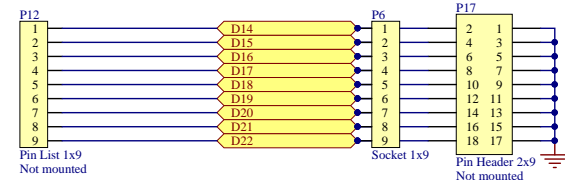
Top connectors



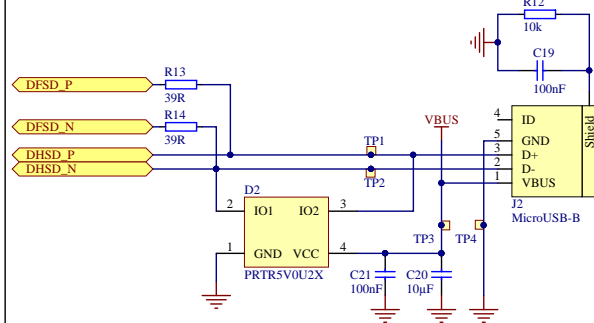
## Auxiliary Connectors

Bottom Connectors

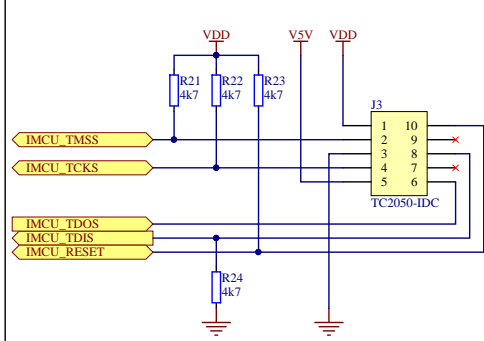
Top connectors



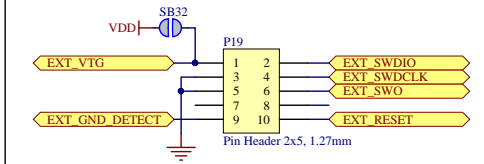
## Interface MCU USB Connector



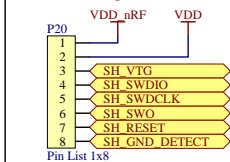
## Interface MCU Programming Connector



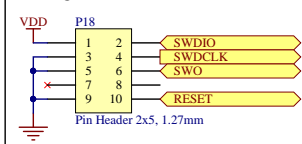
## Debug OUT Connector



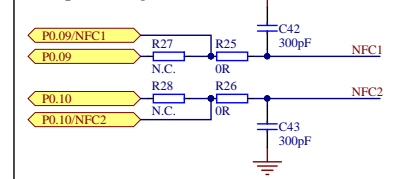
## Shield Debug and Current measurement Connector



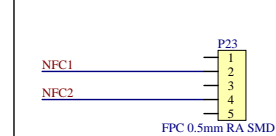
## Debug IN Connector



## NFC pin configuration

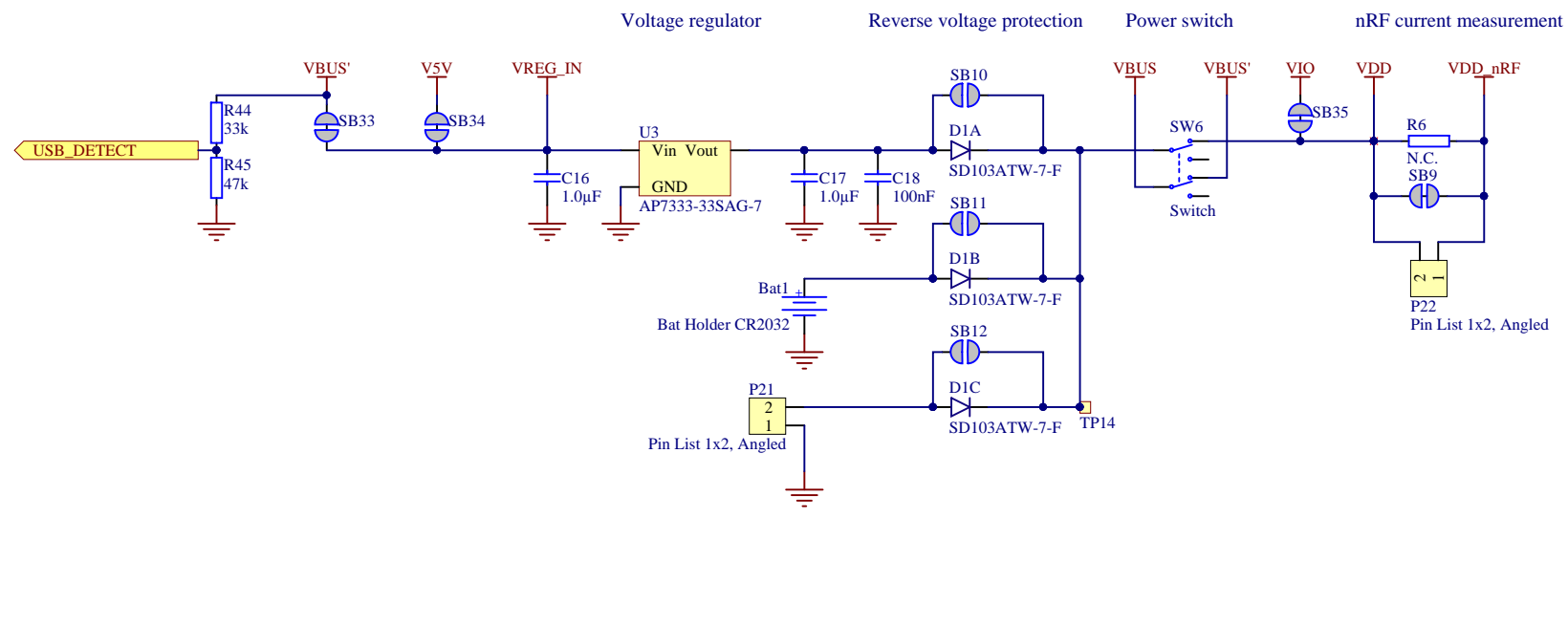



## NFCT Antenna Connector



## PCA10040 - Connectors

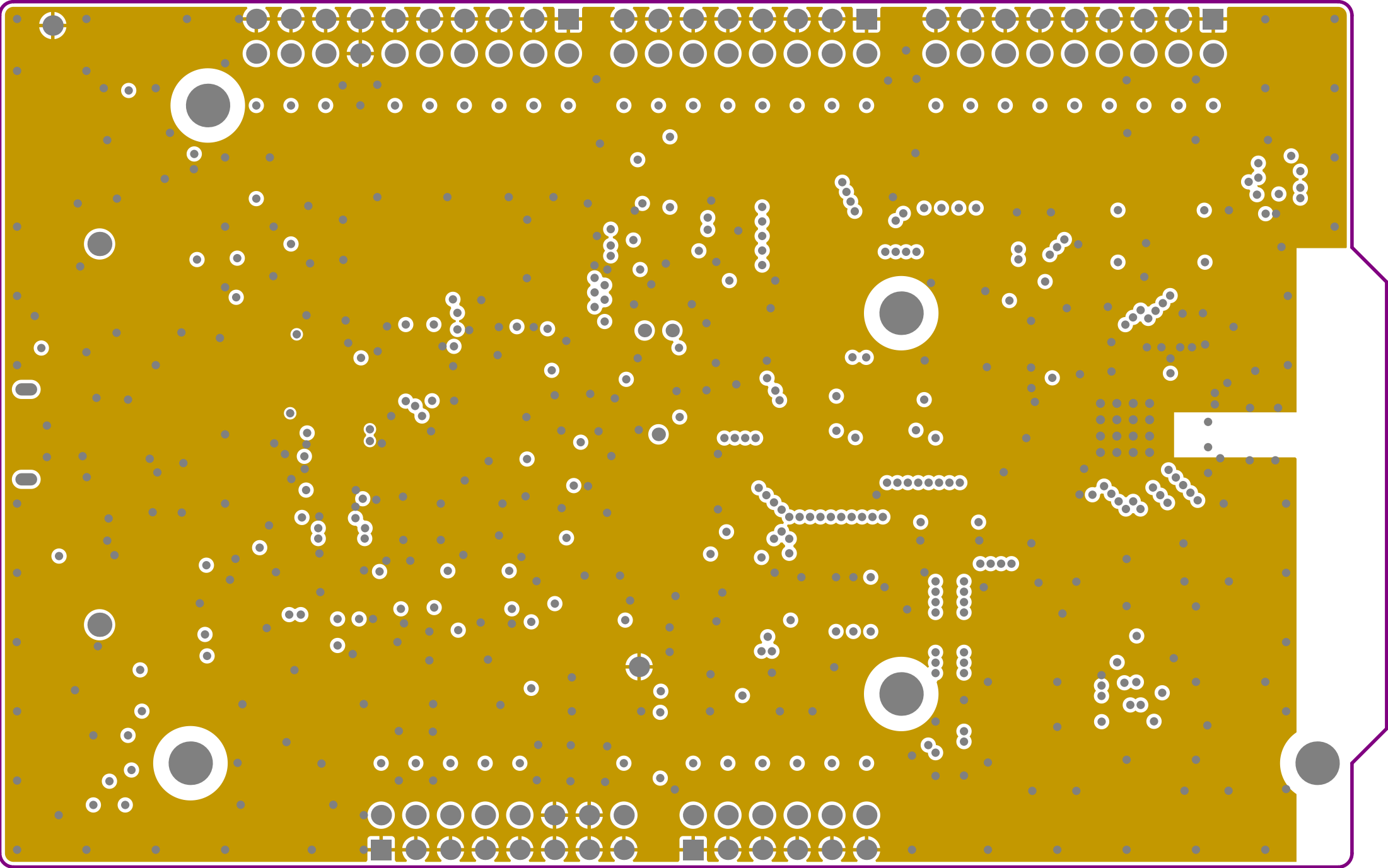
Size	Project Number	Revision	
A3	4397	1.2.4	
Date: 12.12.2017		Sheet 6 of 7	
File: pca10040_sheet6_connectors.SchDoc		Drawn By: KJP/RUBR	

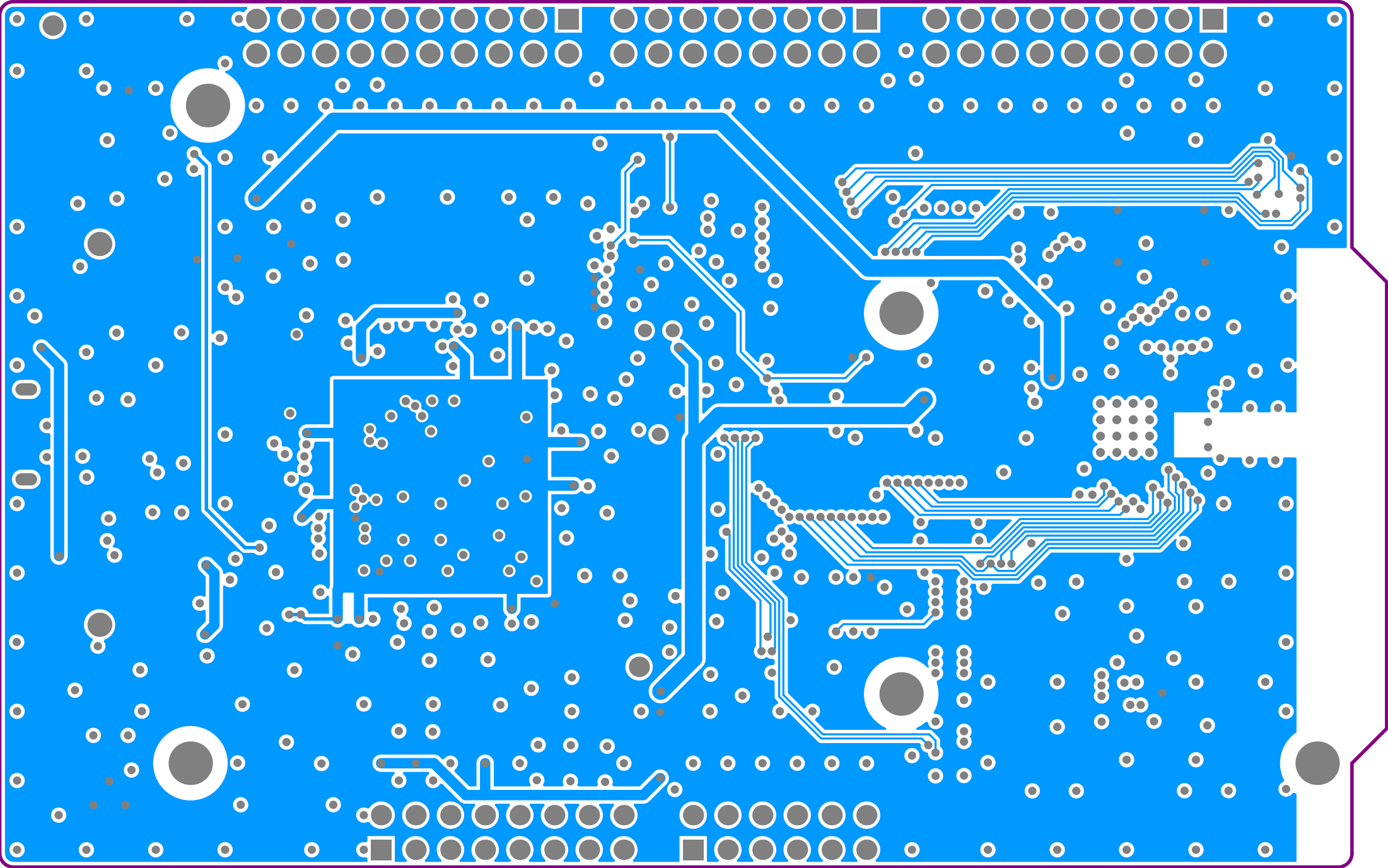


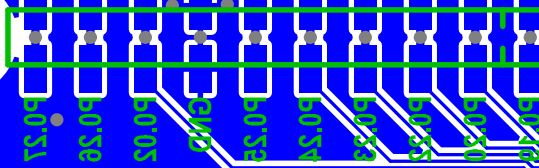
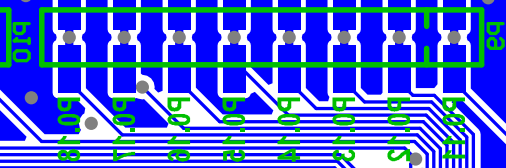
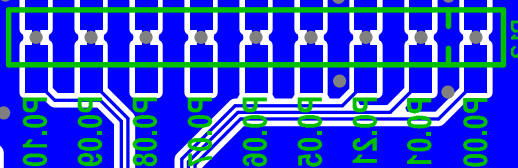
Title PCA10040 - Power Supply			
Size A4	Project Number 4397	Revision 1.2.4	
Date: 12.12.2017			Sheet 7 of 7
File: pca10040_sheet7_power_supply.SchDoc			Drawn By: KJP/RUBR





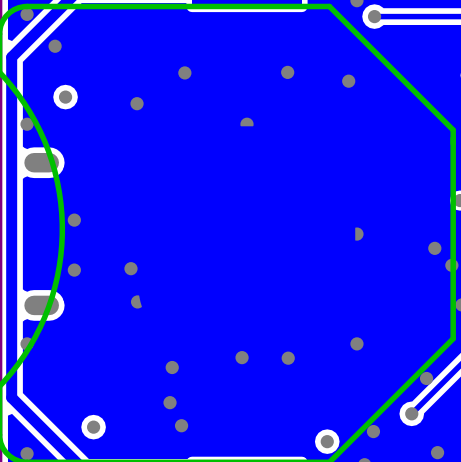
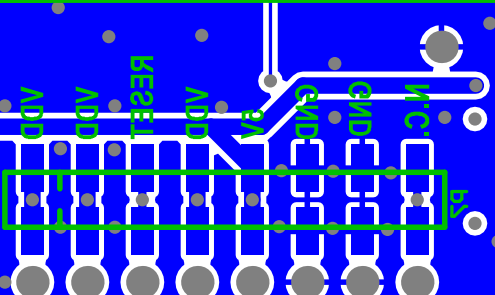
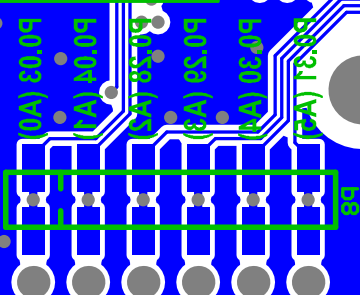
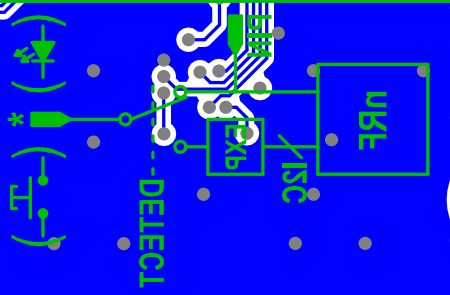




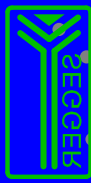


P0.31	RESET	SB1A	GPIO	HW	IO EXPANDER
P0.30	LED 4	SB8			
P0.10	LED 3	SB1			
P0.18	LED 5	SB9			
P0.12	LED 1	SB6			
P0.16	Button 4				
P0.14	Button 3				
P0.18	Button 1				

P0.31	RESET	SB1A	GPIO	HW	IO EXPANDER
P0.30	LED 4	SB8			
P0.10	LED 3	SB1			
P0.18	LED 5	SB9			
P0.12	LED 1	SB6			
P0.16	Button 4				
P0.14	Button 3				
P0.18	Button 1				



enabled  
mped  
ARM



www.segger.com  
J-Link Technology

