


Nordic Semiconductor ASA

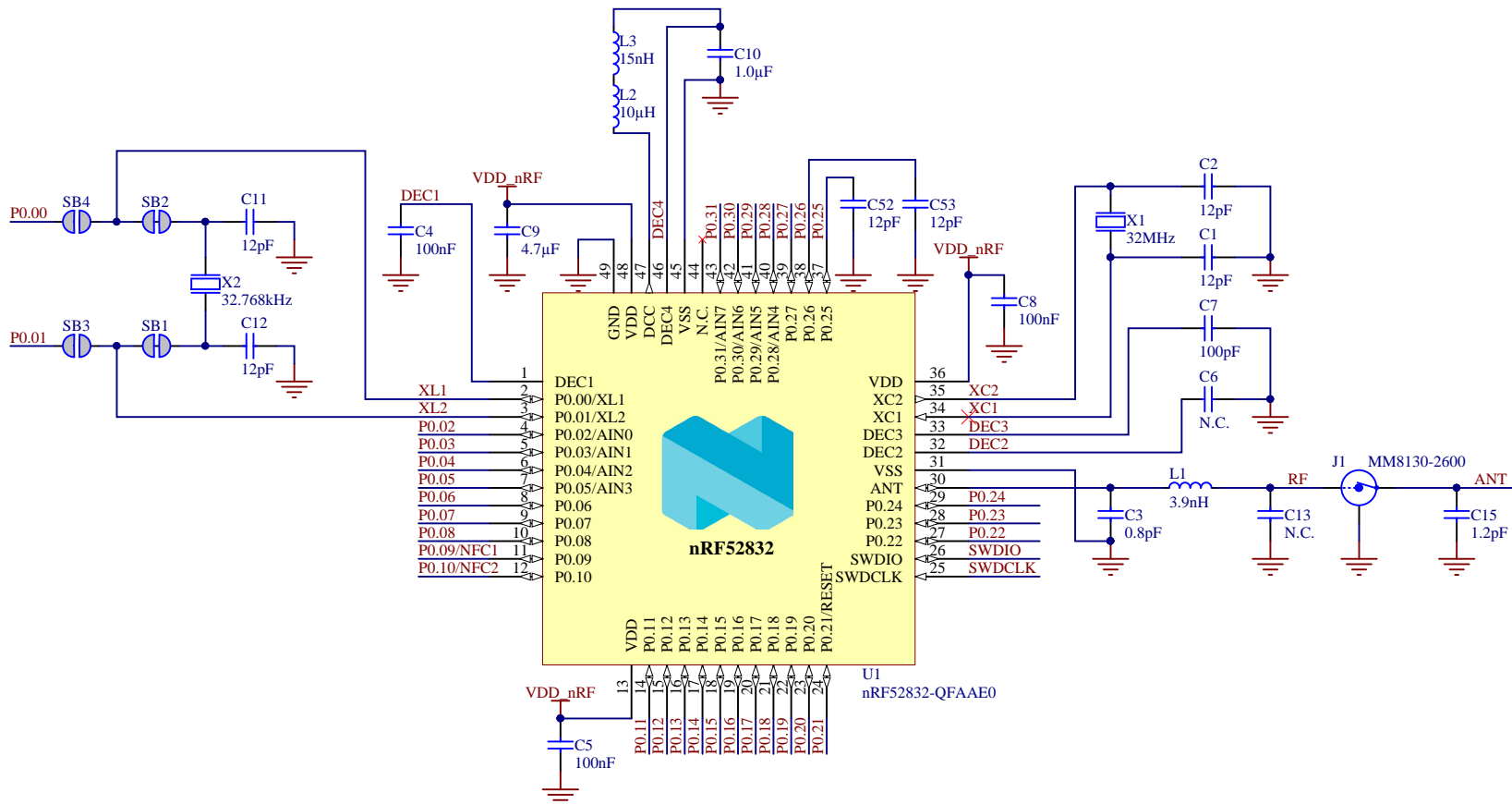
nRF52832 Bluetooth Smart/ANT/2.4GHz RF Development Board (PCA10040)


Sheet 1:	Cover
Sheet 2:	nRF Radio
Sheet 3:	Pin Map
Sheet 4:	Interface MCU
Sheet 5:	Buttons and LEDs
Sheet 6:	Connectors
Sheet 7:	Power Supply

✗ The No ERC object is a design directive.
This directive is placed on a node in the circuit to suppress reported warnings and/or error violation conditions that are detected when the schematic project is compiled.

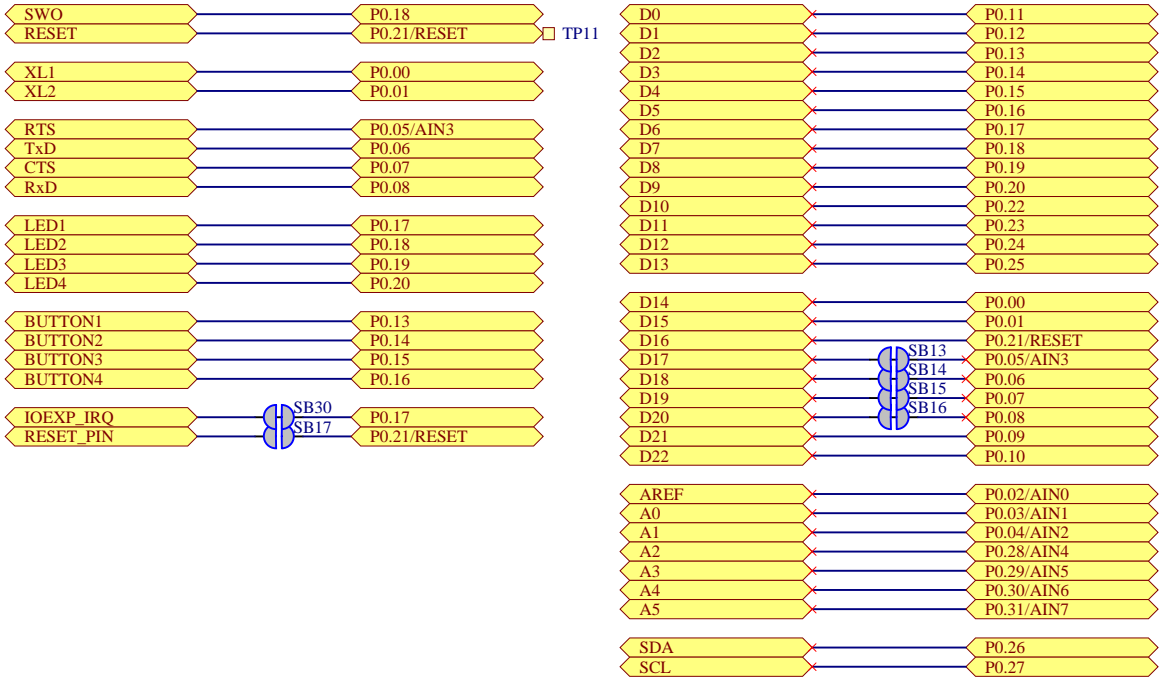
Cover			
Size	Project Number	Revision	
A3	4397	2.0.0	
Date: 11.02.2019		Sheet 1 of 7	
File: sheet1_cover SchDoc		Drawn By: KJP/RUBR/GETR	


P0.00	P0.00
P0.01	P0.01
P0.02/AIN0	P0.02
P0.03/AIN1	P0.03
P0.04/AIN2	P0.04
P0.05/AIN3	P0.05
P0.06	P0.06
P0.07	P0.07
P0.08	P0.08
P0.09/NFC1	P0.09/NFC1
P0.10/NFC2	P0.10/NFC2
P0.11	P0.11
P0.12	P0.12
P0.13	P0.13
P0.14	P0.14
P0.15	P0.15
P0.16	P0.16
P0.17	P0.17
P0.18	P0.18
P0.19	P0.19
P0.20	P0.20
P0.21/RESET	P0.21
P0.22	P0.22
P0.23	P0.23
P0.24	P0.24
P0.25	P0.25
P0.26	P0.26
P0.27	P0.27
P0.28/AIN4	P0.28
P0.29/AIN5	P0.29
P0.30/AIN6	P0.30
P0.31/AIN7	P0.31
SWDIO	SWDIO
SWDCLK	SWDCLK

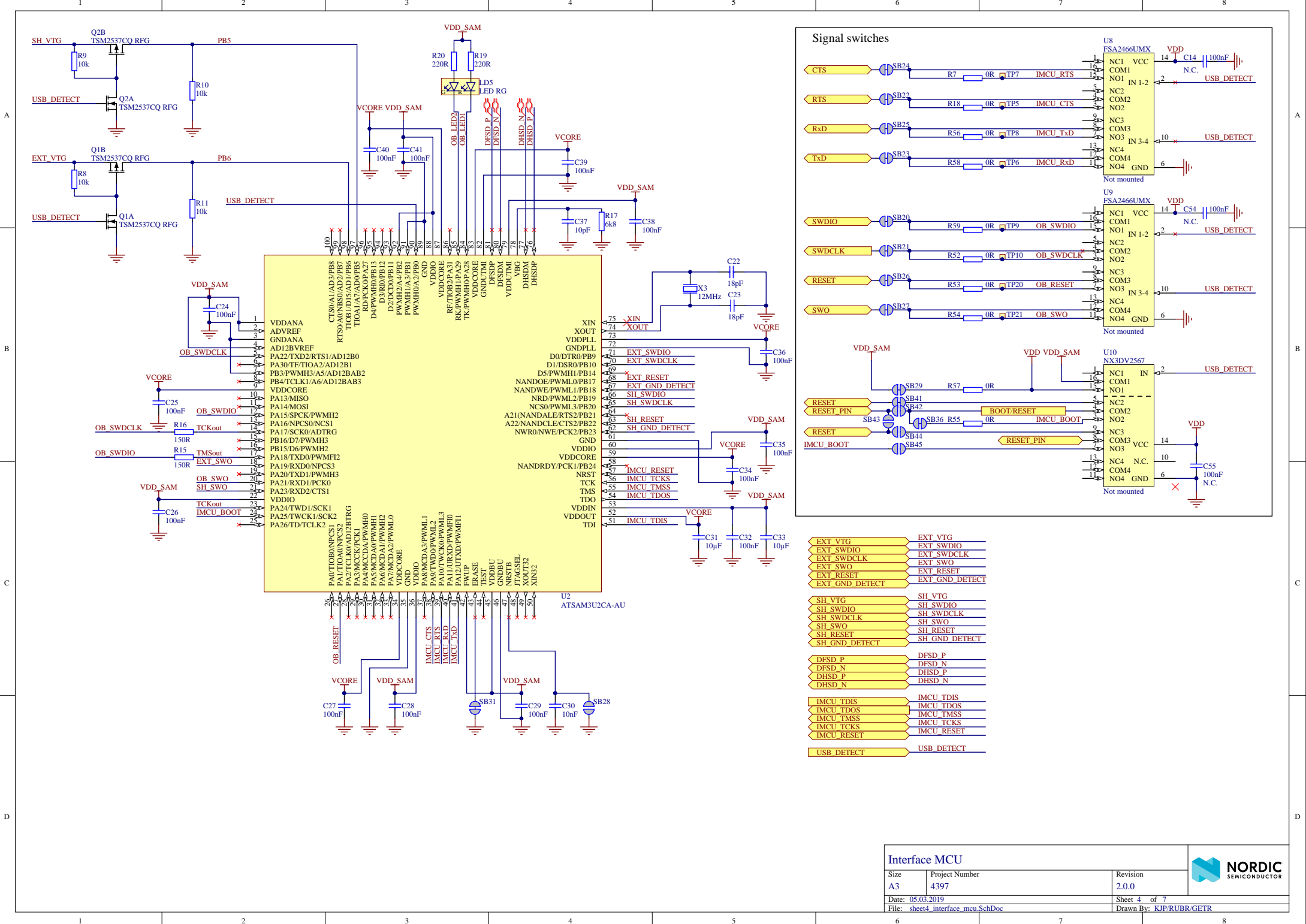


Title nRF Radio			
Size A4	Project Number 4397	Revision 2.0.0	
Date: 11.02.2019			Sheet 2 of 7
File: sheet2_radio.SchDoc			Drawn By: KJP/RUBR/GETR


GPIO pin mapping



Title Pin Map			
Size A4	Project Number 4397	Revision 2.0.0	
Date: 05.03.2019			Sheet 3 of 7
File: sheet3_pin_map.SchDoc			Drawn By: RUBR/GETR



Interface MCU

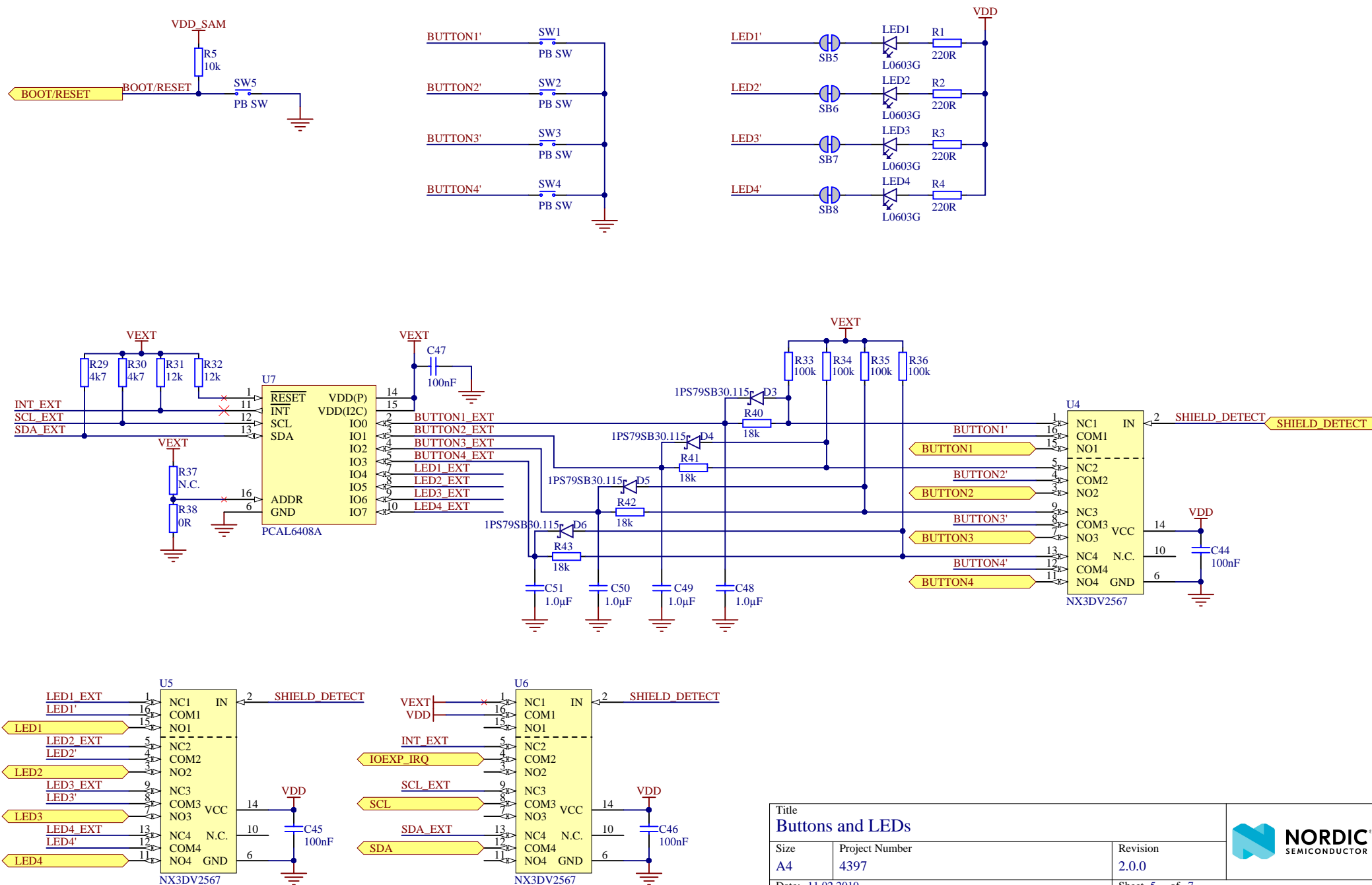
Size	Project Number	Revision	
A3	4397	2.0.0	
Date: 05.03.2019		Sheet 4 of 7	
File: sheet4_interface_mcu.SchDoc		Drawn By: KJP/RUBR/GETR	

1

2

3

4



Buttons and LEDs

Size
A4

Project Number
4397

Revision
2.0.0

Date: 11.02.2019
File: sheet5_buttons_and_leds.SchDoc

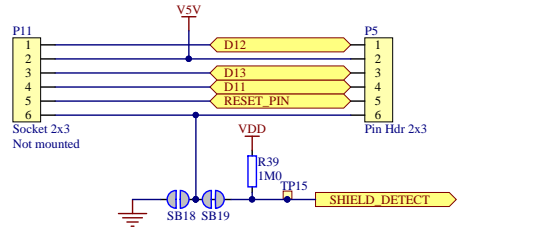
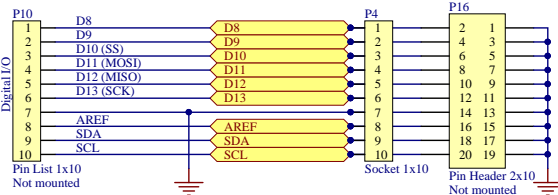
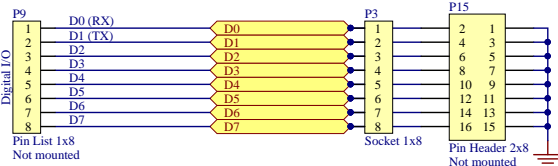
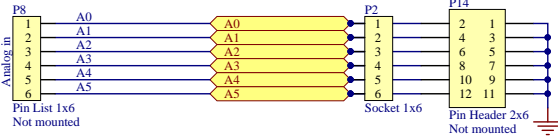
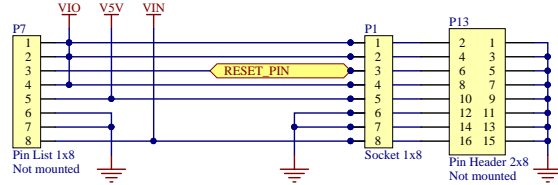
Sheet 5 of 7
Drawn By: KJP/RUBR/GETR



Arduino Interface Connectors

Bottom Connectors

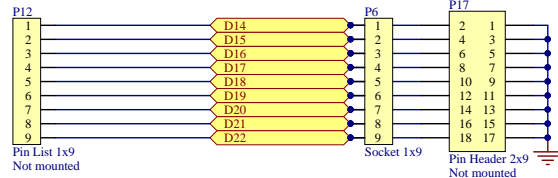
Top connectors



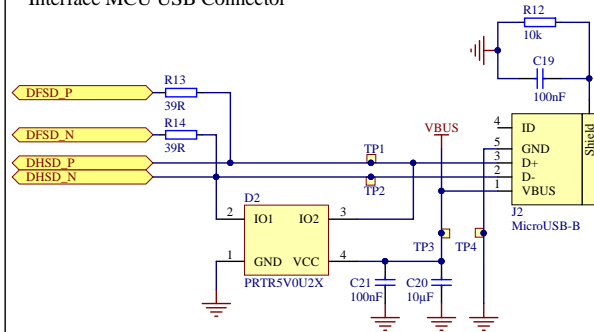
Auxiliary Connectors

Bottom Connectors

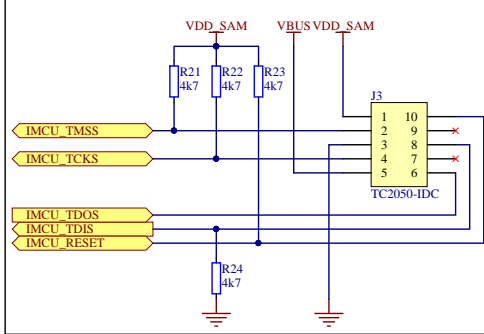
Top connectors



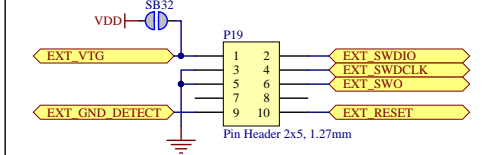
Interface MCU USB Connector



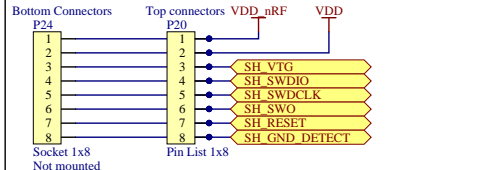
Interface MCU Programming Connector



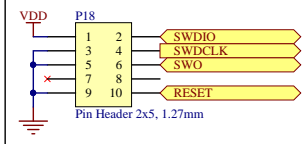
Debug OUT Connector



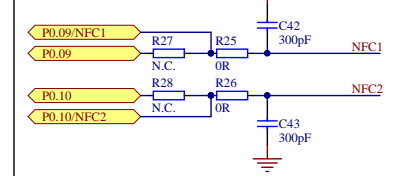
Shield Debug and Current measurement Connector



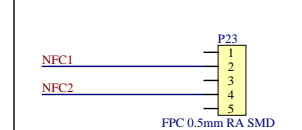
Debug IN Connector



NFC pin configuration



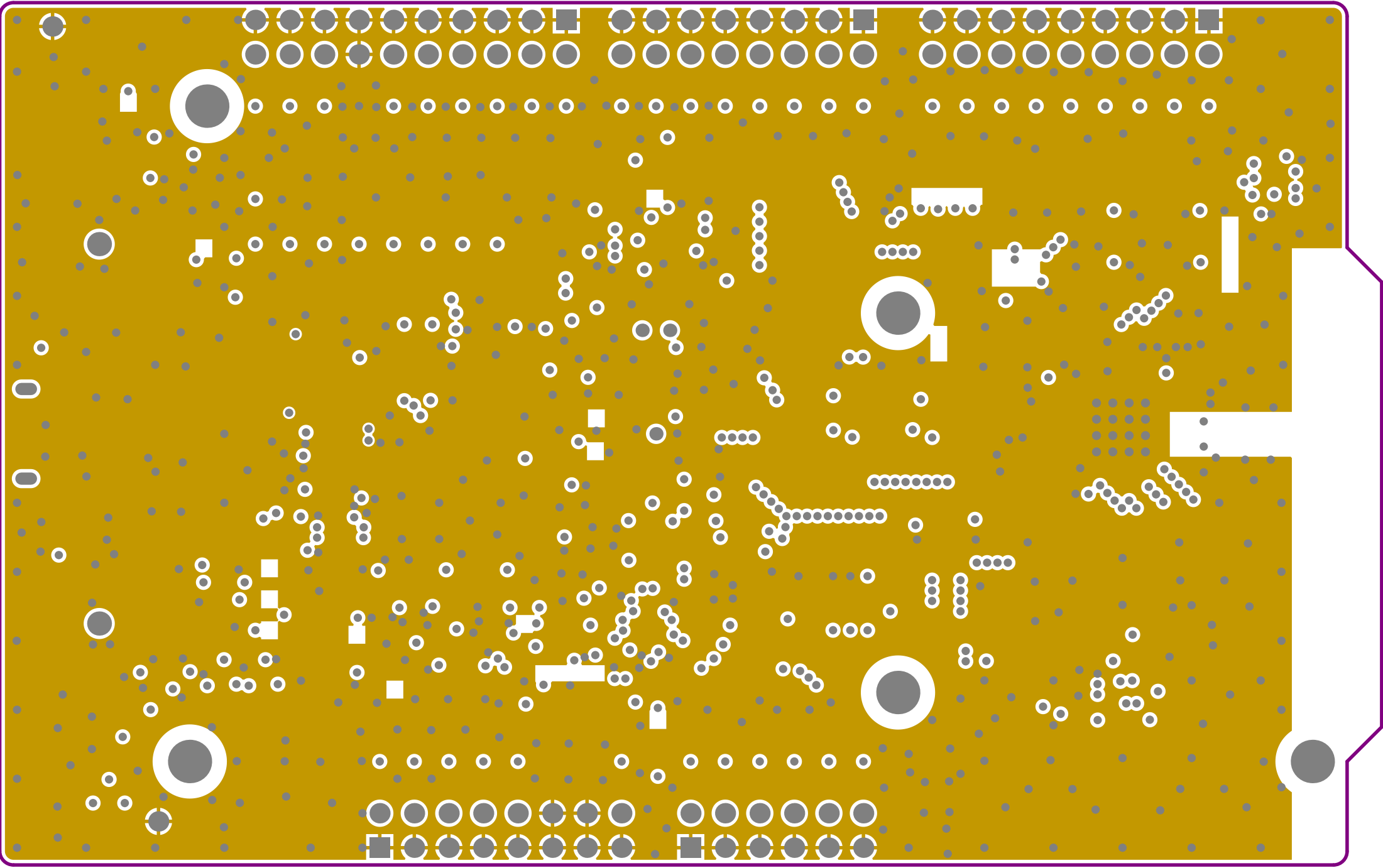
NFCT Antenna Connector

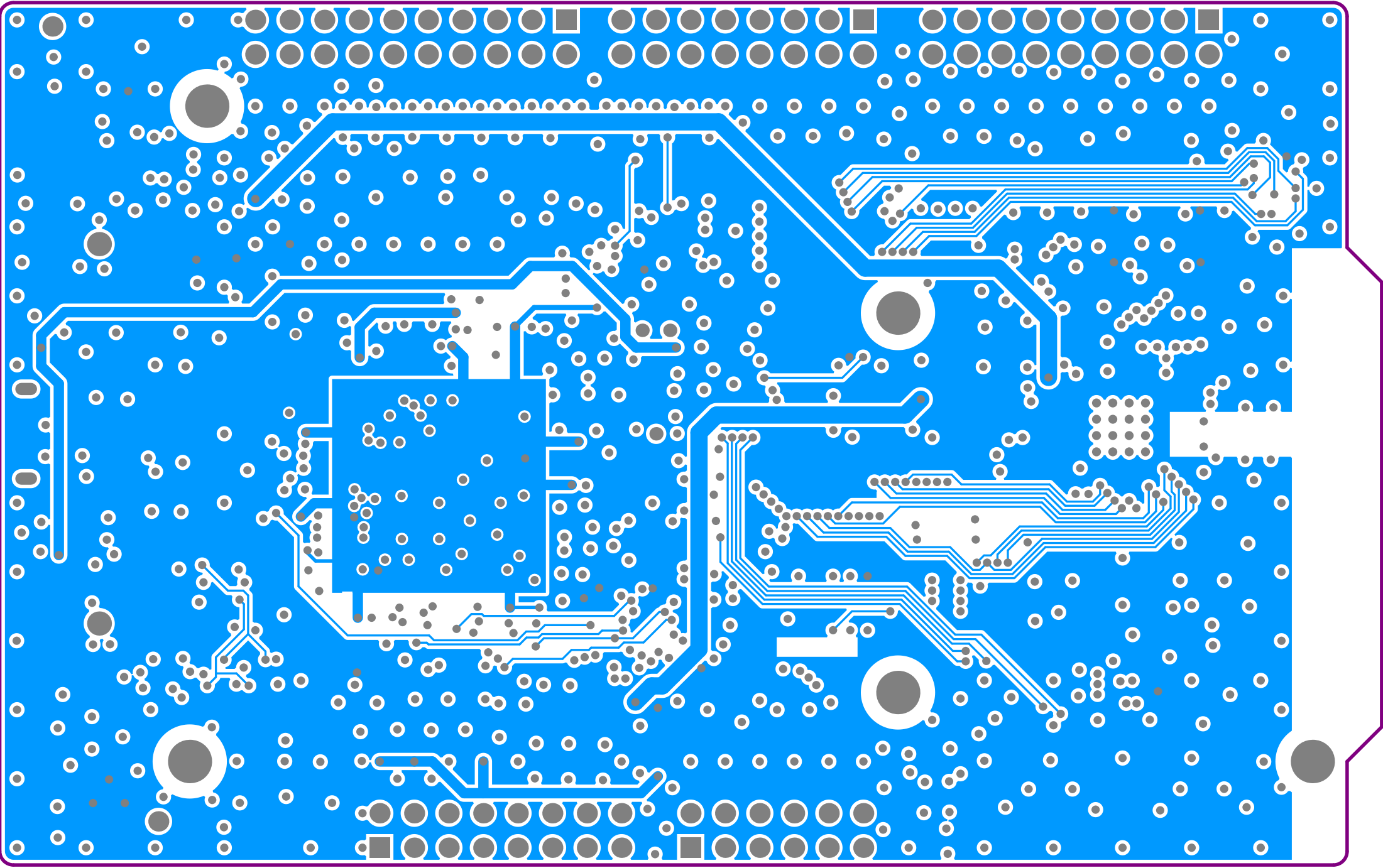


Connectors

Size A3	Project Number 4397	Revision 2.0.0	
Date: 05.03.2019	Sheet 6 of 7		
File: sheet6_connectors.SchDoc	Drawn By: KJP/RUBR/GETR		



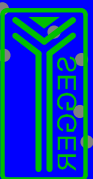






GPIO Pin	Function	Short	HW	I/O EXPANDER
P0.31	RESET	SB13	GPIO	PIN
P0.30	FED 4	SB8		
P0.16	FED 3	SB3		
P0.18	FED 5	SB6		
P0.15	FED 1	SB5		
P0.16	CONTROL 4			
P0.18	CONTROL 3			
P0.14	CONTROL 5			
P0.16	CONTROL 1			

GPIO Pin	Function	Short	HW
P0.18	MFCS		
P0.09	MFCS		
P0.08	RXT	SB14S5	GPIO
P0.02	TXD	SB14S4	
P0.02	RXT	SB13S5	LE WCN
P0.01	XLT	SB3	
P0.01	XLT	SB4	
P0.01	XLT	SB5	



www.segger.com
J-Linkarm Technology

ARM
J-Linkarm Technology

