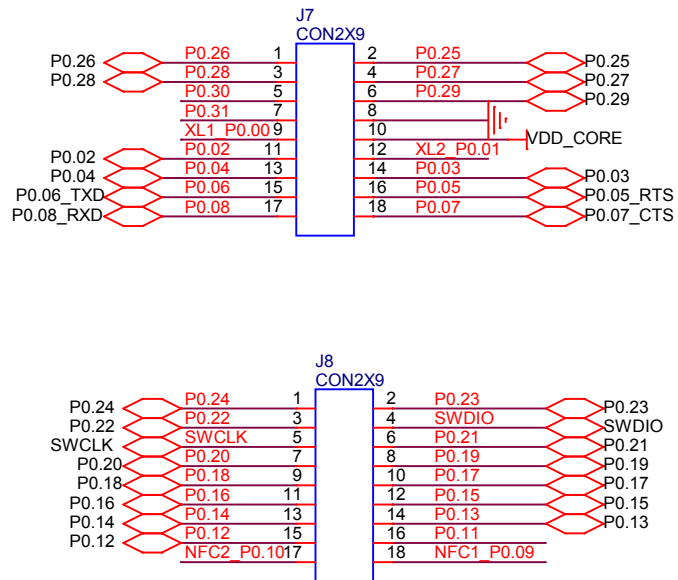
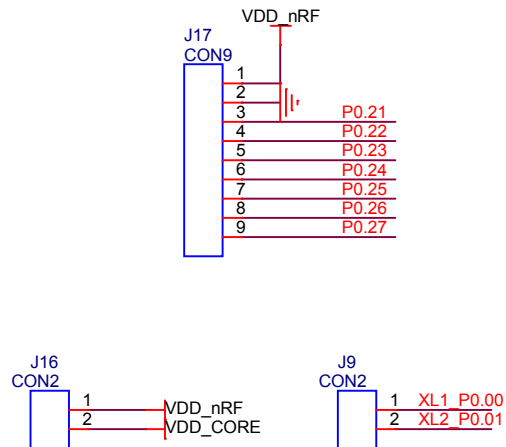


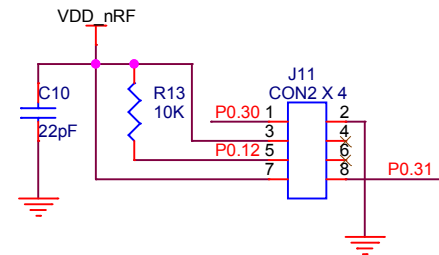
nRF51822模块接口



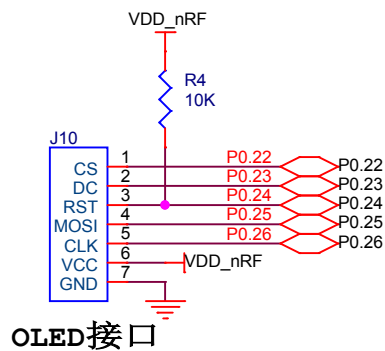
网络接口



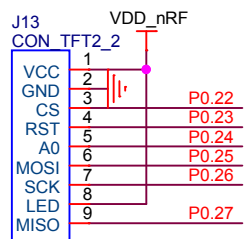
网络接口



液晶屏接口

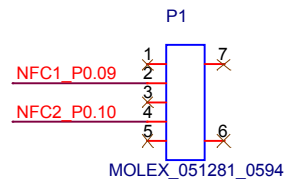


OLED接口

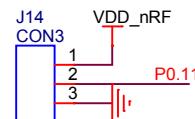


TFT液晶屏接口

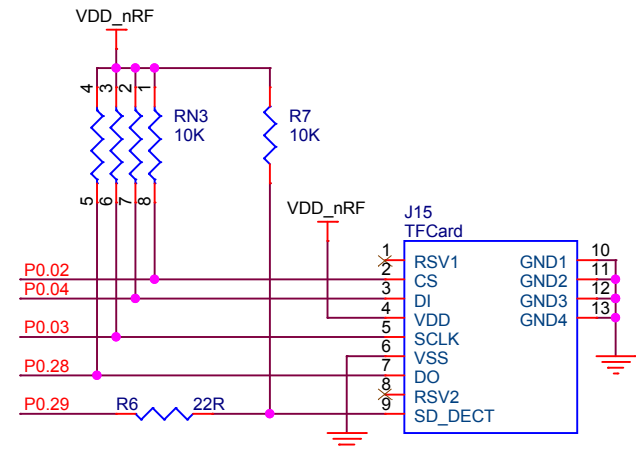
NFC Antenna



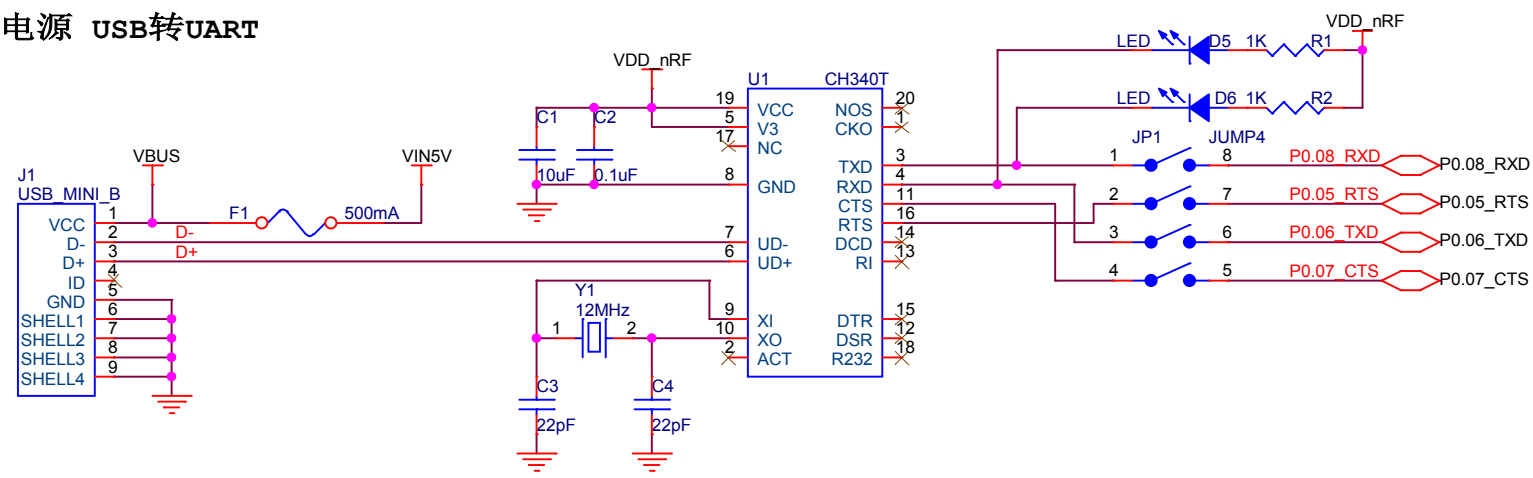
温湿度传感器 温度传感器



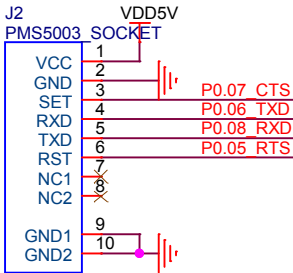
Micro SD卡座



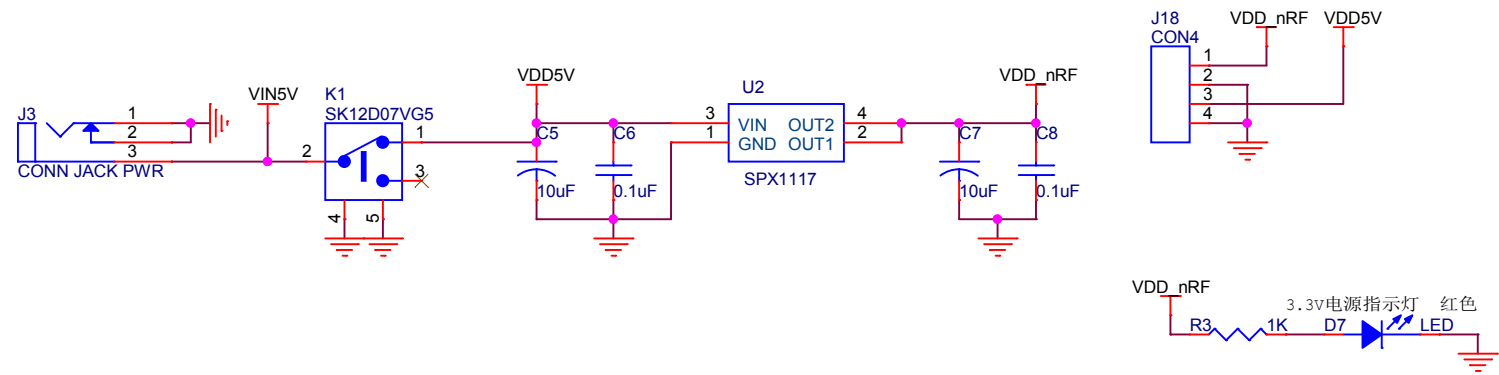
电源 USB转UART



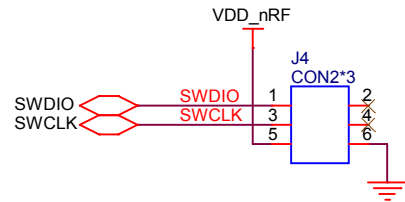
PM2.5接口



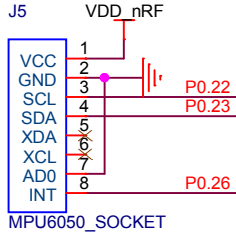
外部电源



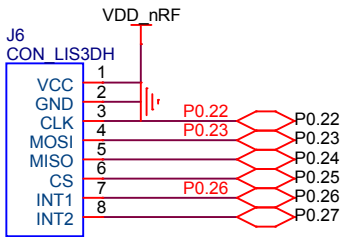
编程接口



MPU6050 6轴传感器接口



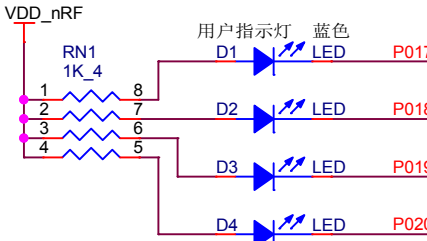
G_Sensor接口
LIS3DH LIS3DSH MPU9250



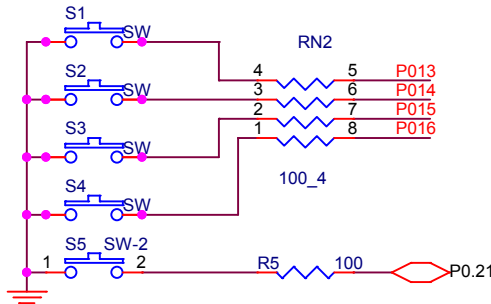
跳线



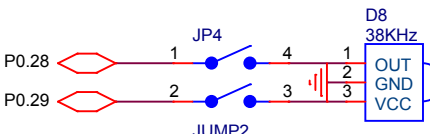
用户指示灯



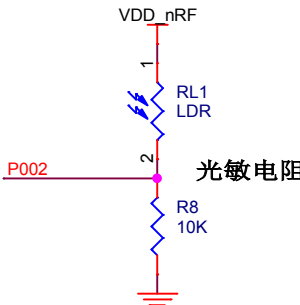
用户按键



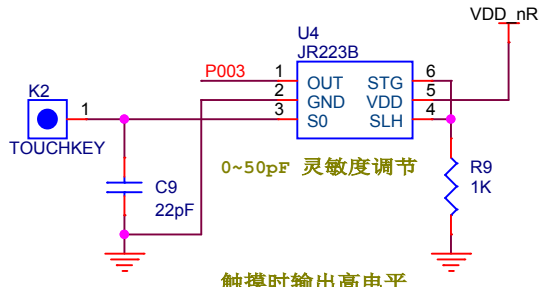
红外接收



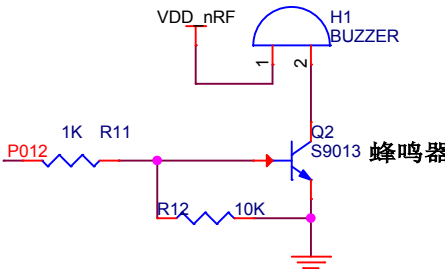
光敏检测



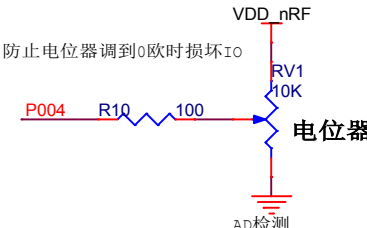
触摸按键



3V有源蜂鸣器



电位器 ADC检测



| | | | |
|------------------|---------------------------|-------|-----------|
| | | | |
| Title <Title> | | | |
| Size A4 | Document Number <Doc> | | Rev V1 |
| Date: | Friday, February 24, 2017 | Sheet | 3 of 3 |