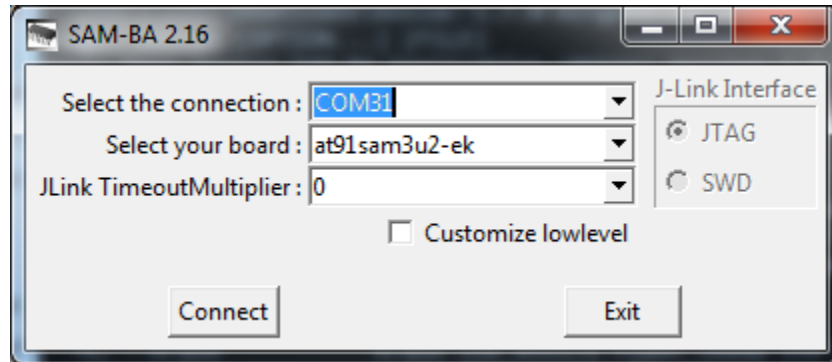


# Restore JLINK-lite debugger

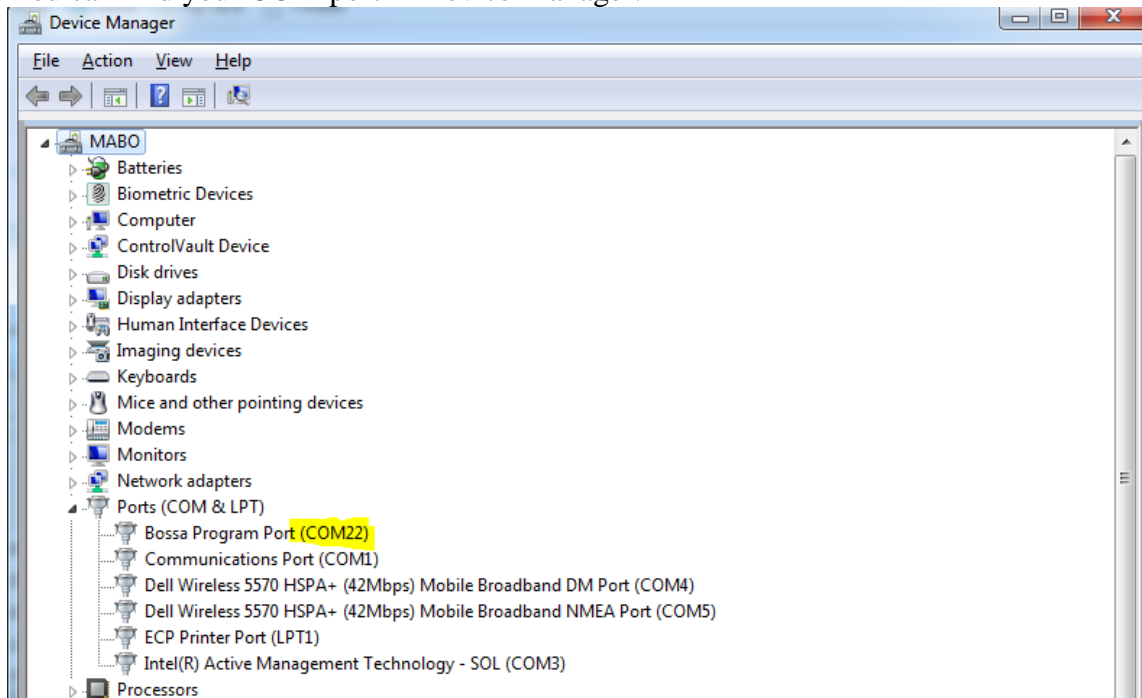
## Disclaimer:

This guide SHALL NOT be distributed freely and is only to be handed out on a case-by-case basis. It is an experimental solution and it might not work in all cases. Hence, it can potentially do more harm than good if it is released to the public.

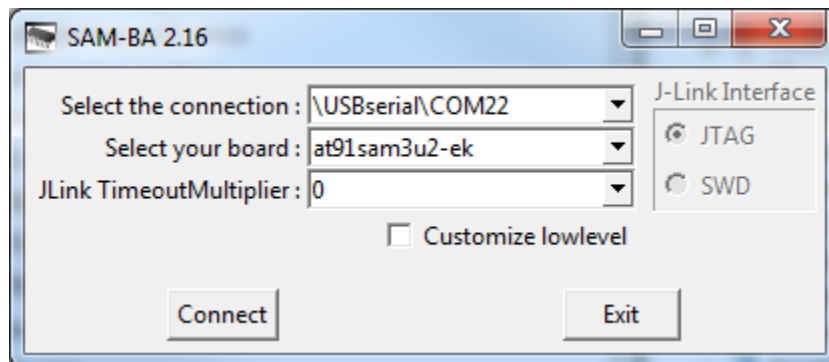
- Download and install SAM-BA programmer v2.16 from <http://www.atmel.com/tools/atmelsam-bain-systemprogrammer.aspx>
- Run SAM-BA
- Select the following settings and press connect. The “Select the connection” should be your device.



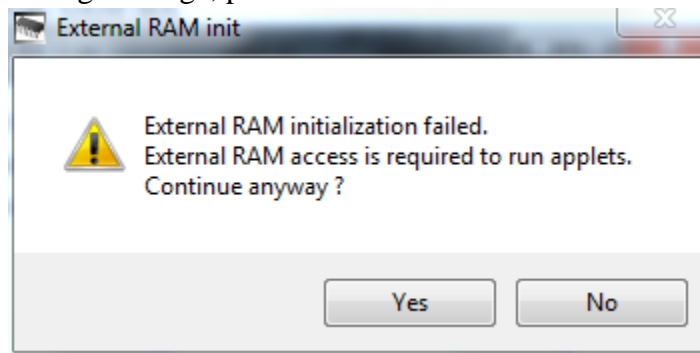
You can find your COM port in Device Manager:



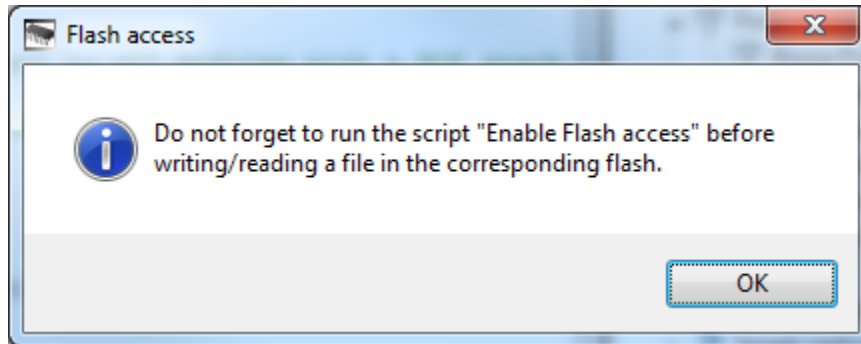
You might also need to put “\USBserial\” in front of the COM port number like this:



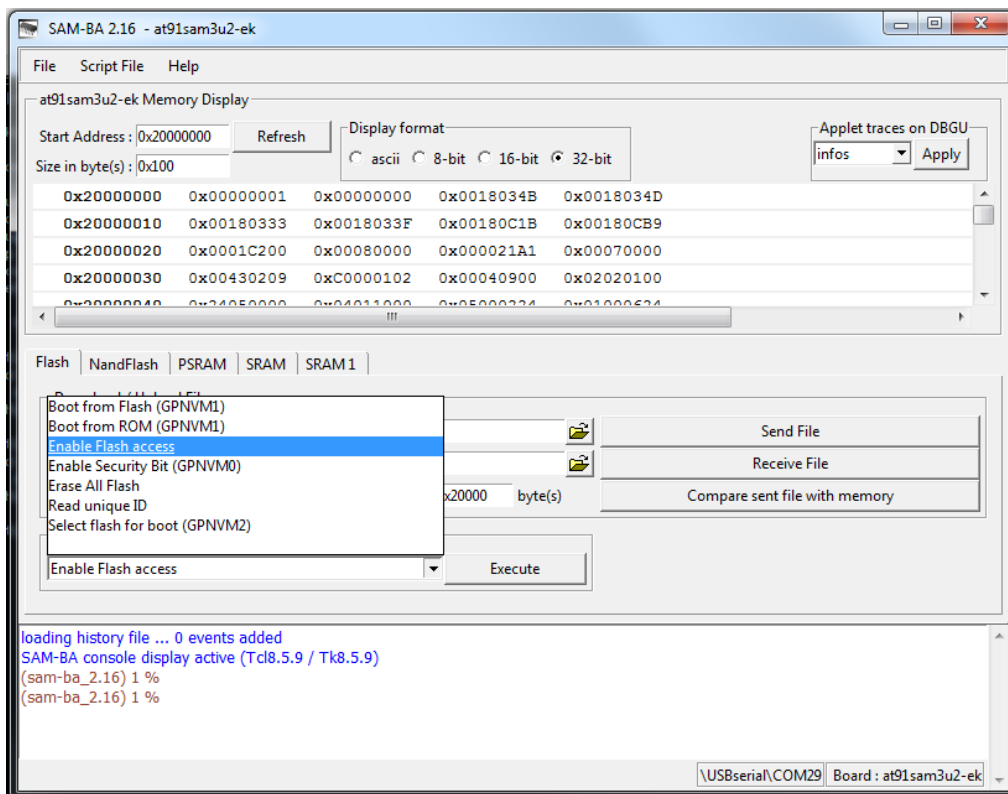
- If you get the following message, press “Yes” and continue.



- If you get the following message, press “OK” and continue.

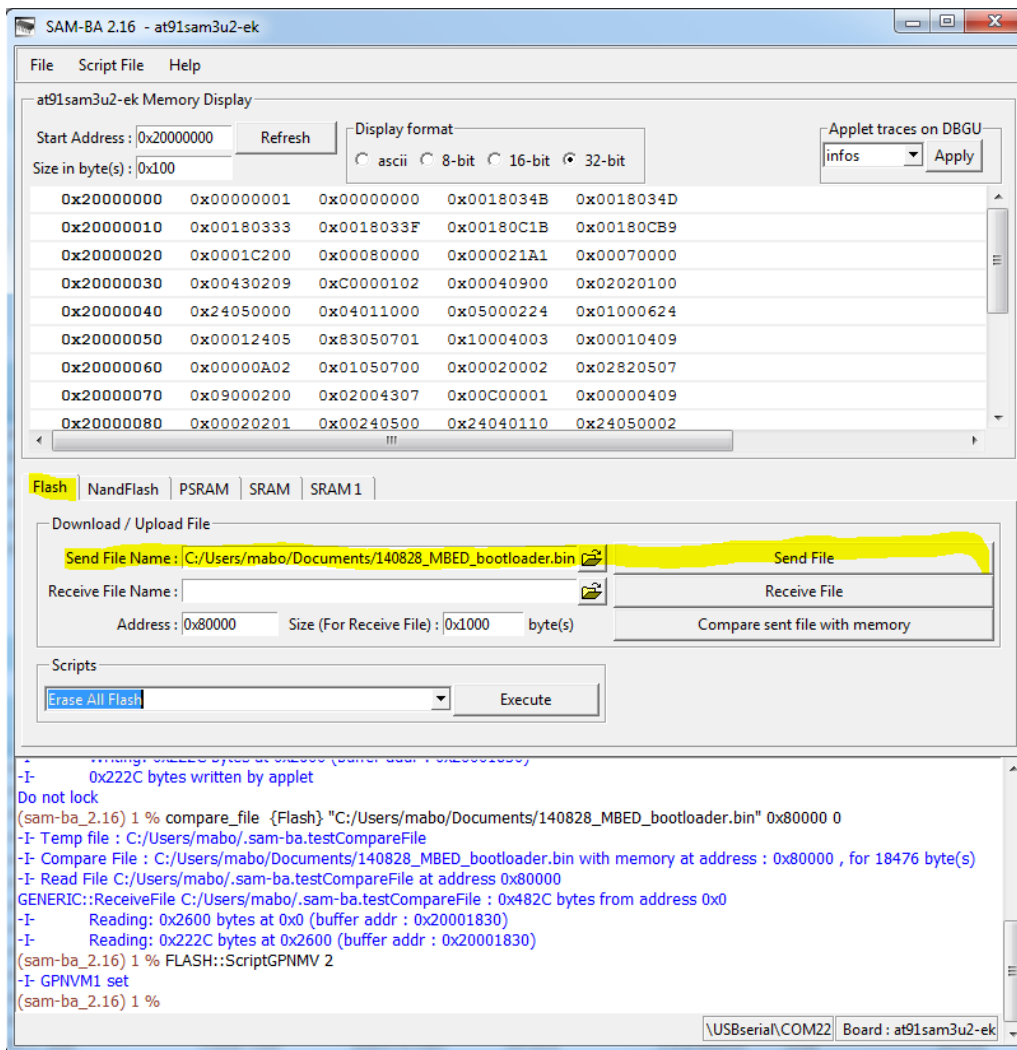


- The following window should now open. In the “Scripts” area:

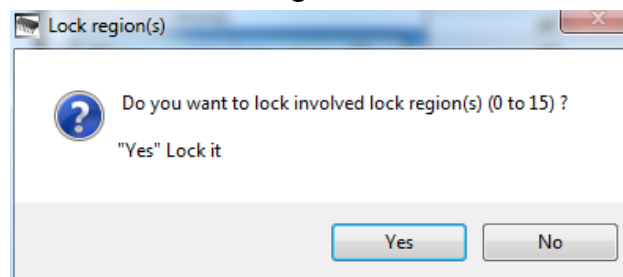


1. Select “Enable Flash Access” from the “Scripts” drop down list.
2. Press Execute
3. Select “Erase All Flash” from the “Scripts” drop down list.
4. Press Execute

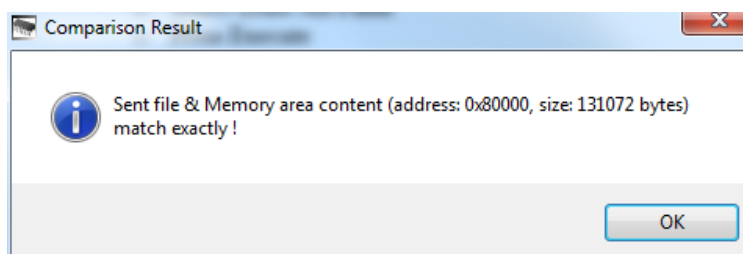
- Next, in Flash area:



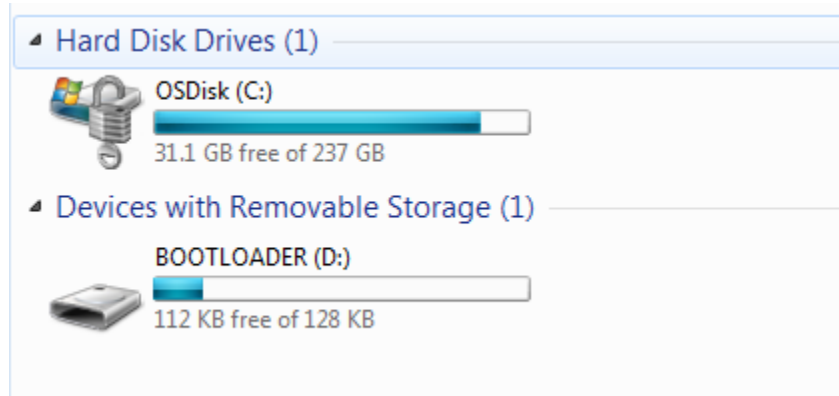
1. In “Send file name”, browse for the J-Link lite firmware (140828\_MBED\_bootloader.bin).
2. Press “Send File”
3. Press “No” when asked to lock the regions involved.



4. Press “Compare sent file with memory”
5. The content should match exactly, press “Ok”.



- In Scripts area:
  1. Select “Boot from Flash (GPNVM1)”
  2. Press execute.
- Power cycle the device, and it should come back as a JLINK again. If it doesn’t then try to power cycle the device while pressing the IF BOOT/RESET button. The device should then appear as a removable storage device called “BOOTLOADER”.



- If it shows up as JLINK, then everything should be back to normal. If it shows up as BOOTLOADER then continue with these steps:
  - Drag-and-drop the J-Link Interface MCU Firmware (J-Link OB-SAM3U128-V2-NordicSemi 170213.bin) onto the BOOTLOADER storage device and reboot the kit once more.
  - Now your kit should work as before.