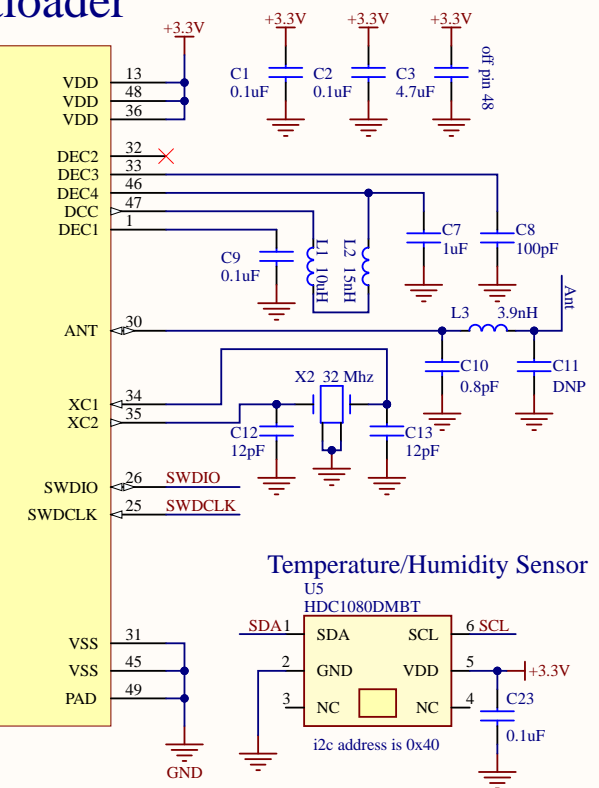
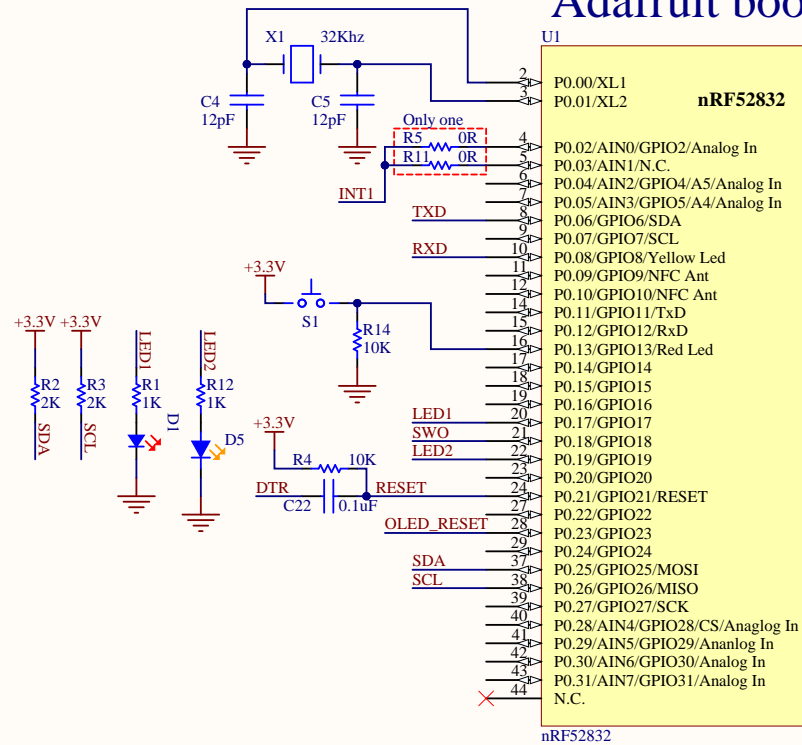
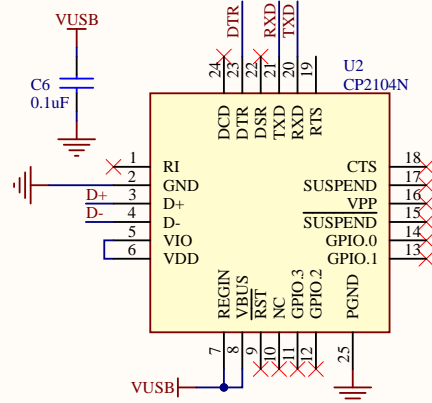
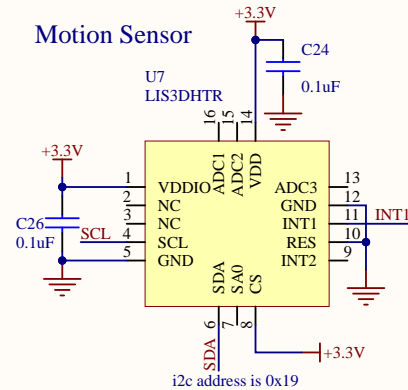


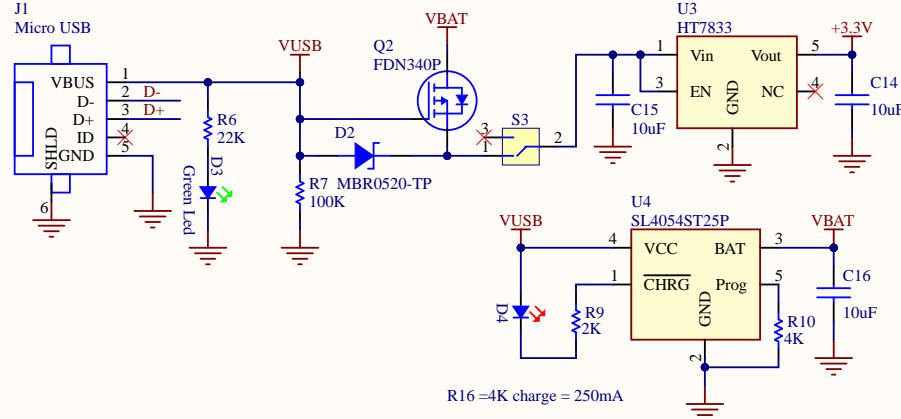
## Adafruit bootloader



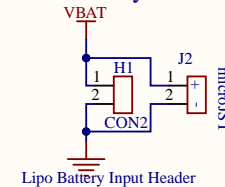
## Motion Sensor



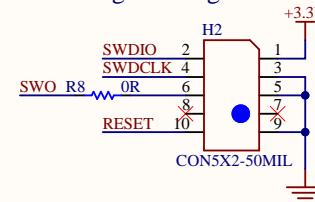
## USB, Power Supply & Charger



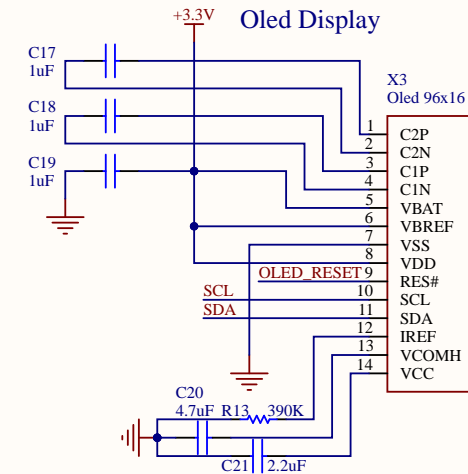
## LiPO Battery



## Programming Port



## Oled Display



Title: <b><i>Nrf52832 Test Board (Adafruit)</i></b>		
Size: <b>Letter</b>	Number: .	Revision: <b>2</b>
Date: <b>2020-11-20</b>	Time: <b>9:05:19 PM</b>	Sheet <b>1</b> of <b>1</b>

*Mike Rankin*  
@mikerankin

**Altium**  
*Designer*