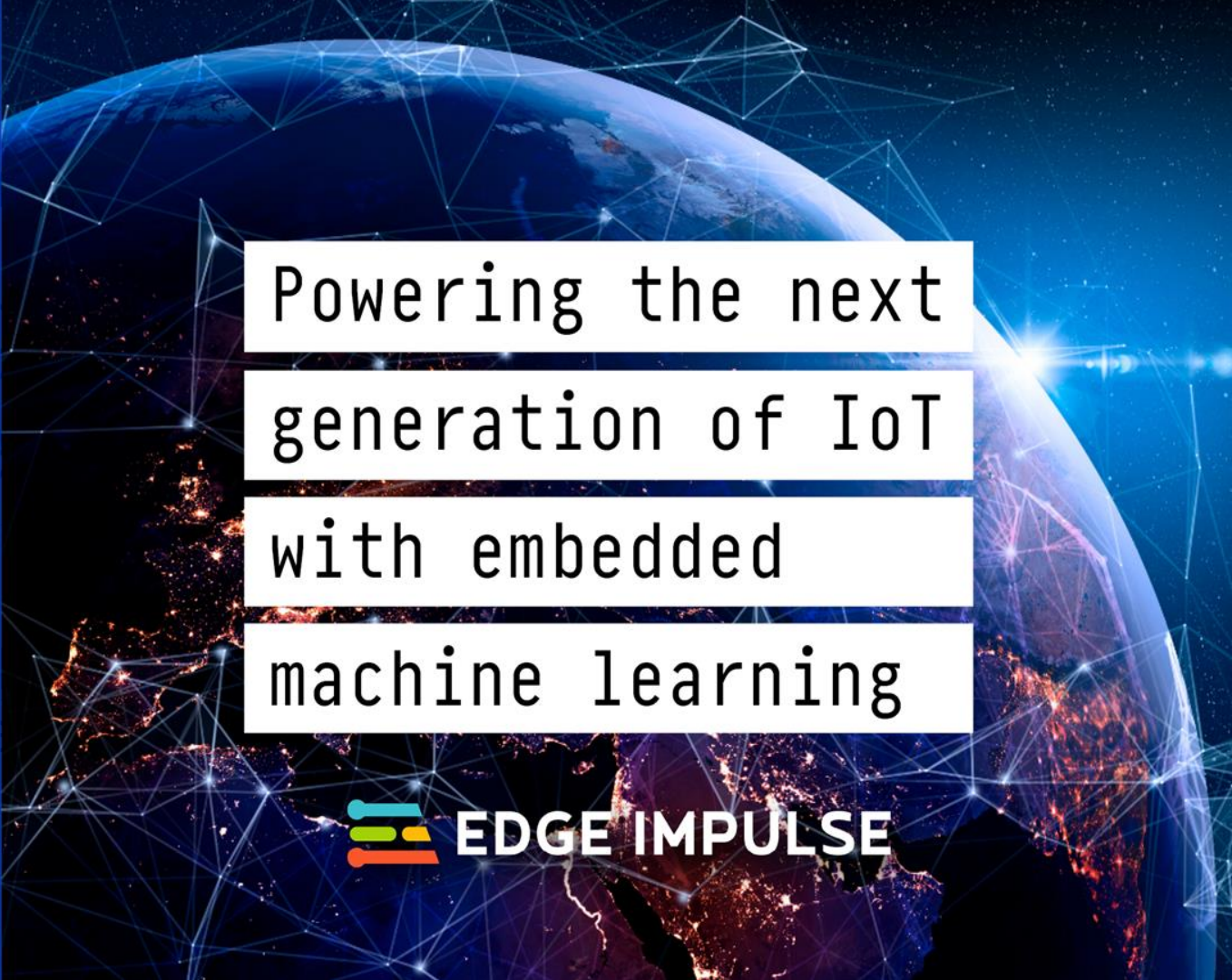




PARTNER
WEBINAR

NORDICTECH
WEBINARS



Powering the next
generation of IoT
with embedded
machine learning



EDGE IMPULSE

Today's hosts

Petter Myhre



Head of Product
Marketing



Zin Kyaw

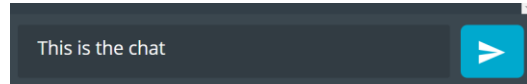
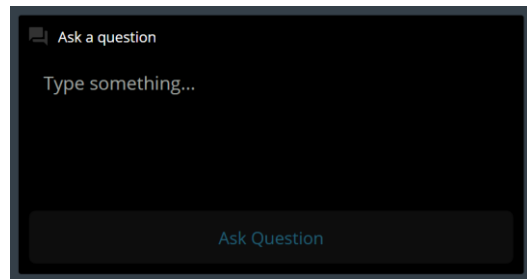


Senior User Success
Engineer



Practicalities

- Duration: 60 mins
- Questions are encouraged!
- Please type questions in the top of the right sidebar
 - All questions are anonymous
 - Try to keep them relevant to the topic
- We will answer questions towards the end
- The chat is not anonymous, and should **not** be used for questions
- If you have more questions:
 - Go to DevZone for Nordic related questions
 - hello@edgeimpulse.com for questions to Edge Impulse
- A recording of the webinar will be available together with the presentation at webinars.nordicsemi.com



{ DevZone

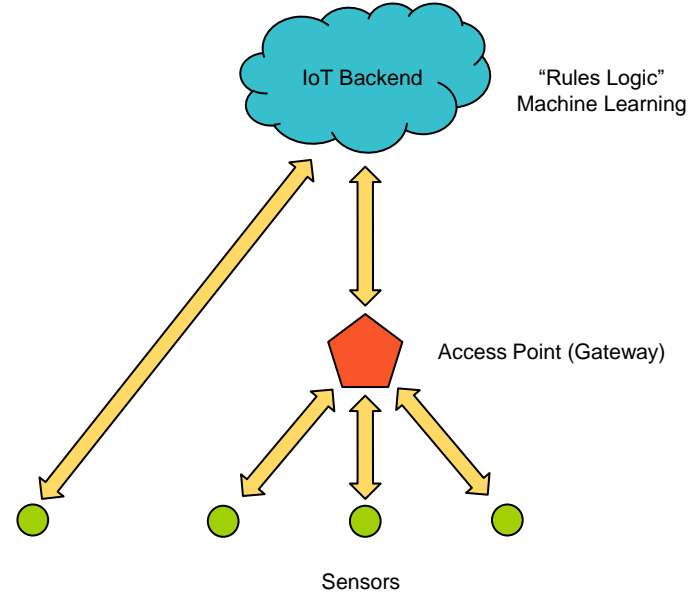
Agenda

- Background on the “State of the IoT” and Embedded Machine Learning
- Introduction to Edge Impulse
- Edge Impulse Collaboration with Nordic
- Demo
- Q&A

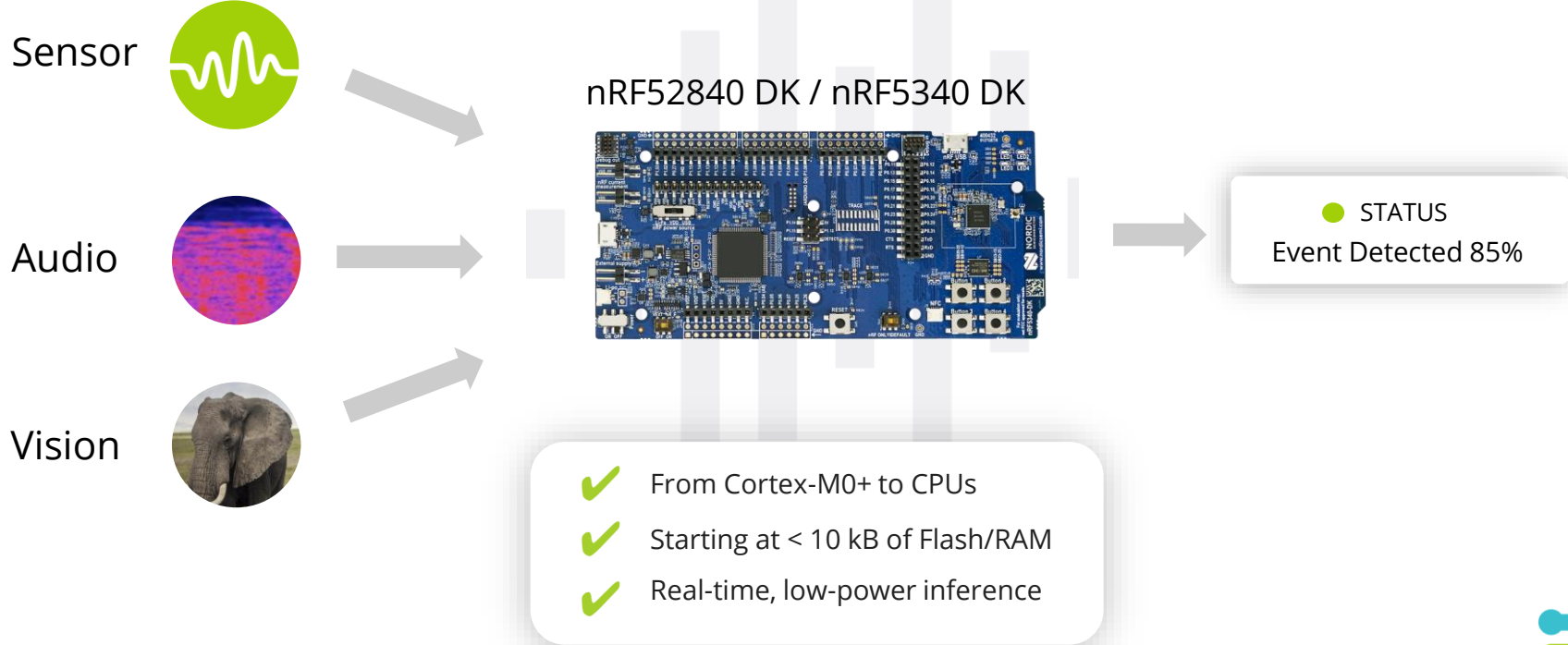


"State of the IoT"

- Measurement samples are typically continuously sent to the cloud or gateway where:
 - Analysis is performed to gain insights (rules logic)
- This traditional technique runs into challenges when:
 - System's cloud connection is bandwidth constrained
 - Sensors are power consumption constrained
 - System latency is introduced due to compute constraints

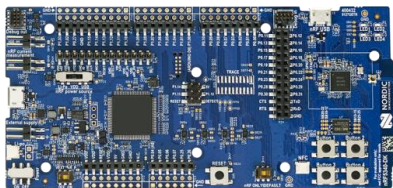
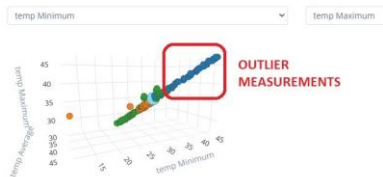


Embedded Machine Learning Makes Devices and Systems Smarter



Harness On-device Intelligence to Detect Anomalies

Temperature
varies in a way
that I've never
seen before

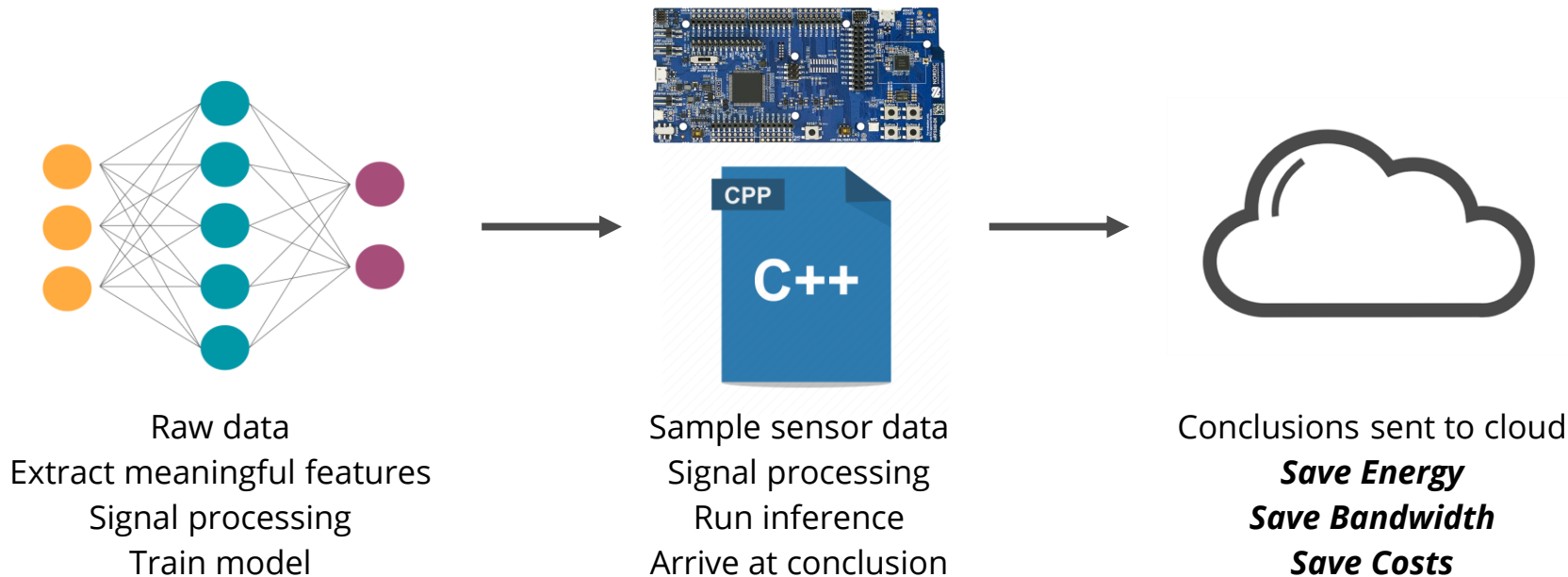


Vibration
pattern heard
that will lead
to fault state in
a week

Machine oscillates
differently than all
other machines in
the factory



From Model to Device to Cloud



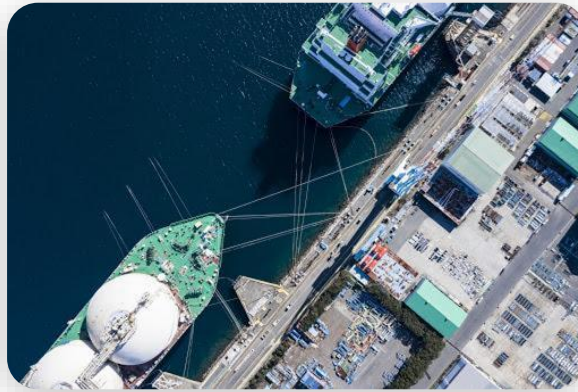
Predictive Maintenance



Motion, current, audio and camera

- Industrial
- White Goods
- Smart City
- Automotive

Asset Tracking & Monitoring



Motion, temp/humidity, position, audio and camera

- Logistics
- Smart City
- Smart Spaces
- Cold Chain

Human & Animal Sensing



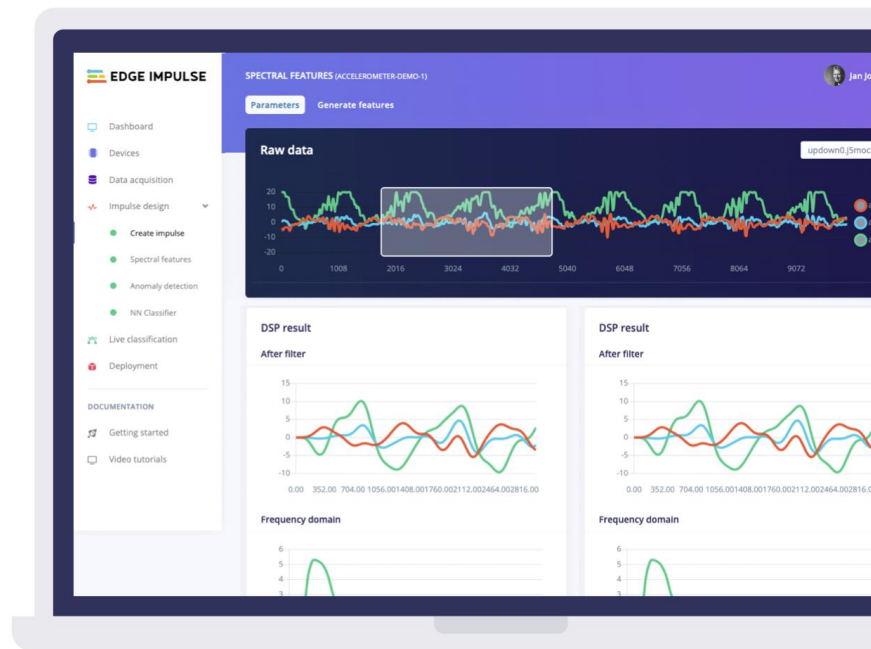
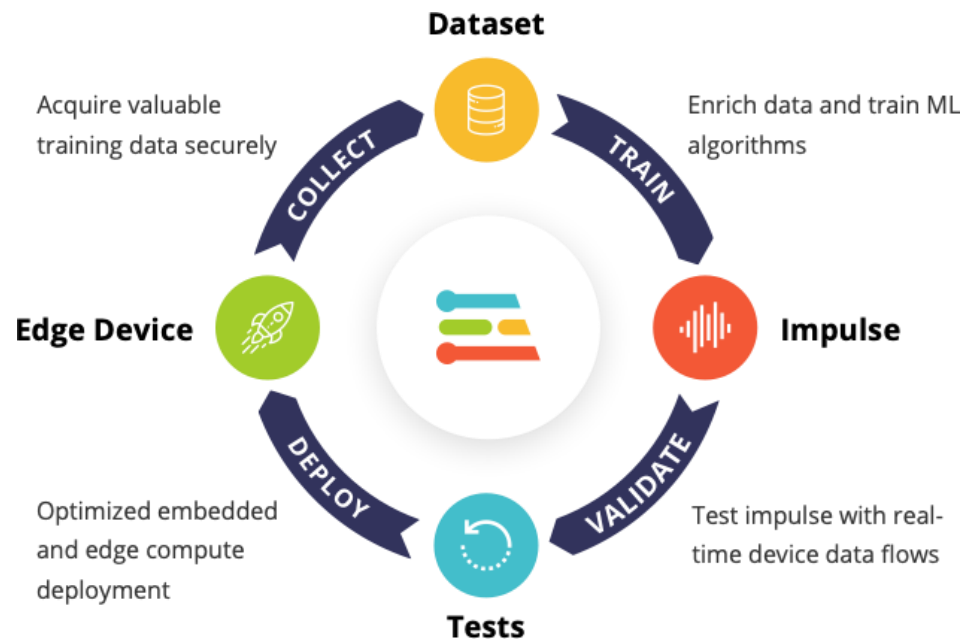
Motion, radar, audio, PPG, ECG

- Health
- Consumer
- Industrial
- Wildlife Conservation



Edge Impulse

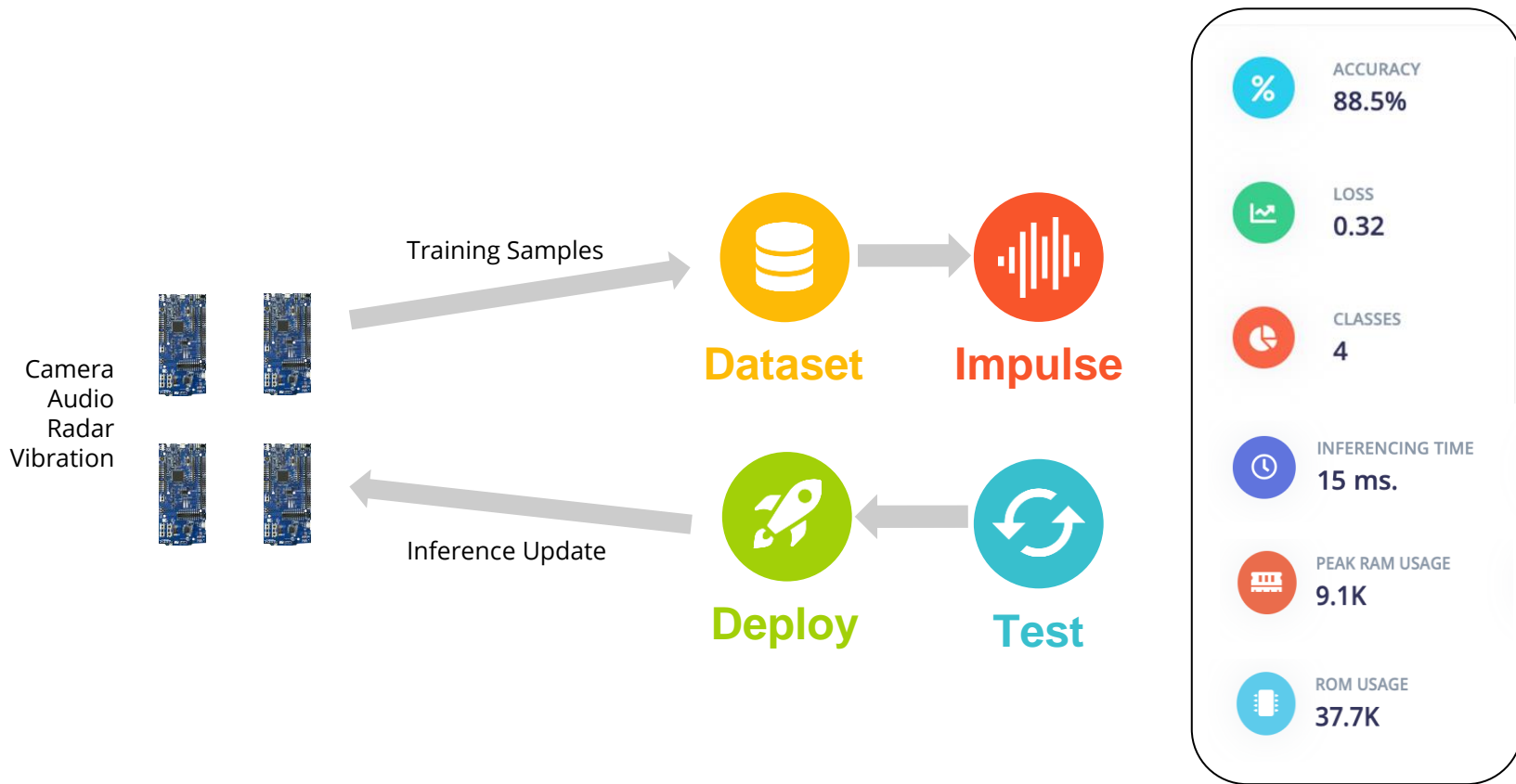
The Embedded ML Development Platform



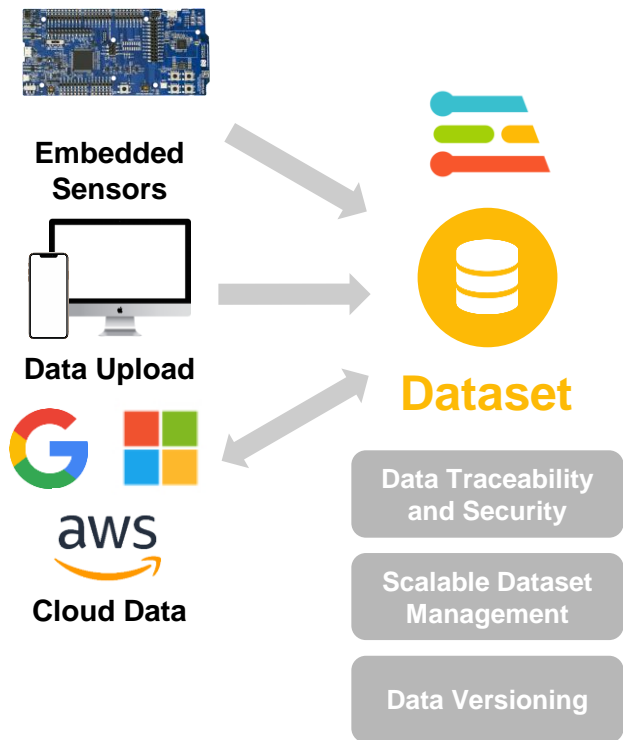
Learn more at <http://edgeimpulse.com>



Manage your Entire Embedded ML Pipeline with Edge Impulse



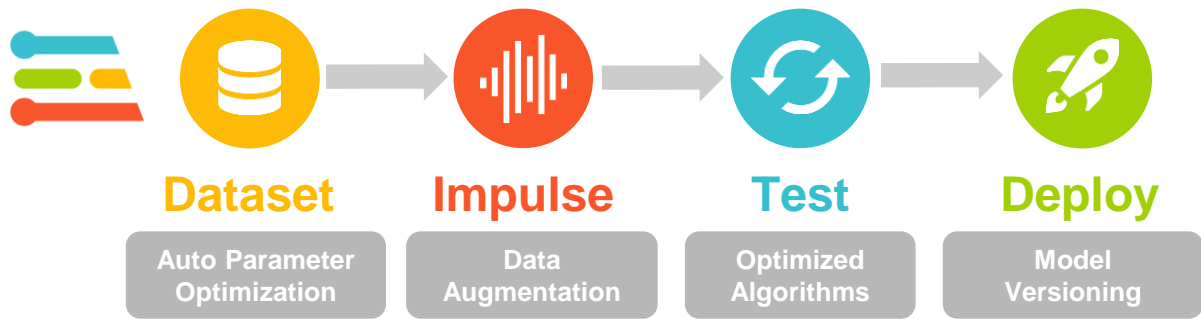
Many Ways to Ingest Data Sets Securely into Edge Impulse



- Most sensor data is discarded today or not compatible with ML use
- Collecting datasets early, often and with ML and security in mind to unlock value from ML
- Edge Impulse saves time and engineering resources by enabling easy, efficient and secure data collection from any source



Enable Enterprise Collaboration with Embedded MLOps



25-55% Smaller

The Edge Impulse Edge Optimized Neural (EON)[™] Compiler technology reduces the size of ML output by 25-55% compared to TensorFlow Lite Micro.

- Enable your team to innovate with ML, gaining a competitive advantage with advanced tools and algorithms optimized specifically for embedded devices
- Get to market on time, saving man-years of platform development and enabling continuous management and updates with Edge Impulse end-to-end MLOps



A decorative graphic on the left side of the slide, consisting of numerous white-outlined rectangles of various sizes and orientations. These rectangles are densely packed on the left and gradually become more sparse as they move towards the right, creating a sense of depth and movement.

Case Studies

Making Health Smarter with ML

Leading wearable health device maker goes big on innovation with Edge Impulse



OUTCOMES

- ✓ Enabled leading new sleep and flu detection algorithms
- ✓ Saved man-years in time and improved team collaboration
- ✓ Accelerated algorithm development from years to months

Making the Grid Smarter with ML

Electric grid solution to enable fault detection in real time with Edge Impulse

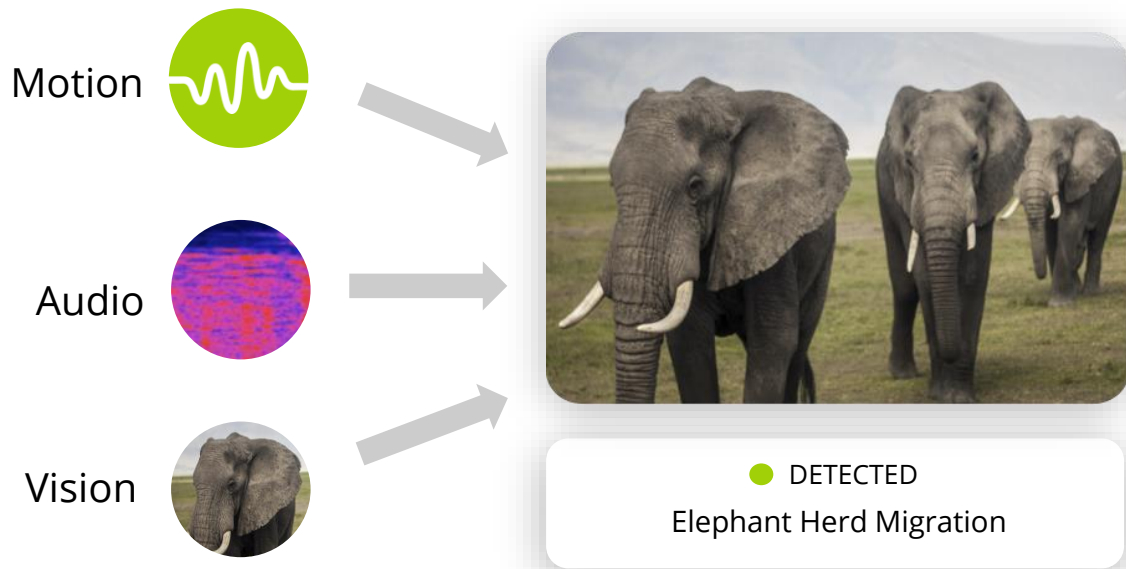


OUTCOMES

- ✓ Enable automated monitoring of poles and lines
- ✓ NB-IoT with 10 year battery life made possible by ML
- ✓ Avoid disastrous wildfires and reduce maintenance costs

Making Conservation Smarter with ML

ElephantEdge initiative enables advanced wildlife monitoring with Edge Impulse



OUTCOMES

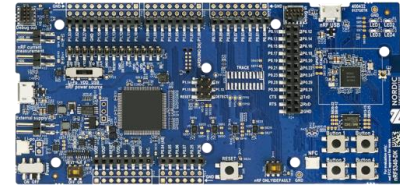
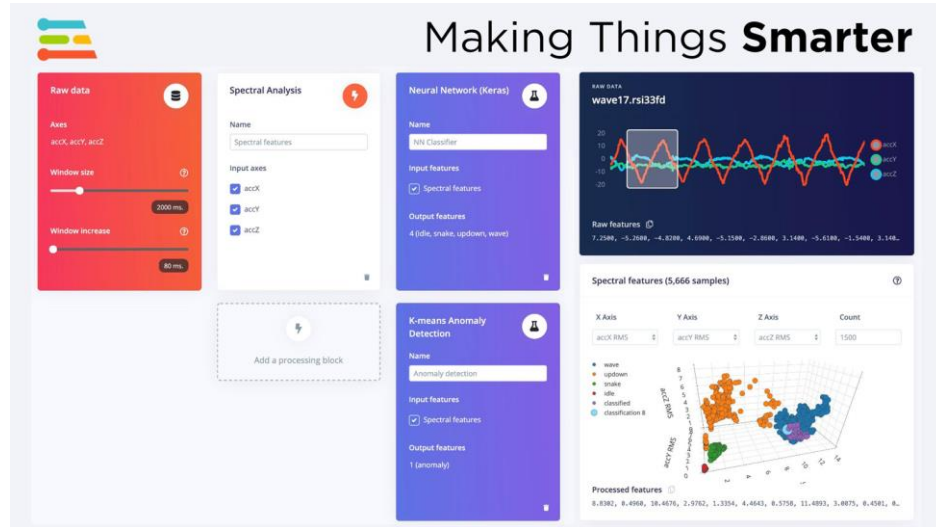
- ✓ Monitor and reduce poaching and human conflict risk
- ✓ Better understand elephant and herd behaviour
- ✓ Monitor the activities of elephants to better protect them

An abstract graphic consisting of numerous white-outlined rectangles of varying sizes and orientations, scattered across the left side of a teal background. The rectangles are more densely packed on the left and become sparser towards the right.

Edge Impulse Collaboration with Nordic



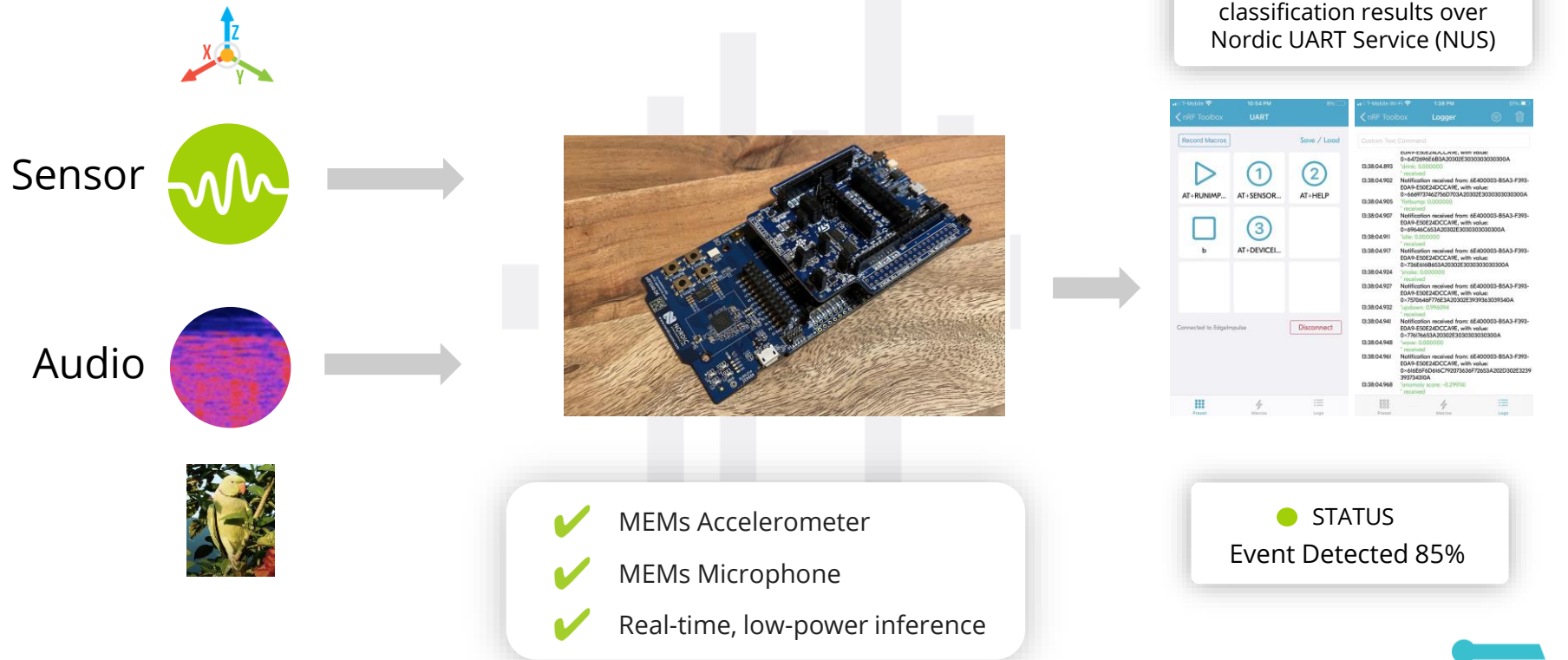
Edge Impulse Collaboration with Nordic



- Fully supported standalone inferencing example projects that run on **nRF52840 DK** and **nRF5340 DK** and are based on the **nRF Connect SDK (Zephyr-based)**
 - Use these with the Edge Impulse Data Forwarder tool (<https://docs.edgeimpulse.com/docs/cli-data-forwarder>) to acquire datasets, train and deploy models
- Train your models in the Edge Impulse studio, then build downloadable binary images that uses the MEMs microphone and MEMs accelerometer on the X-NUCLEO-IKS02A1 Shield



Demo: nRF52840 DK/nRF5340 DK + X-NUCLEO-IKS02A1 Shield



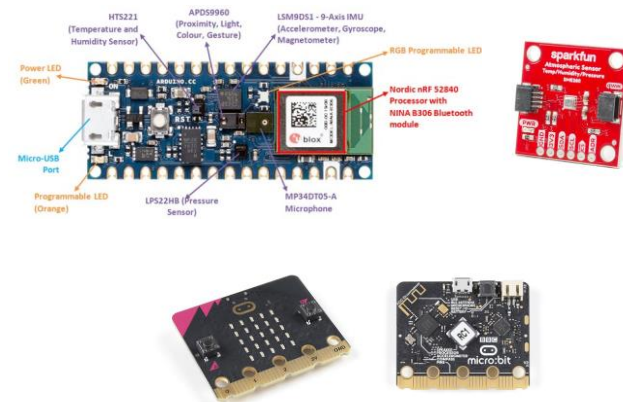
How to Get Started

- Sign-up for free at <https://edgeimpulse.com>
- Getting Started Tutorials, Example Projects:
 - <https://docs.edgeimpulse.com/docs/nordic-semi-nrf52840-dk>
 - <https://docs.edgeimpulse.com/docs/nordic-semi-nrf5340-dk>
 - https://developer.nordicsemi.com/nRF_Connect_SDK/doc/latest/nrf/ug_edge_impulse.html#
 - https://developer.nordicsemi.com/nRF_Connect_SDK/doc/latest/nrf/samples/ei_data_forwarder/README.html



Additional Resources

- Introduction to Embedded Machine Learning Coursera class:
<https://www.coursera.org/learn/introduction-to-embedded-machine-learning>
- Many other sensors you can try on Arduino Nano 33 BLE Sense (and external sensors like BME280 - temp/pressure/humidity)
- Using the data forwarder you can acquire data via UART on any Nordic-based device
- micro:bit v2 (nRF52833):
<https://www.edgeimpulse.com/blog/voice-activated-microbit>
- Edge Impulse + Nordic BLE NUS Example:
<https://github.com/IRNAS/firmware-nordic-nrf52840dk-ble-nus>





EDGE IMPULSE

A world-class team of industry leaders and embedded experts, **delivering the ultimate developer experience for embedded machine learning solutions, at scale.**

8,000 +
Developers

World's largest Embedded
Machine Learning
Community 136 countries!

13,000 +
Projects

Using Edge Impulse Studio
across more than **1,000**
Enterprises

> 9.5 Million
Dataset samples

Labeled real-world data
samples across more than
9K connected devices



Register for upcoming Nordic Tech Webinars

www.nordicsemi.com/webinars