

Visual Studio Code

Editing evolved

Start

- New File...
- Open File...
- Open Folder...
- Connect to...
- New Workspace with Copilot...

Recent

blinky_zephyr C:\Users\luxto\NORDIC\Samples
workspace (Workspace) C:\Users\luxto

Walkthroughs


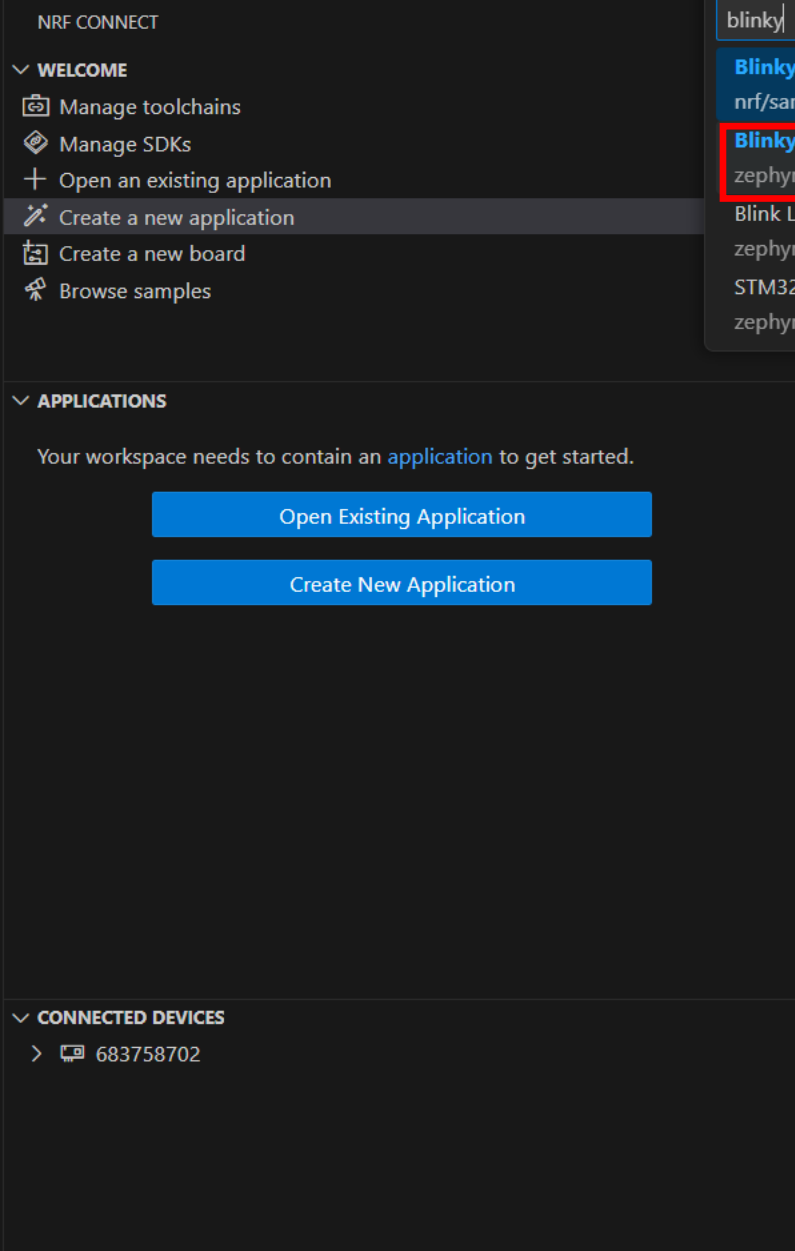
- Get started with VS Code
Customize your editor, learn the basics, and start coding
- Get Started with C++ Development **New**
- Get Started with the nRF Connect SDK **New**
- Learn the Fundamentals

NOTIFICATIONS

- Successfully installed nRF Connect SDK v3.0.2.
- Successfully installed toolchain v3.0.2.

Hide Notifications

☒ Show welcome page



Blinky Sample
nrf/samples/zephyr/basic/**blinky**

Blinky Sample
zephyr/samples/basic/**blinky**

Blink LED (PWM based)
zephyr/samples/basic/**blinky_pwm**

STM32 GPIO Power Management
zephyr/samples/boards/st/power_mgmt/**blinky**

Recent

```
l1_e2 C:\myfw\ncsfund
blinky C:\nordicws\samples
l1_e2 C:\myfw\ncsfund
blinky_zephyr C:\Users\luxto\NORDIC\Sa...
workspace (Workspace) C:\Users\luxto
```

☒ Show welcome page on startup


PROBLEMS OUTPUT DEBUG CONSOLE TERMINAL PORTS

```
PS C:\Users\luxto>
```

```
Code
learn the
]
```

Get Started with C++... New

 [Get Started with the ...](#) [New](#)


 Learn the Fundamentals

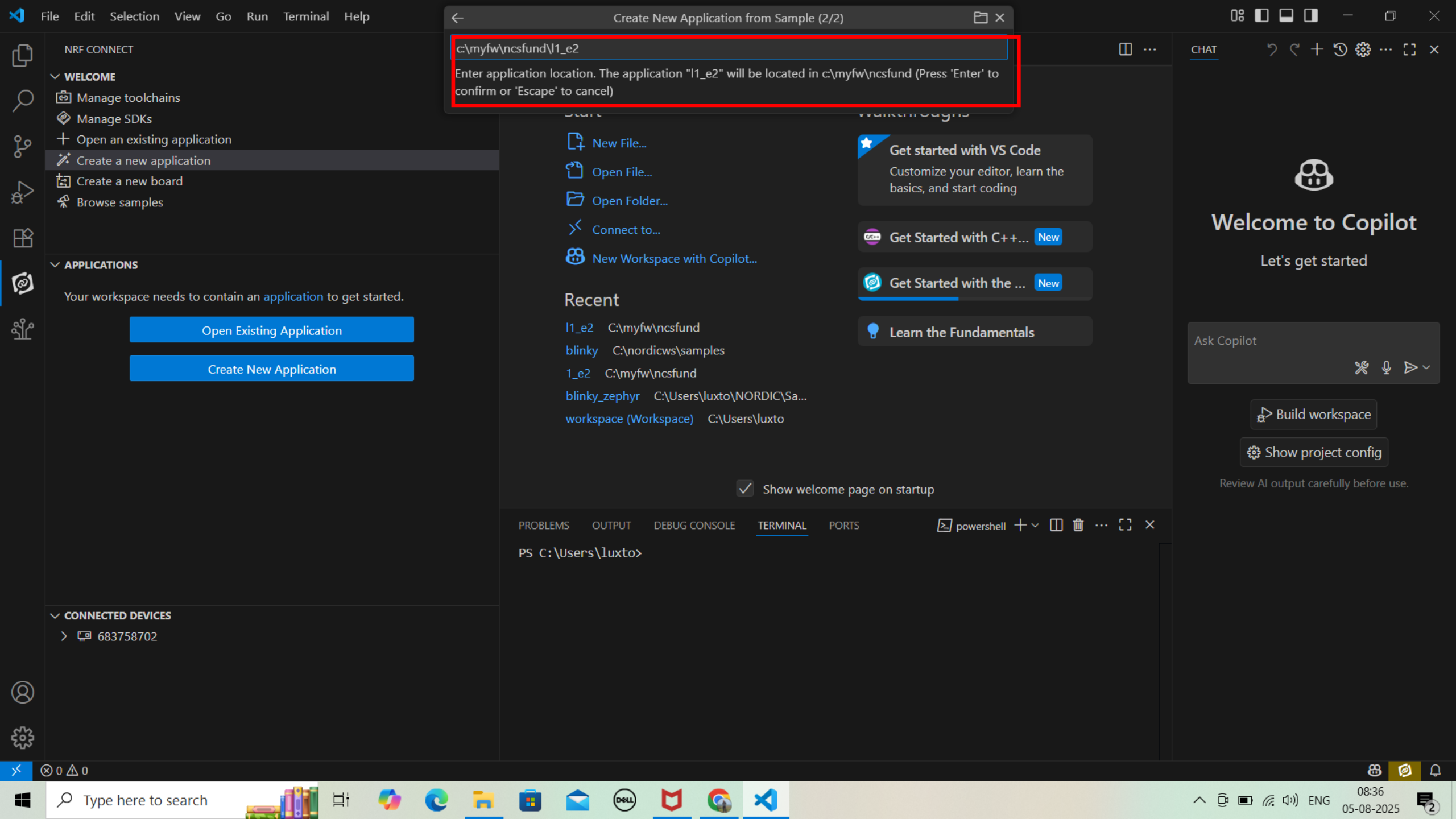
CHAT

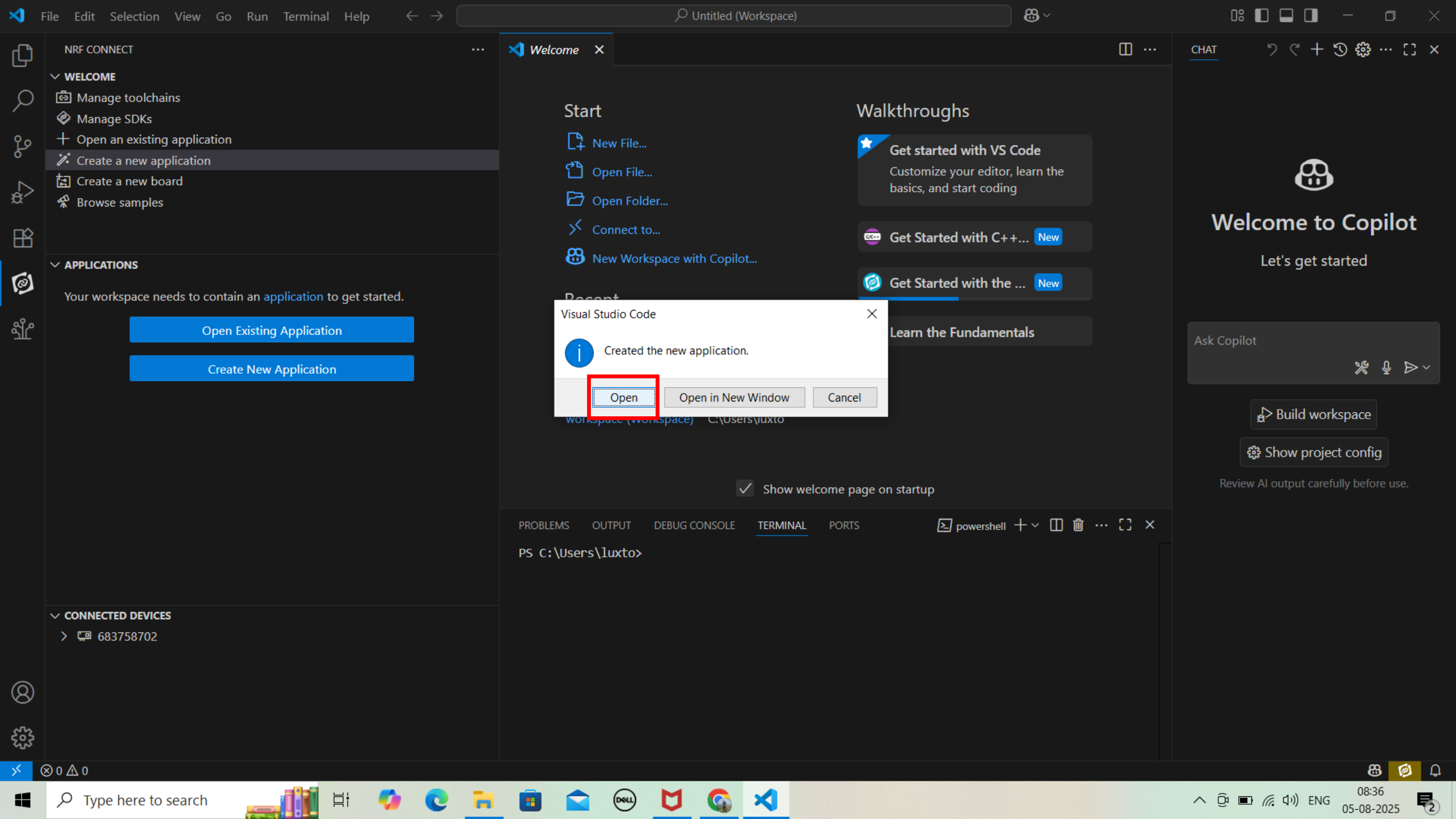


Welcome to Copilot

Let's get started

 Build workspace Show project config

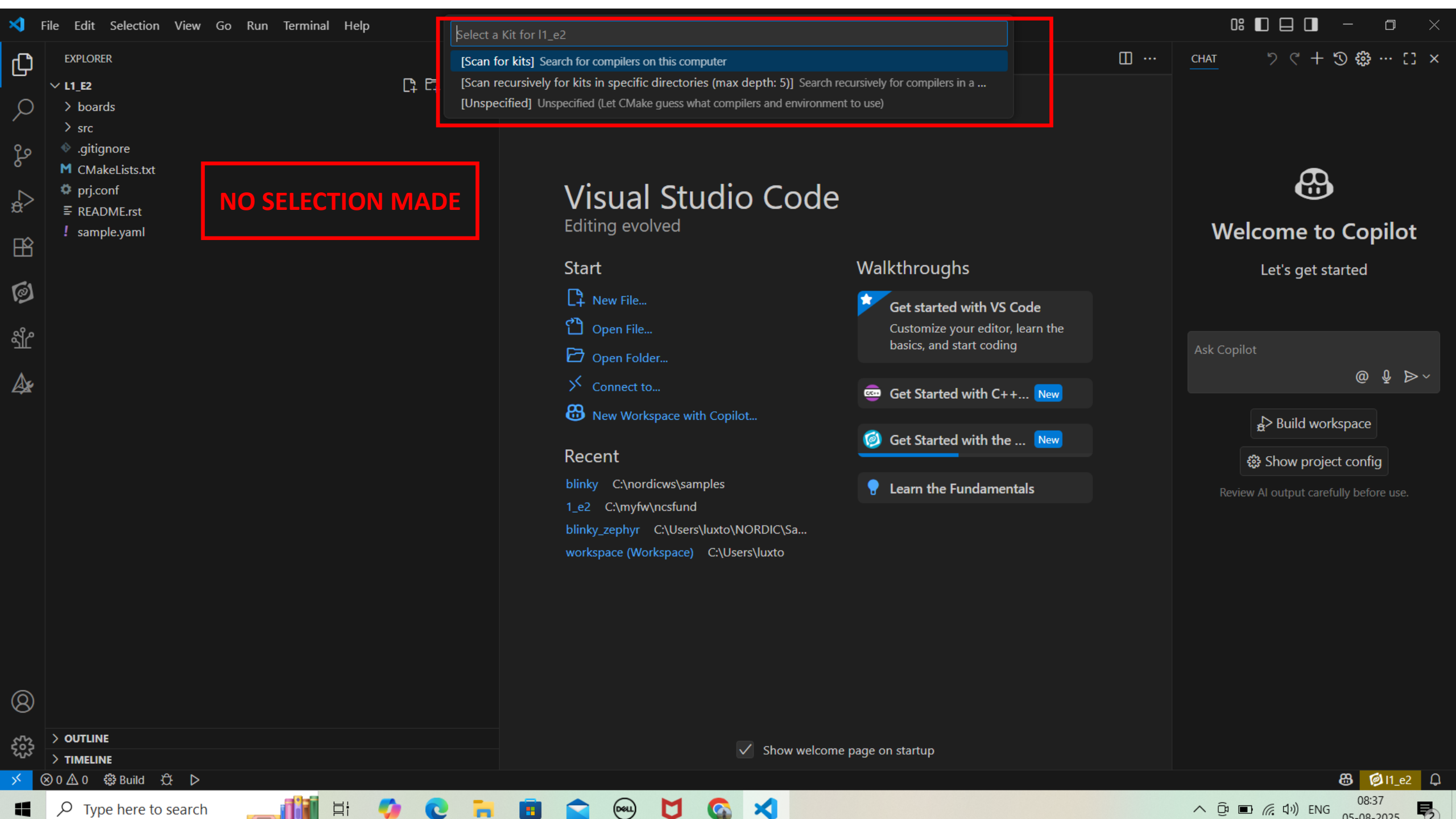




Visual Studio Code

Created the new application.

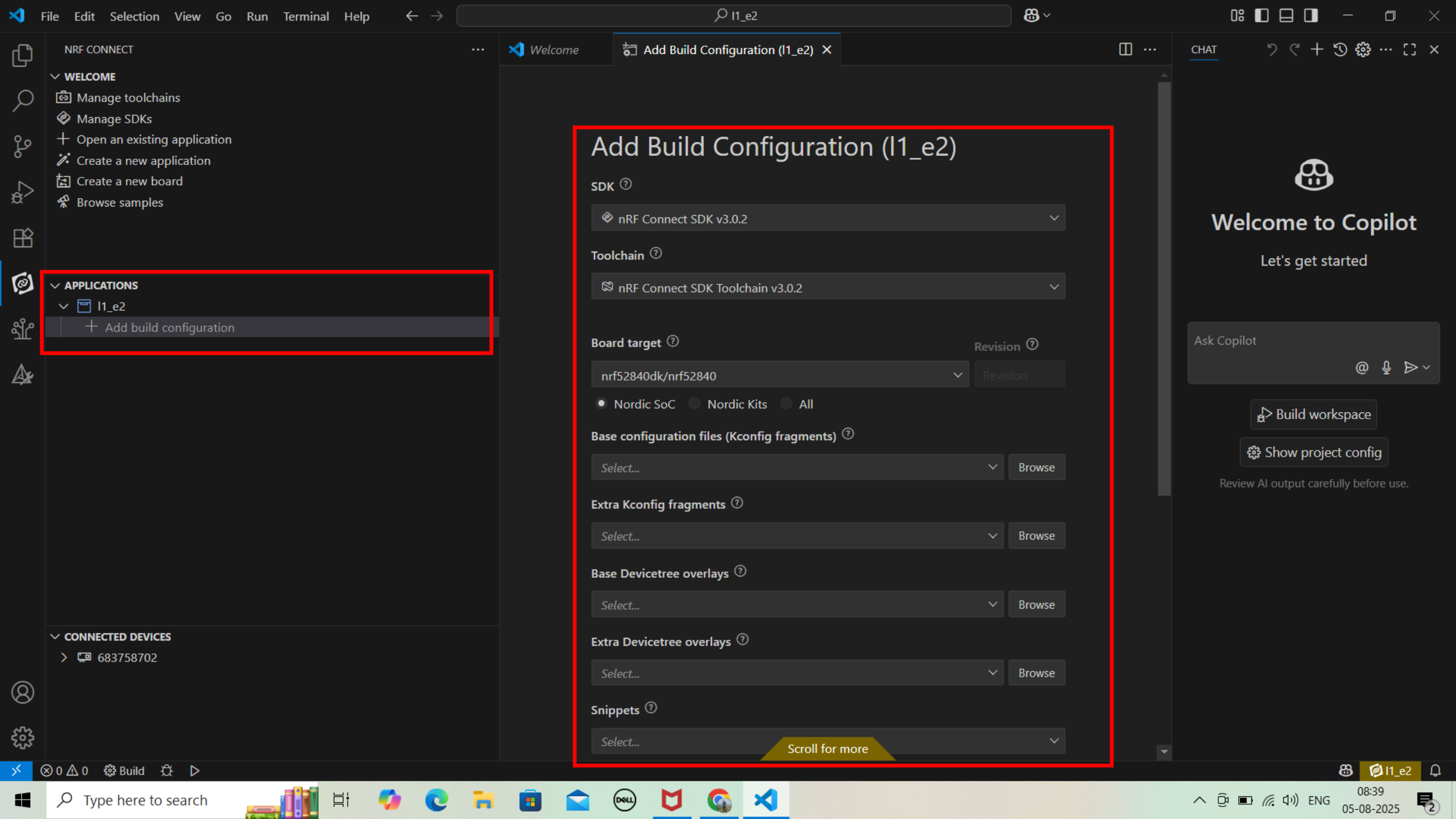
Open Open in New Window Cancel

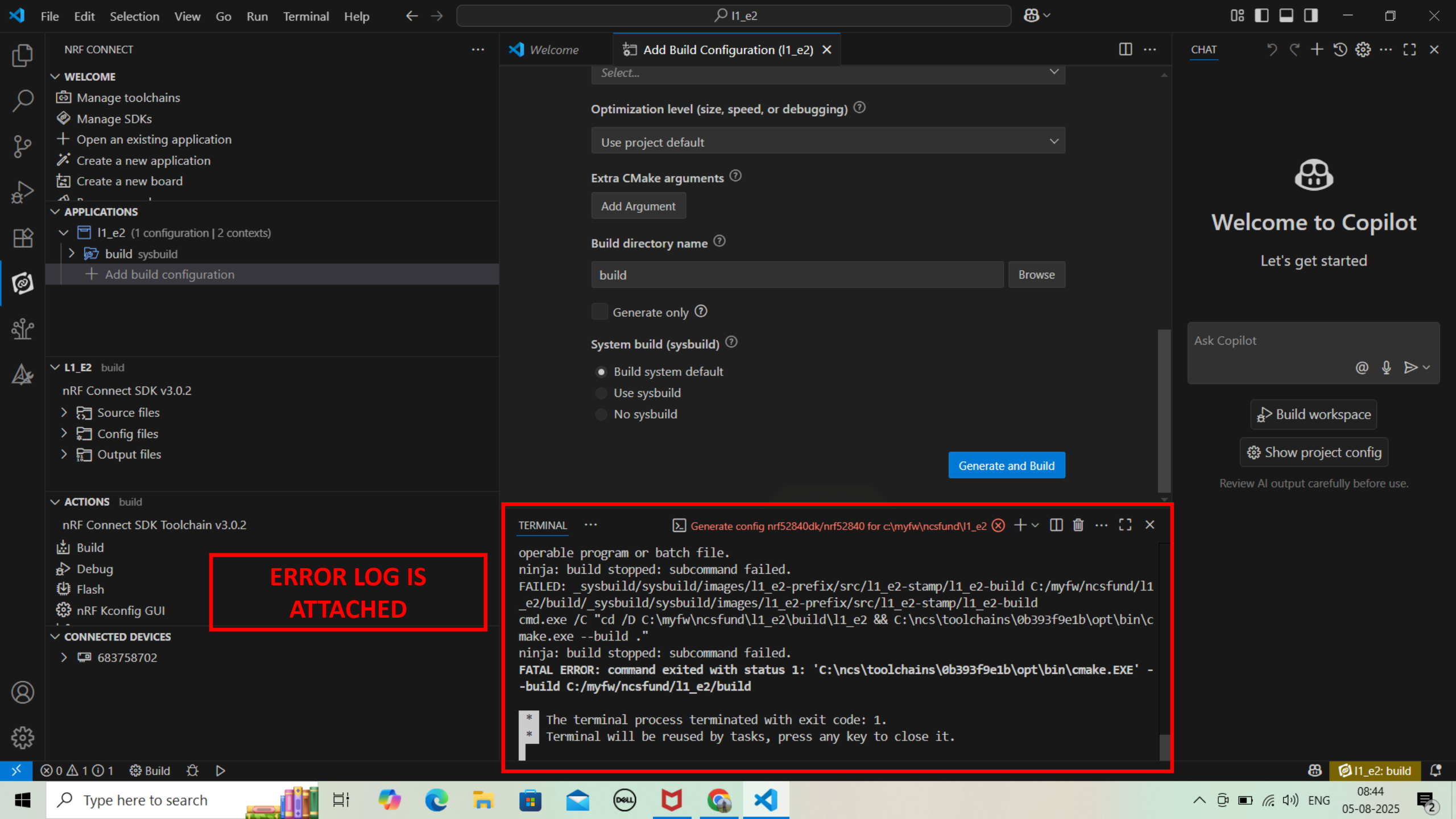


NO SELECTION MADE

Select a Kit for l1_e2

- [Scan for kits] Search for compilers on this computer
- [Scan recursively for kits in specific directories (max depth: 5)] Search recursively for compilers in a ...
- [Unspecified] Unspecified (Let CMake guess what compilers and environment to use)

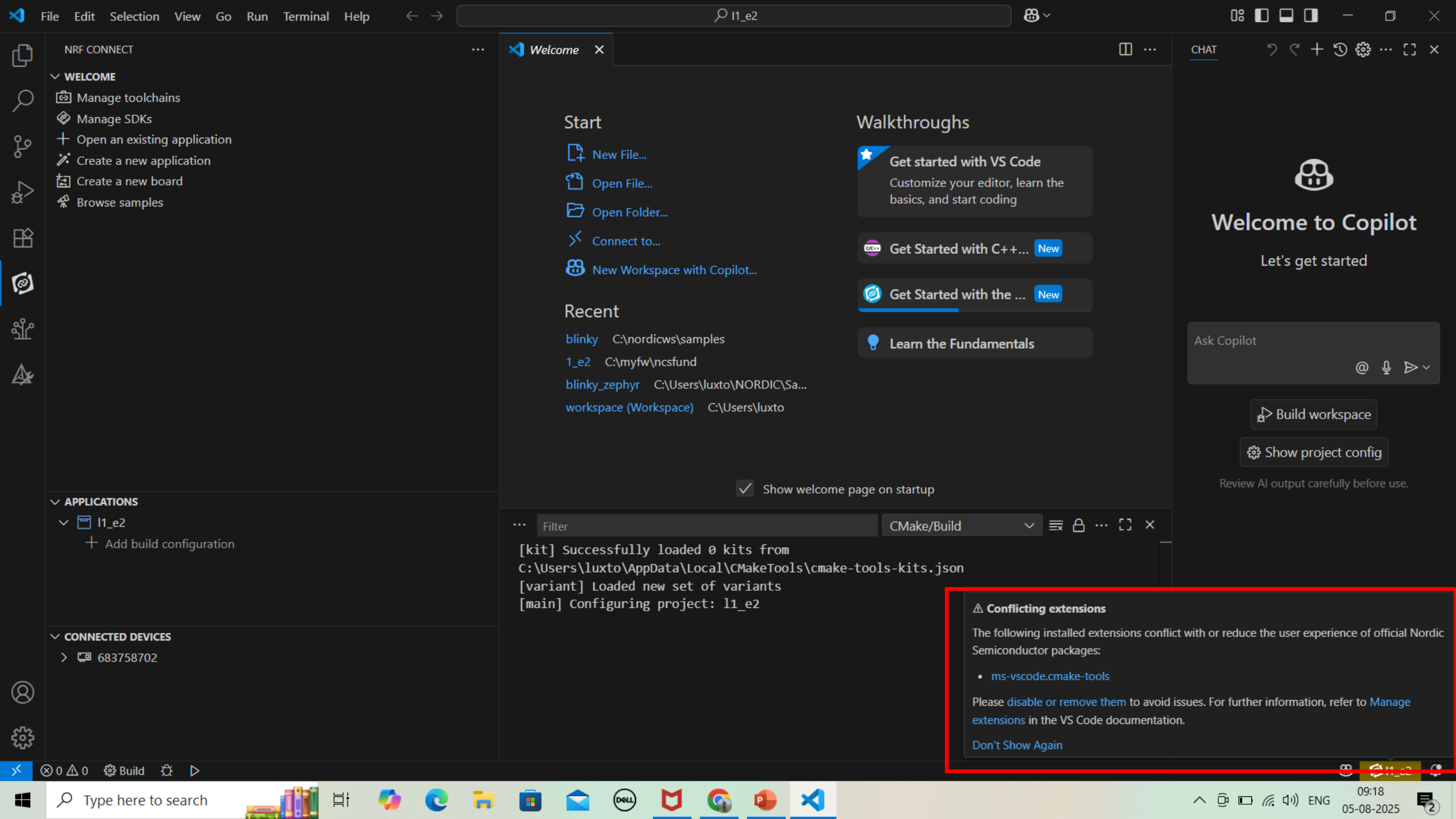




**ERROR LOG IS
ATTACHED**

```
TERMINAL ... Generate config nrf52840dk/nrf52840 for c:\myfw\ncsfund\l1_e2
operable program or batch file.
ninja: build stopped: subcommand failed.
FAILED: _sysbuild/sysbuild/images/l1_e2-prefix/src/l1_e2-stamp/l1_e2-build C:/myfw/ncsfund/l1_e2/build/_sysbuild/sysbuild/images/l1_e2-prefix/src/l1_e2-stamp/l1_e2-build
cmd.exe /C "cd /D C:/myfw/ncsfund/l1_e2/build/l1_e2 && C:/ncs/toolchains/0b393f9e1b/opt/bin/cmake.exe --build ."
ninja: build stopped: subcommand failed.
FATAL ERROR: command exited with status 1: 'C:/ncs/toolchains/0b393f9e1b/opt/bin/cmake.EXE' - -build C:/myfw/ncsfund/l1_e2/build

* The terminal process terminated with exit code: 1.
* Terminal will be reused by tasks, press any key to close it.
```



Start

- New File...
- Open File...
- Open Folder...
- Connect to...
- New Workspace with Copilot...

Recent

blinky C:\nordicws\samples
1_e2 C:\myfw\ncsfund
blinky_zephyr C:\Users\luxto\NORDIC\Sa...
workspace (Workspace) C:\Users\luxto

☒ Show welcome page on startup

Filter CMake/Build

```
[kit] Successfully loaded 0 kits from  
C:\Users\luxto\AppData\Local\CMakeTools\cmake-tools-kits.json  
[variant] Loaded new set of variants  
[main] Configuring project: l1_e2
```

⚠ Conflicting extensions

The following installed extensions conflict with or reduce the user experience of official Nordic Semiconductor packages:

- ms-vscode.cmake-tools

Please [disable](#) or [remove](#) them to avoid issues. For further information, refer to [Manage extensions](#) in the VS Code documentation.

[Don't Show Again](#)

