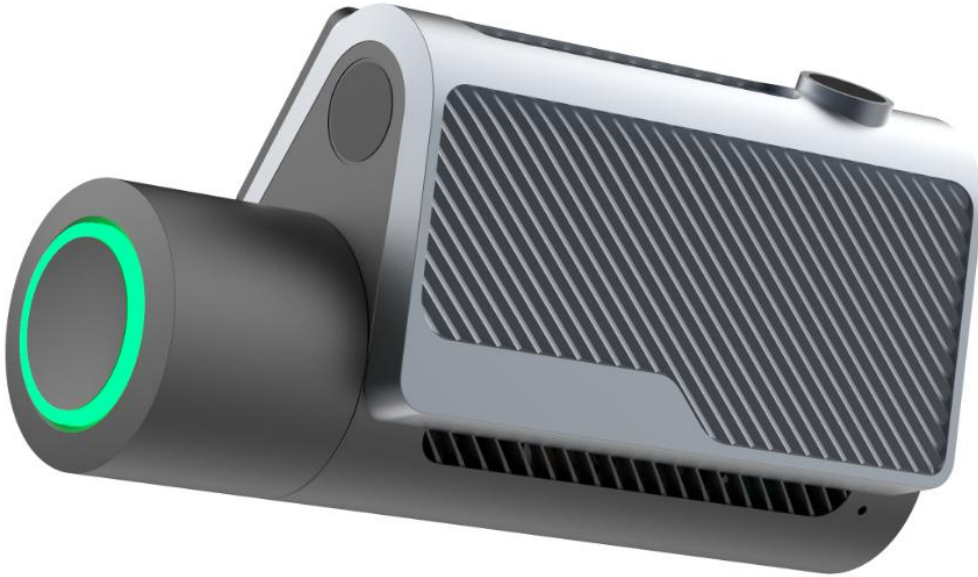


4G+4K Dash Cam

Factory Model: iSV-D10/ iSV-D10Plus

Samsonix Model: R856 / R857



Main Features:

- * 4G / 4K Cloud Dash Cam / Dual Channels**
- * H.265 / 4G Module + SONY IMX415 Sensor**
- * 4K + 1080P, 25Fps / WDR / Super Night Vision**
- * Remote Live Video / GPS Tracking / DVR**
- * Remote Playback / Support App & PC Platform**

- * Support SOS Alarm / Parking Monitoring**
- * Support Vibration Alarm / Anti-theft Alarm**
- * Support Geofence Alarm / Over-speed Alarm**

-
- ① 4G & WiFi Connection, 4K (3840x2160) Resolution
 - ② 4G Module, A53 1.0GHz(Dual Core) IPU, Linux4.19 System
 - ③ Sony IMX415 Sensor, 8.0Mega Pixels
 - ④ H.265, 4K+1080P Dual Channel, 30Fps, MP4
 - ⑤ WDR, Super Night Vision, with G-Sensor
 - ⑥ Maximum Support 512GB SD Card
 - ⑦ 4G+WiFi, Live Video Remotely by App or PC Platform
 - ⑧ Ultra wide 158° View Angle captures more of the road around you
 - ⑨ Enjoy Free GPS Tracking Services
 - ⑩ Support Parking Monitor, Support Time-Lapse Record
 - ⑪ Support Low Battery Protection
 - ⑫ SOS Alarm, Anti-Theft Alarm, Geofence Alarm, Over-speed Alarm

Specification:

Model		iSV-D10/ iSV-D10Plus
Hardware	4G Module	L509 (Europe Version)
	IPU	Dual Core A53-1.2GHz AX630C
	Sensor	Sony IMX415 Sensor / 8.0Mega Pixels, WDR, Super Night Vision
	OS	Linux4.19 System
	RAM	LPDDR4 1GB RAM
	IPS Screen Size	No
Network / Data	LTE UE-Category	Cat.4
	4G / LTE-FDD	B1/B3/B5/B7/B8/B20/B28 (See below)
	4G / LTE-TDD	B38/B40/B41 (See below)
	WCDMA(3G)	B1/B5/B8
	Data Service	LTE, WCDMA, HSDPA, HSUPA
	GPS Location	GPS, A-GPS, BeiDou
	Wi-Fi	2400~2483.5MHz, 18.5dBm, FHSS,GFSK, DBPSK, DQPSK.
Main Functions	DVR	H.265, 4K(Front)+1080P(Rear) with 25fps, Loop-Recording
	WDR	Support
	Super Night Vision	Support
	GPS Tracking	Support, App & PC Platform
	G-Sensor	Support
	Remote Monitoring	App & PC Platform, Remote Video and Remote Picture
	Playback	Support App playback with WiFi and Remotely
	Live Streaming Video	Front-Car/Rear-Car Live Streaming Video Via APP or PC Platform
	Cameras	Front Camera: UHD 4K, Adjustable viewing angle 155°
		Rear Camera: 1080P, Viewing angle 145°
	Micro SD Card	Support Max 512GB
	Time-Lapse Record	Support, 12H / 24H / 48H Optional
	Low Battery Protection	Support
	Parking Monitoring	Support
	SOS Alarm	Support
	Anti-Theft Alarm	Support
	Geofence Alarm	Support
	Over-speed Alarm	Support
Others	Operating Temperature	-20℃~70℃
	Operating Humidity	0~90%, Non-Condensed
	Dimension(L*W*H)	109(L)*52 (W)*33(H)mm
		Frequency bands: Cellular: GSM 900: 880 – 915 MHz (TX), 925 – 960

MHz (RX)

DCS 1800: 1710 – 1785 MHz (TX), 1805 – 1880 MHz (RX)

WCDMA 2100: 1920 – 1980 MHz (TX), 2110 – 2170 MHz (RX)

WCDMA 900: 880 – 915 MHz (TX), 925 – 960 MHz (RX)

LTE Band 1: 1920 – 1980 MHz (TX), 2110 – 2170 MHz (RX)

LTE Band 3: 1710 – 1785 MHz (TX), 1805 – 1880 MHz (RX)

LTE Band 7: 2500 – 2570 MHz (TX), 2620 – 2690 MHz (RX)

LTE Band 8: 880 – 915 MHz (TX), 925 – 960 MHz (RX)

LTE Band 20: 832 – 862 MHz (TX), 791 – 821 MHz (RX)

LTE Band 28: 703 – 736 MHz (TX), 758 – 791 MHz (RX)

LTE Band 38: 2570 – 2620 MHz (TX), 2570 – 2620 MHz (RX)

LTE Band 40: 2300 – 2400 MHz (TX), 2300 – 2400 MHz (RX)

GNSS (GPS L1

C/A, GLONASS

G1, Galileo E1:):

1559 – 1610 MHz (RX)

Transmit power / power
range:

Cellular: GSM 900: 35.0 dBm, Rated Conducted

DCS 1800: 32.0 dBm, Rated Conducted

WCDMA 2100: 25.0 dBm, Rated Conducted

WCDMA 900: 25.0 dBm, Rated Conducted

LTE Band 1: 25.7 dBm, Rated Conducted

LTE Band 3: 25.7 dBm, Rated Conducted

LTE Band 7: 25.7 dBm, Rated Conducted

LTE Band 8: 25.7 dBm, Rated Conducted

LTE Band 20: 25.7 dBm, Rated Conducted

LTE Band 28: 25.7 dBm, Rated Conducted

LTE Band 38: 25.7 dBm, Rated Conducted

LTE Band 40: 25.7 dBm, Rated Conducted

Type of antenna and gain: Cellular: External Antenna (Not Supplied)

GSM 900:

DCS 1800:

WCDMA 900:

WCDMA 2100:

LTE Band 1:

LTE Band 3:

LTE Band 7:

LTE Band 8:

LTE Band 20:

LTE Band 28:

LTE Band 38:

LTE Band 40:

Gain: ≤ 1 dBi

Gain: ≤ 4 dBi

Gain: ≤ 1 dBi

Gain: ≤ 4 dBi

Gain: ≤ 4 dBi

Gain: ≤ 4 dBi

Gain: ≤ 5 dBi

Gain: ≤ 1 dBi

Gain: ≤ 6 dBi

Gain: ≤ 6 dBi

Gain: ≤ 5 dBi

Gain: ≤ 5 dBi

GNSS: External Antenna (Not Supplied)

Hardware version: V2

Software version: L509LCNv01.03b03.00